



20 Highfield Drive
, Matlock, DE4 3FZ

£290,000



20 Highfield Drive

, Matlock, DE4 3FZ

A well proportioned 2 bedroom detached bungalow offering 871 sqft of bright and spacious living accommodation. The property offers opportunity to cosmetically update and benefits from low maintenance gardens, ample off street parking, single garage and views of Ribber Castle.

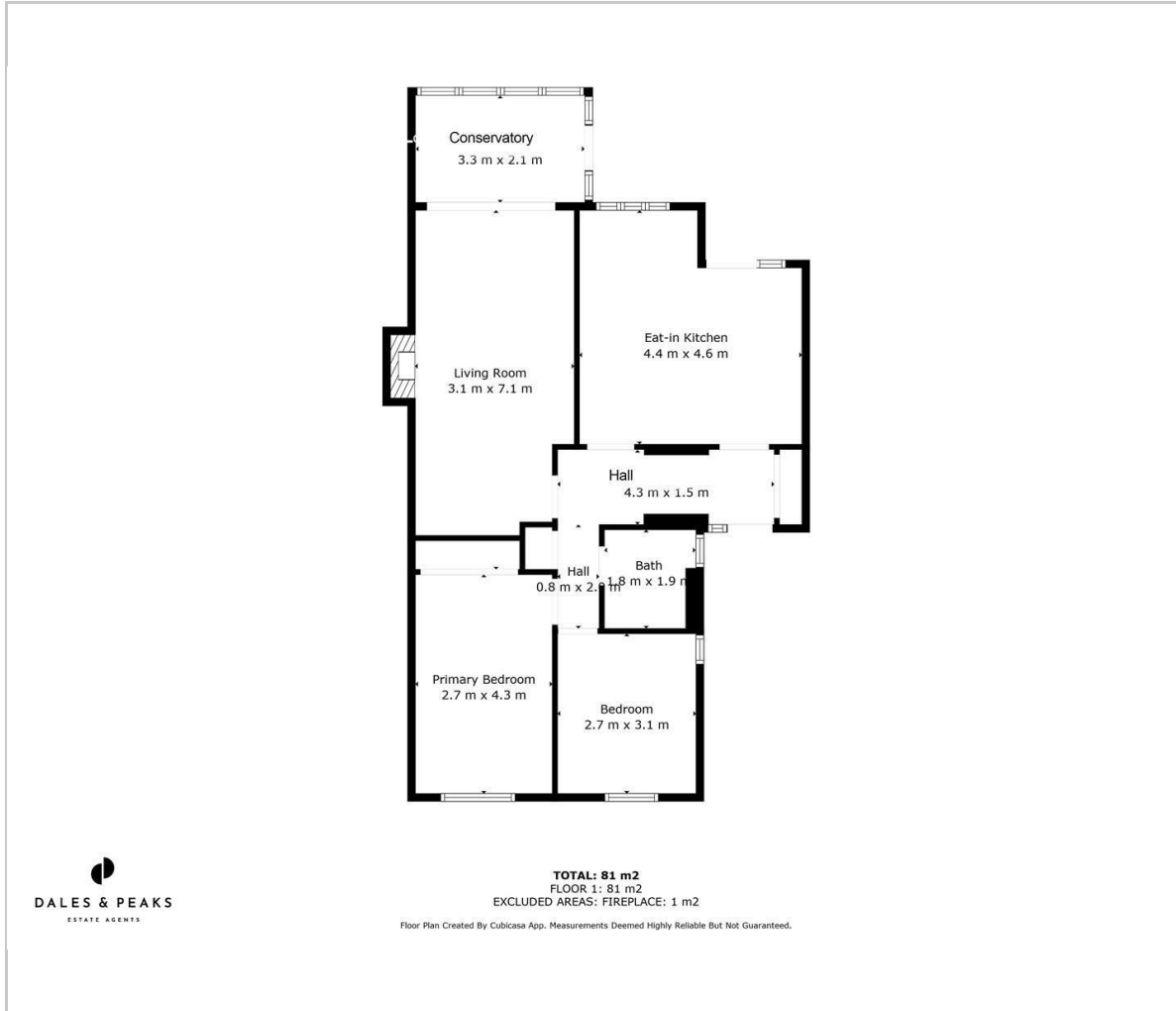
The property features; Entrance hallway, open plan dining kitchen with access onto the rear garden, living room with electric fire and access into the conservatory, two double bedrooms and the main shower room.

Dales and Peaks ForwardMove
- Please read





Floor Plan

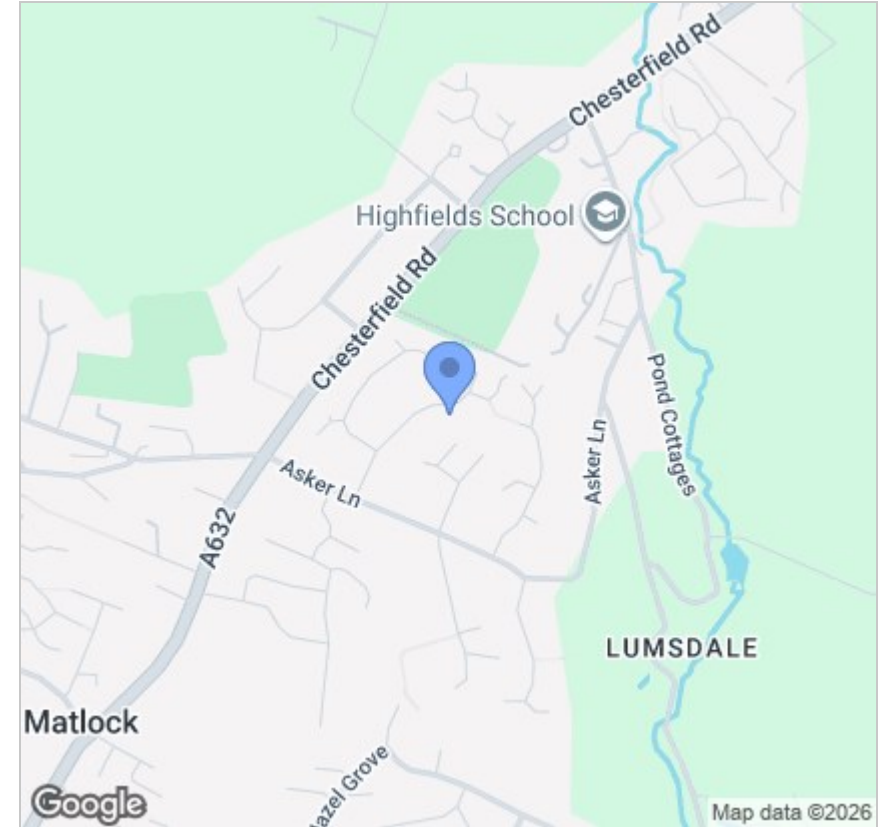


Viewing

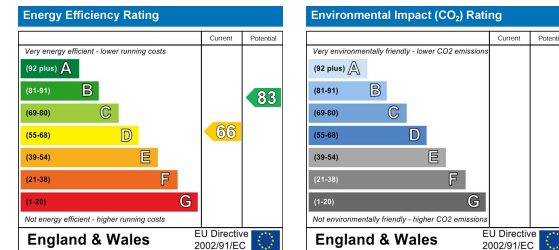
Please contact our Chesterfield Office on 01246 567540 if you wish to arrange a viewing appointment for this property or require further information.

These particulars, whilst believed to be accurate are set out as a general outline only for guidance and do not constitute any part of an offer or contract. Intending purchasers should not rely on them as statements of representation of fact, but must satisfy themselves by inspection or otherwise as to their accuracy. No person in this firm's employment has the authority to make or give any representation or warranty in respect of the property.

Area Map



Energy Efficiency Graph



131 Chatsworth Road, Chesterfield, Derbyshire, S40 2AP
 T: 01246 567540



E: info@dalesandpeaks.co.uk
 www.dalesandpeaks.co.uk