



jordan fishwick

WEST DIDSBURY
Cavendish Road



The Property

A magnificent, FIVE BEDROOM Victorian end terrace property having undergone a MAJOR TRANSFORMATION in recent years, including a SIDE EXTENSION and DORMER LOFT CONVERSION, now offering BEAUTIFULLY PRESENTED living space over three floors, in all approaching nearly 2,000 sq ft.

A generous entrance hall leads to the front lounge with wood floor, bespoke fitted units and Plantation shutters, whilst a Fire rated glass partition and double doors open to the most impressive open plan living area with a bespoke fitted kitchen, hand painted units and quartz work surfaces, large matching island, a range of integrated appliances and features including a full height fridge & freezer, 4 way tap (boiling/filtered/ hot & cold), a rising extractor fan, and a large larder cupboard. In addition, there is underfloor heating, ceiling speakers, an 'opti-myst' fireplace and additional fitted furniture with storage options. An excellent utility room and separate WC complete the ground floor.

At first floor level are three double bedrooms, with fitted wardrobes to the two main bedrooms, and the family bathroom, whilst the professional dormer loft conversion provides a further double bedroom with excellent eaves storage space, a further bedroom/office, a luxury tiled shower room and separate generous walk-in storage cupboard.

To the front, a newly installed block paved driveway provides parking whilst to the rear is a landscaped and easy to maintain walled garden with corner patio area.

Directions

M20 1QF



Cavendish Road, West Didsbury, M20 1QF

Offers Over £750,000



- Superb five bedroom end terrace
- Extended & remodelled in recent years
- Professional dormer loft conversion
- Open plan living kitchen with hand painted units
- Two luxury bathrooms
- Useful utility room & downstairs WC
- Cleverly designed fitted furniture with storage options
- Block paved driveway
- Landscaped walled rear garden
- Ideal location in West Didsbury

Postcode - M20 1QF

EPC Rating - C

Floor Area - 1827.00 sq ft

Local Authority - Manchester City Council

Council Tax - C



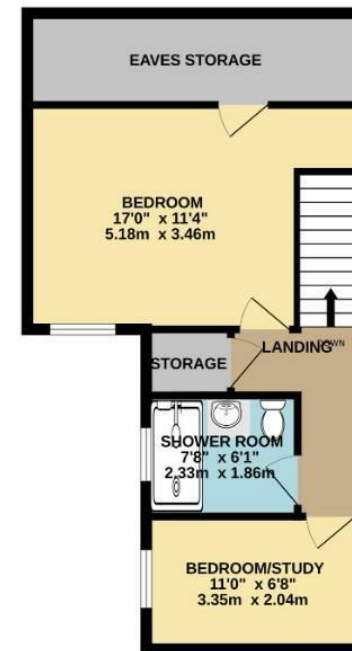
GROUND FLOOR
824 sq.ft. (76.5 sq.m.) approx.



1ST FLOOR
554 sq.ft. (51.5 sq.m.) approx.



2ND FLOOR
449 sq.ft. (41.7 sq.m.) approx.



TOTAL FLOOR AREA : 1827 sq.ft. (169.7 sq.m.) approx.
Measurements are approximate. Not to scale. Illustrative purposes only
Made with Metropix ©2026



These particulars are believed to be accurate but they are not guaranteed and do not form a contract. Neither Jordan Fishwick nor the vendor or lessor accept any responsibility in respect of these particulars, which are not intended to be statements or representations of fact and any intending purchaser or lessee must satisfy himself by inspection or otherwise as to the correctness of each of the statements contained in these particulars. Any floorplans on this brochure are for illustrative purposes only and are not necessarily to scale.

Offices also at: Wilmslow, Macclesfield, Hale, Sale, Chorlton, Glossop, Manchester & Salford

757-759 Wilmslow Road, Didsbury Village, Manchester

0161 445 4480

didsbury@jordanfishwick.co.uk
www.jordanfishwick.co.uk