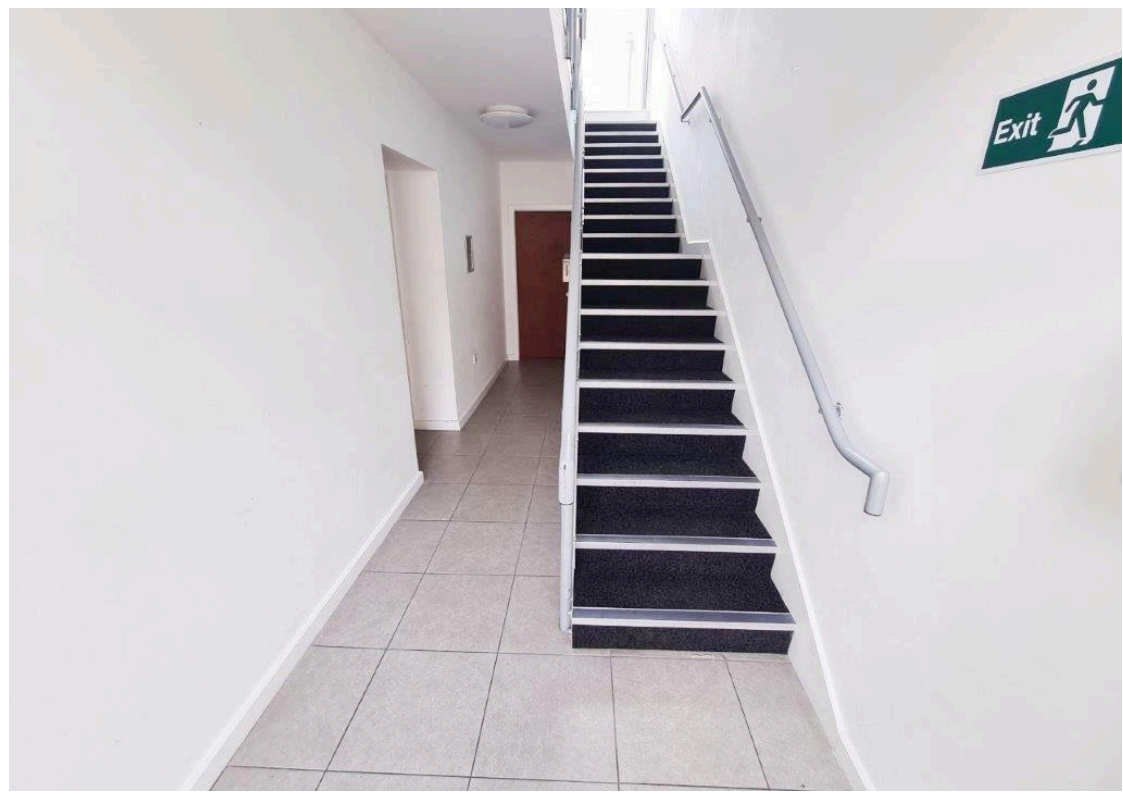


- TWO BEDROOMED APARTMENT
- OPEN PLAN LOUNGE KITCHEN
- GREAT TRANSPORT LINKS

- DG & ELECTRIC HEATERS
- NO VENDOR CHAIN

- GROUND FLOOR
- CLOSE TO AMENITIES
- FANTASTIC FIRST TIME BUYER OPPORTUNITY
- COUNCIL TAX B



Property Description

**** FIRST TIME BUYERS DO NOT MISS OUT ** TWO BEDROOM GROUND FLOOR APARTMENT ** NO VENDOR CHAIN ****

Saltsman and Co Estate Agents welcome to the open market this two bedroomed ground floor apartment for sale with no vendor chain. This apartment is perfectly located to provide easy access to local amenities and transport connections, and is ready for any buyer to move straight into and make their own. Briefly, the accommodation comprises: entrance hall, open plan lounge and kitchen, bathroom, and two bedrooms. The apartment is uPVC double glazed and warmed via electric heaters. Early internal viewing is strongly advised.

ENTRANCE HALL

Doors providing access to bedrooms, bathroom, and open plan lounge kitchen.

LOUNGE KITCHEN

uPVC double glazed doors to Juliet balcony. Wall and base units with worksurface over with inset sink and drainer, and inset four ring electric hob with oven beneath and extractor above. Door to large storage cupboard with plumbing for washing machine. Electric heater and light point.

BEDROOM

uPVC double glazed window, electric heater, and light point. Door to ensuite.

ENSUITE SHOWER

Enclosed shower cubicle, low level wc and pedestal hand wash. Part tiled to walls and tiled to floor. Light point.

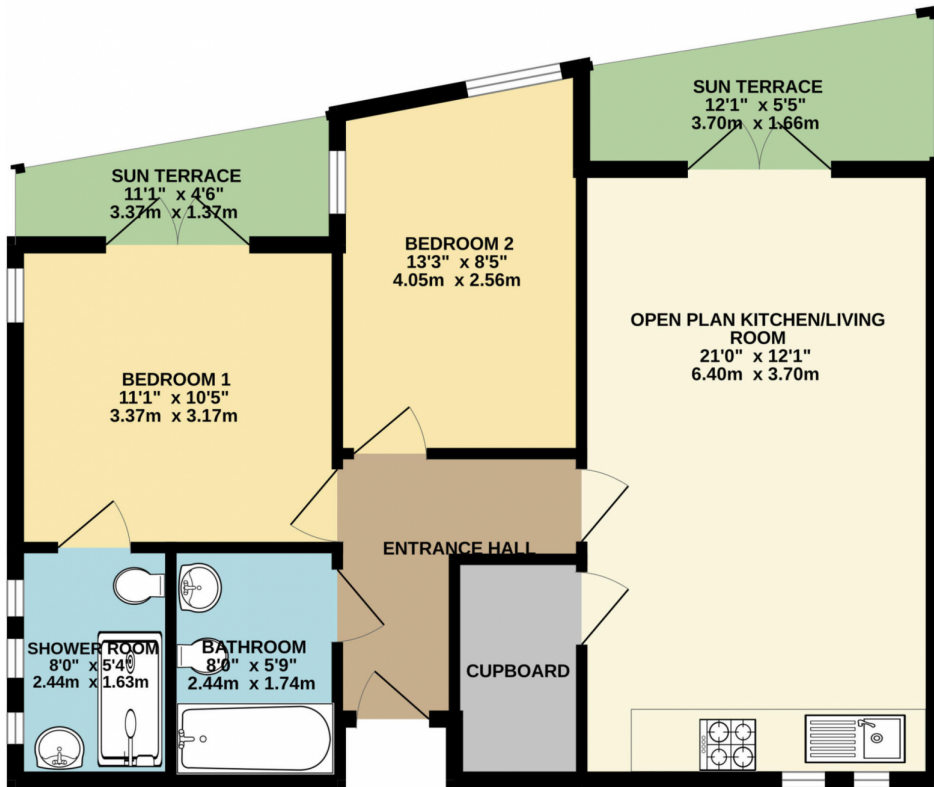
BEDROOM

uPVC double glazed window, electric heater, and light point.

BATHROOM

Panel bath, low level wc and pedestal handwash basin. Wall mounted heated chrome towel rail, part tiled to walls and tiled to floor. Light point.

GROUND FLOOR



Whilst every attempt has been made to ensure the accuracy of the floorplan contained here, measurements of doors, windows, rooms and any other items are approximate and no responsibility is taken for any error, omission or mis-statement. This plan is for illustrative purposes only and should be used as such by any prospective purchaser. The services, systems and appliances shown have not been tested and no guarantee as to their operability or efficiency can be given.
Made with Metropix ©2024



Energy performance certificate (EPC)

1, Droylsden Wharf Road
Droylsden
MANCHESTER
M43 6SR

Energy rating

D

Valid until:

8 January 2029

Certificate number:

8968-7722-6159-3164-7902

Property type

Ground-floor flat

Total floor area

68 square metres

Rules on letting this property

Properties can be let if they have an energy rating from A to E.

You can read [guidance for landlords on the regulations and exemptions \(https://www.gov.uk/guidance/domestic-private-rented-property-minimum-energy-efficiency-standard-landlord-guidance\)](https://www.gov.uk/guidance/domestic-private-rented-property-minimum-energy-efficiency-standard-landlord-guidance).

Energy rating and score

This property's energy rating is D. It has the potential to be C.

[See how to improve this property's energy efficiency.](#)

The graph shows this property's current and potential energy rating.

Properties get a rating from A (best) to G (worst) and a score. The better the rating and score, the lower your energy bills are likely to be.

For properties in England and Wales:

the average energy rating is D
the average energy score is 60

Score	Energy rating	Current	Potential
92+	A		
81-91	B		
69-80	C		76 C
55-68	D	66 D	
39-54	E		
21-38	F		
1-20	G		

Breakdown of property's energy performance

Features in this property

Features get a rating from very good to very poor, based on how energy efficient they are. Ratings are not based on how well features work or their condition.

Assumed ratings are based on the property's age and type. They are used for features the assessor could not inspect.

Feature	Description	Rating
Wall	System built, as built, insulated (assumed)	Good
Roof	Pitched, insulated (assumed)	Good
Window	Fully double glazed	Good
Main heating	Room heaters, electric	Very poor
Main heating control	Programmer and appliance thermostats	Good
Hot water	Electric immersion, off-peak	Poor
Lighting	Low energy lighting in all fixed outlets	Very good
Floor	Solid, insulated (assumed)	N/A
Secondary heating	None	N/A

Primary energy use

The primary energy use for this property per year is 276 kilowatt hours per square metre (kWh/m²).

How this affects your energy bills

An average household would need to spend **£792 per year on heating, hot water and lighting** in this property. These costs usually make up the majority of your energy bills.

You could **save £258 per year** if you complete the suggested steps for improving this property's energy rating.

This is **based on average costs in 2019** when this EPC was created. People living at the property may use different amounts of energy for heating, hot water and lighting.

Heating this property

Estimated energy needed in this property is:

- 3,737 kWh per year for heating
 - 2,005 kWh per year for hot water
-

Impact on the environment

This property's environmental impact rating is D. It has the potential to be D.

Properties get a rating from A (best) to G (worst) on how much carbon dioxide (CO₂) they produce each year.

Carbon emissions

An average household produces 6 tonnes of CO₂

This property produces 3.2 tonnes of CO₂

This property's potential production 3.2 tonnes of CO₂

You could improve this property's CO₂ emissions by making the suggested changes. This will help to protect the environment.

These ratings are based on assumptions about average occupancy and energy use. People living at the property may use different amounts of energy.

Steps you could take to save energy

Step	Typical installation cost	Typical yearly saving
1. High heat retention storage heaters	£1,200 - £1,800	£258

Advice on making energy saving improvements

[Get detailed recommendations and cost estimates \(www.gov.uk/improve-energy-efficiency\)](http://www.gov.uk/improve-energy-efficiency)

Help paying for energy saving improvements

You may be eligible for help with the cost of improvements:

- Free energy saving improvements: [Warm Homes Local Grant \(www.gov.uk/apply-warm-homes-local-grant\)](http://www.gov.uk/apply-warm-homes-local-grant)
 - Heat pumps and biomass boilers: [Boiler Upgrade Scheme \(www.gov.uk/apply-boiler-upgrade-scheme\)](http://www.gov.uk/apply-boiler-upgrade-scheme)
 - Help from your energy supplier: [Energy Company Obligation \(www.gov.uk/energy-company-obligation\)](http://www.gov.uk/energy-company-obligation)
-

Who to contact about this certificate

Contacting the assessor

If you're unhappy about your property's energy assessment or certificate, you can complain to the assessor who created it.

Assessor's name	Philip Eccles
Telephone	07875280160
Email	philip@eccles-epc.co.uk

Contacting the accreditation scheme

If you're still unhappy after contacting the assessor, you should contact the assessor's accreditation scheme.

Accreditation scheme	ECMK
Assessor's ID	ECMK300194
Telephone	0333 123 1418
Email	info@ecmk.co.uk

About this assessment

Assessor's declaration	No related party
Date of assessment	4 December 2018
Date of certificate	9 January 2019
Type of assessment	RdSAP
