



# Netherhall Gardens

Hampstead, NW3

£4,000 per month  
(£923.08 per week)

\*VIDEO TOUR AVAILABLE\*. A spacious 3 bedroom ground floor family apartment in this smart building with direct access to the decked terrace, wood floors and high ceilings. The property is situated in this excellent location in Hampstead (Northern Line), close proximity to the amenities of Finchley Road (Jubilee Line). Accommodation comprises spacious reception room with direct access to the terrace, ultra modern fully fitted kitchen, double bedroom with fitted wardrobes and en-suite bathroom, further double bedroom with fitted wardrobes and en-suite shower room, single bedroom with en-suite shower room, guest cloakroom with utilities. Sole Agent.

**CHESTERTONS**



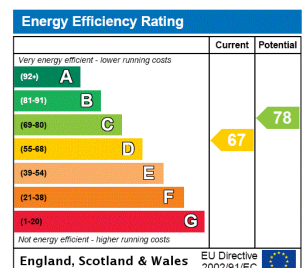
# Netherhall Gardens

Hampstead, NW3

- A Spacious Ground Floor Family Apartment in Smart Building
- 3 Bedrooms, 3 Bathrooms, Reception, Ultra Modern Fully Fitted Kitchen
- Direct Access to the Decked Terrace, Wood Floors, High Ceilings
- Situated in this Excellent Location in Hampstead (Northern Line), Close Proximity to Finchley Road (Jubilee Line)



**Deposit Required:** £4,615.38  
**Local Authority:** London Borough Of Camden  
**Council Tax Band:** E  
**EPC Rating:** D  
**Furnished**

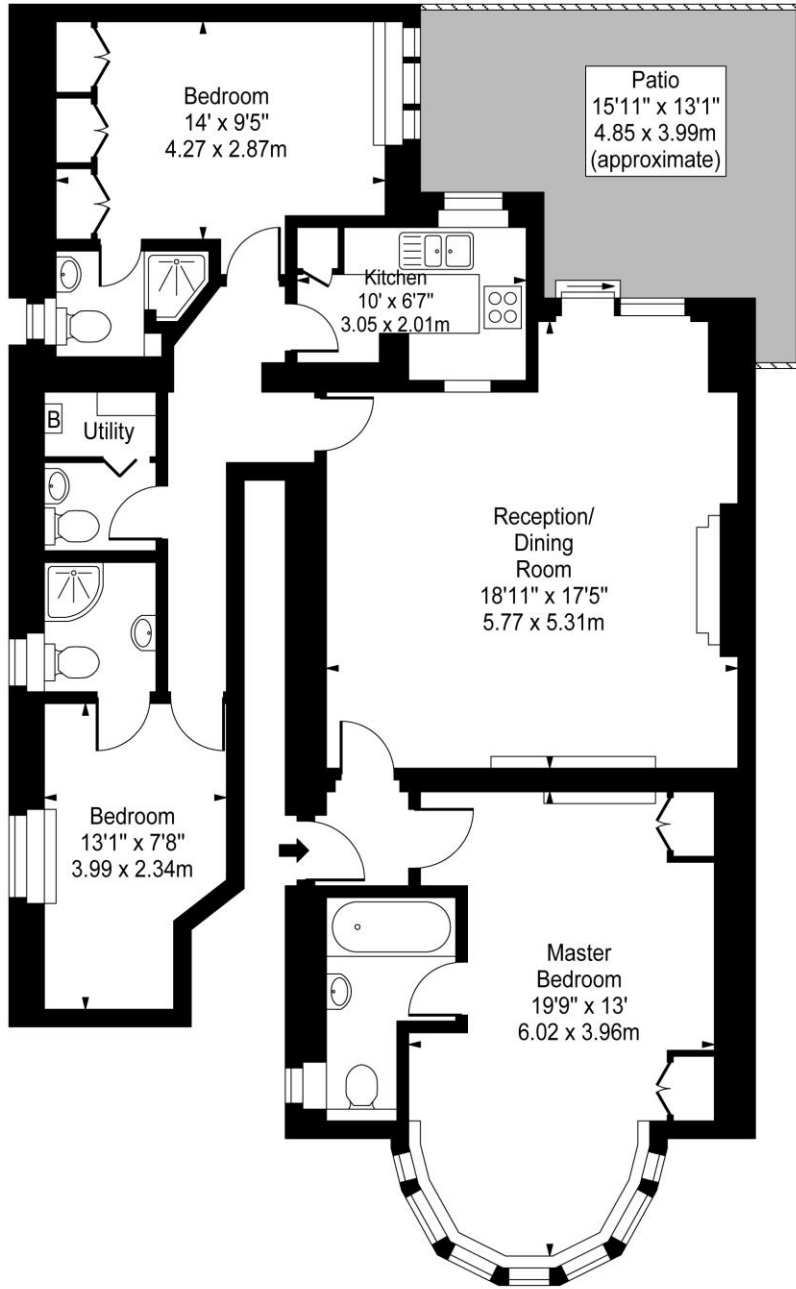


### Chestertons Hampstead Lettings

55-56 Hampstead High Street  
 Hampstead  
 London  
 NW3 1QH  
[hampsteadlettingsusers@chestertons.co.uk](mailto:hampsteadlettingsusers@chestertons.co.uk)  
 02077941125  
[chestertons.co.uk](http://chestertons.co.uk)

Additional tenant charges apply (fees apply to non-AST tenancies only)  
 Tenancy Agreement Fee: £300  
 References per Tenant/Guarantor: £60  
 Inventory check (approx. £100 – £250 inc. VAT)  
[chestertons.co.uk/property-to-rent/applicable-fees](http://chestertons.co.uk/property-to-rent/applicable-fees)

# Netherhall Gardens, NW3



Ground Floor

Approx Gross Internal Area **1067 Sq Ft - 99.12 Sq M**

For Illustration Purposes Only - Not To Scale

[www.goldlens.co.uk](http://www.goldlens.co.uk)

Prepared for Chestertons

Ref. No. 010385J

