



Brook Road, NW2

£250,000

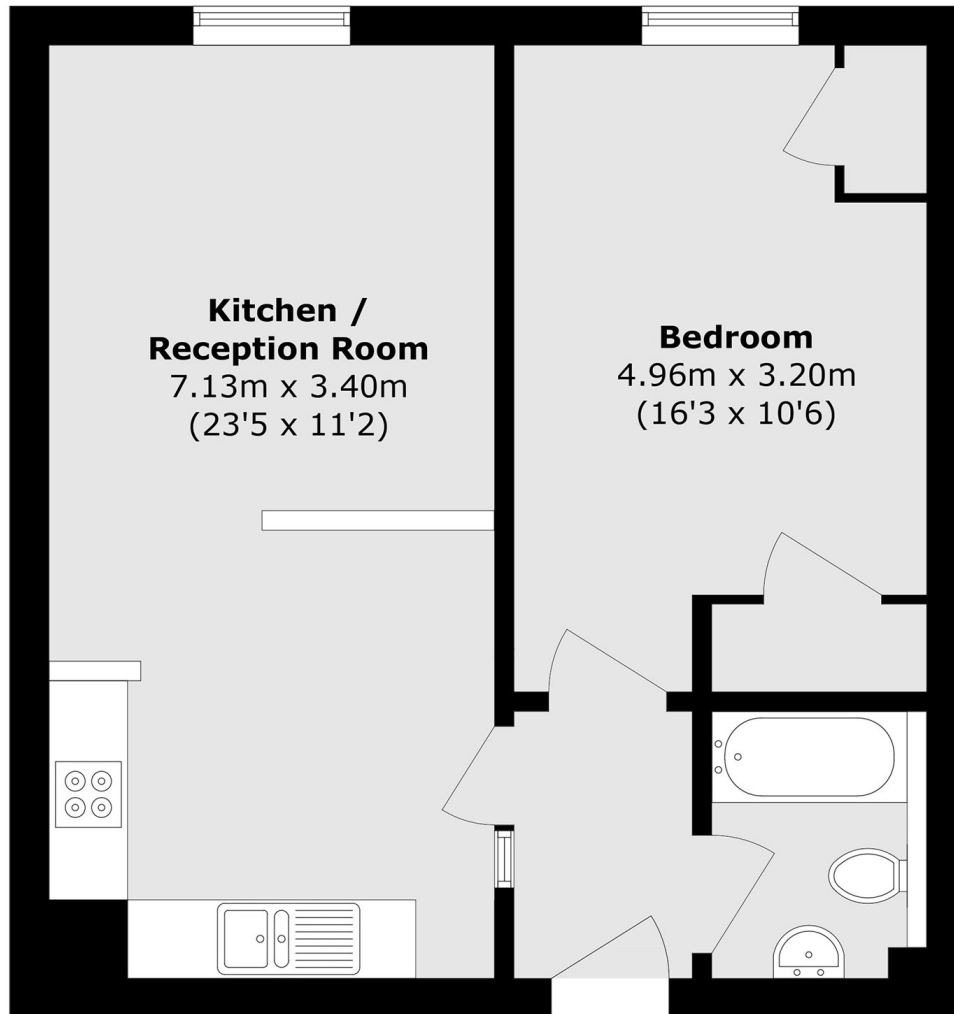
A well presented one bedroom flat set within a listed building in a secure gated development. The property features an open plan living and reception area, secure allocated parking and is offered to the market chain free.

Located on Brook Road, moments away from the 80 acre Gladstone Park and close to Dollis Hill Underground Station (Jubilee Line) and Brent Cross West Station (Thameslink).

Features

- Gated Development
- Listed Building
- One Bedroom
- Communal Gardens
- Secure Parking
- Chain Free

Brook Road, London, NW2



Total area (approx.): 47.8 sq. m (514.5 sq. ft)