







Chaucer Grove, Exeter, EX4 7BX

Price Guide £275,000

 3  3  2 



Guide Price £275,000-£285,000

A fantastic opportunity to purchase this well-presented three-bedroom end-terrace home, situated in the ever-popular Chaucer Grove development in Exeter.

Being sold with no onward chain, the property benefits from a garage with parking space, an enclosed rear garden, and a bright, modern interior – making it an ideal choice for families, first-time buyers or investors alike.

On the ground floor, there is a welcoming hallway with a downstairs WC, a spacious living room, and a generous kitchen/dining room with patio doors opening onto the rear garden.

Upstairs, there are three bedrooms, including a principal bedroom with an en-suite shower room, plus a modern family bathroom.

Outside, the property enjoys an enclosed rear garden, perfect for outdoor dining and entertaining, as well as a garage with parking space in front, offering valuable convenience.

Located in a sought-after residential area with good access to local schools, amenities, and transport links into Exeter city centre, this property combines comfort, practicality and excellent value.



Ground Floor

Entrance Hall & Cloakroom/WC

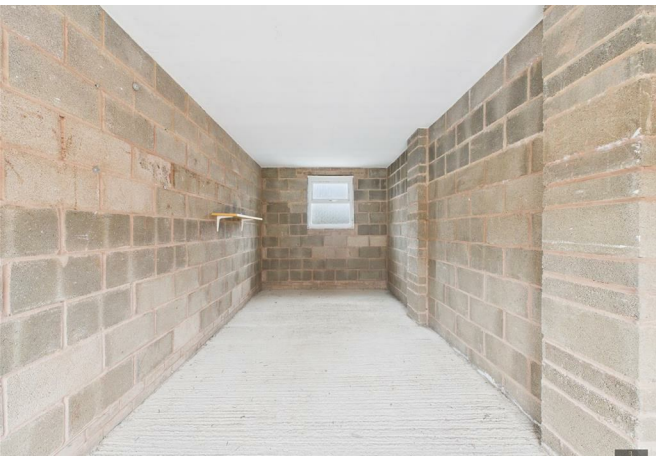
A welcoming entrance with access to a convenient downstairs cloakroom.

Living Room

A comfortable and well-proportioned space positioned at the heart of the home, ideal for relaxing or entertaining.

Kitchen / Dining Room

A bright and sociable room spanning the rear of the property. Fitted with a range of wall and base units, integrated cooking appliances, and space for further appliances. Double doors lead directly out to the rear garden, creating an excellent indoor-outdoor flow.





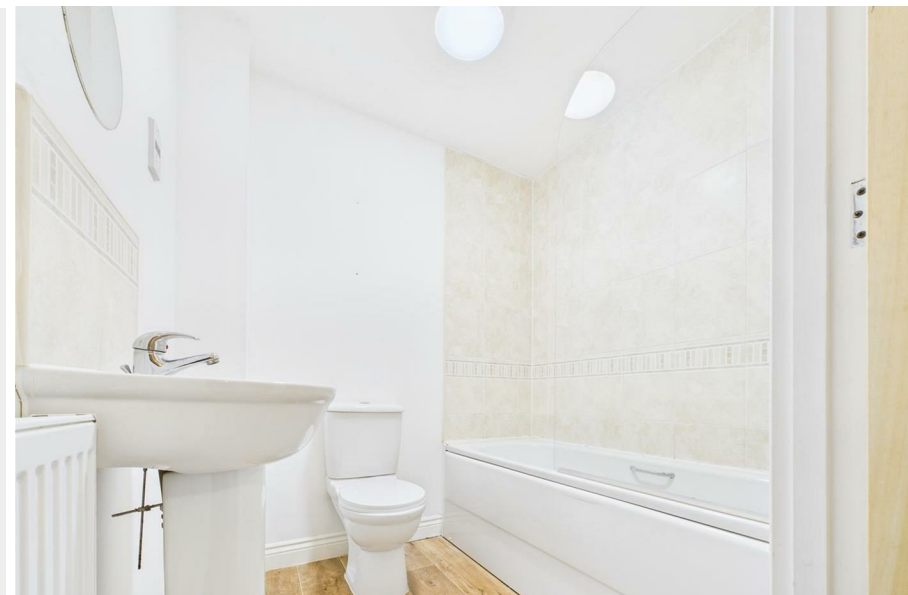
First Floor
Principal Bedroom with En-Suite
A generously sized double bedroom with its own en-suite shower room.

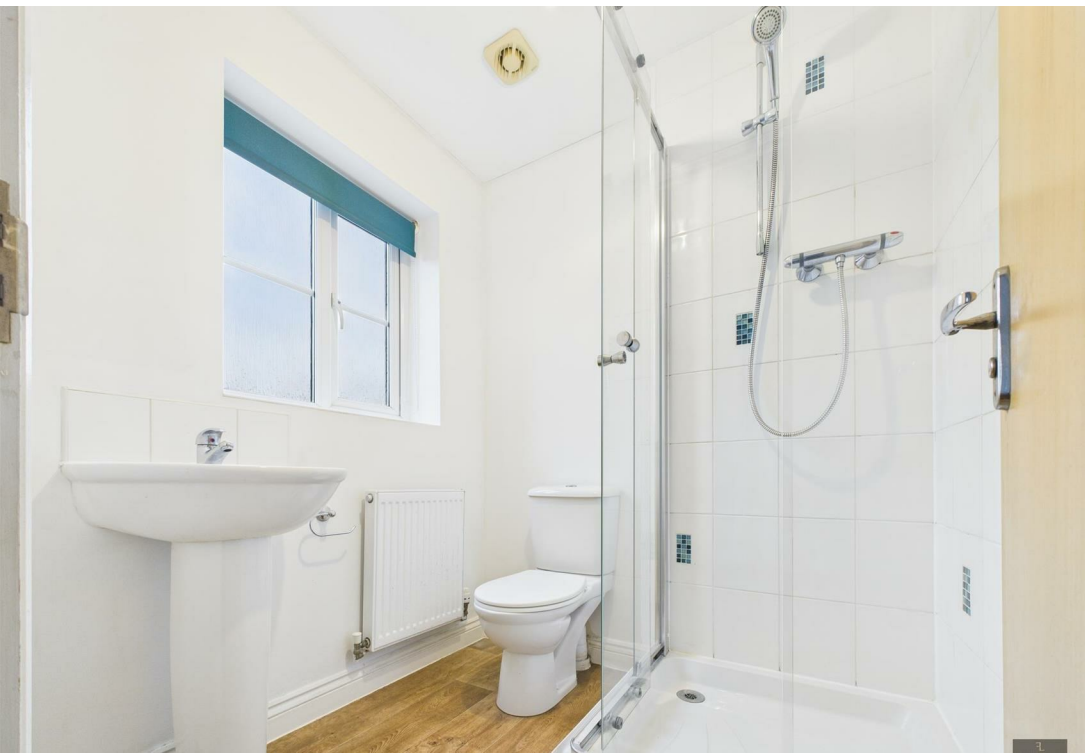
Two Further Bedrooms
A second double bedroom and a well-sized single bedroom, each with ample natural light.

Family Bathroom
A modern three-piece suite with a bath and shower over.

Outside
The property enjoys an enclosed rear garden, ideal for outdoor dining, play or easy maintenance.
To the front there is access to a garage with additional parking space in front, offering valuable convenience in this popular residential setting.

Location
Chaucers Grove is a sought-after development offering easy access to Exeter city centre, well-regarded local schools, shops, and transport links, including quick access to the M5 and major routes.

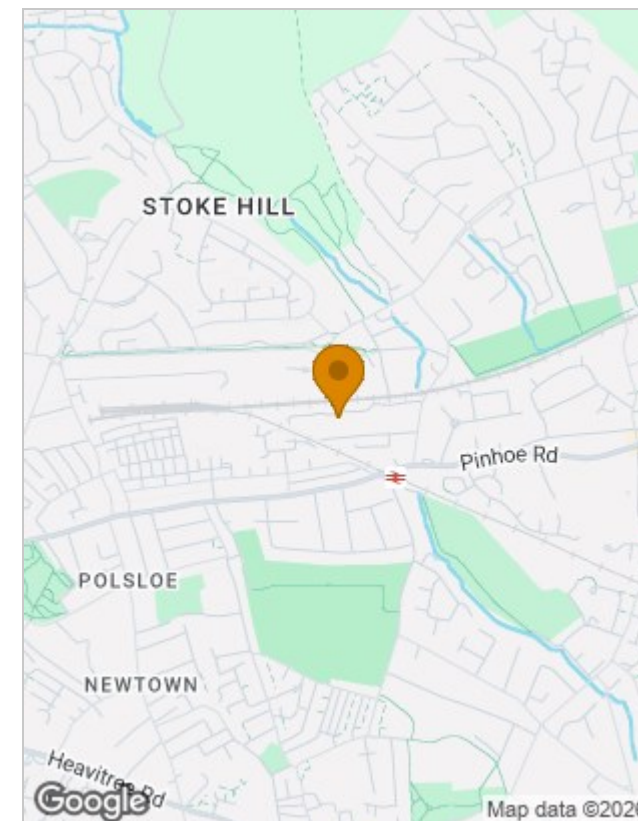




Floor Plans



Location Map



Viewing

Please contact our Francis Louis Sales Office on 01392 243077 if you wish to arrange a viewing appointment for this property or require further information.

Lower Ground Floor, 70 South Street, Exeter, Devon, EX1 1EG
Tel: 01392 243077 Email: info@francislouis.co.uk <https://www.francislouis.co.uk>

