



Hardington

Belmont Street, NW1

Asking Price £400,000

Located on the sixth floor of this purpose built block, this two-bedroom apartment offers excellent potential for a purchaser looking to refurbish and modernise a property.

The property comprises an entrance hall, a bright reception room with access to a private balcony, a separate kitchen, two good-sized bedrooms, and a bathroom.

CHESTERTONS



Hardington

Belmont Street, NW1

- Purpose Built Block
- Two Bedrooms
- Balcony
- Excellent Location
- Modernisation Required



Belmont Street is the perfect location to explore the fantastic amenities of Camden Town, Chalk Farm, Belsize Park and Primrose Hill. Transport links are excellent with Chalk Farm underground around the corner and Kentish Town West Overground Station in close proximity.

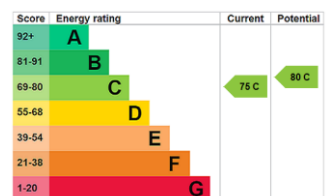
Tenure: Leasehold (89 years remaining)

Service Charge: £2301 Per Annum

Ground Rent: £10 Per Annum

Local Authority: Camden

Council Tax Band: B



Chestertons Camden & Kentish Town Sales

99-101 Parkway

Camden

London

NW1 7PP

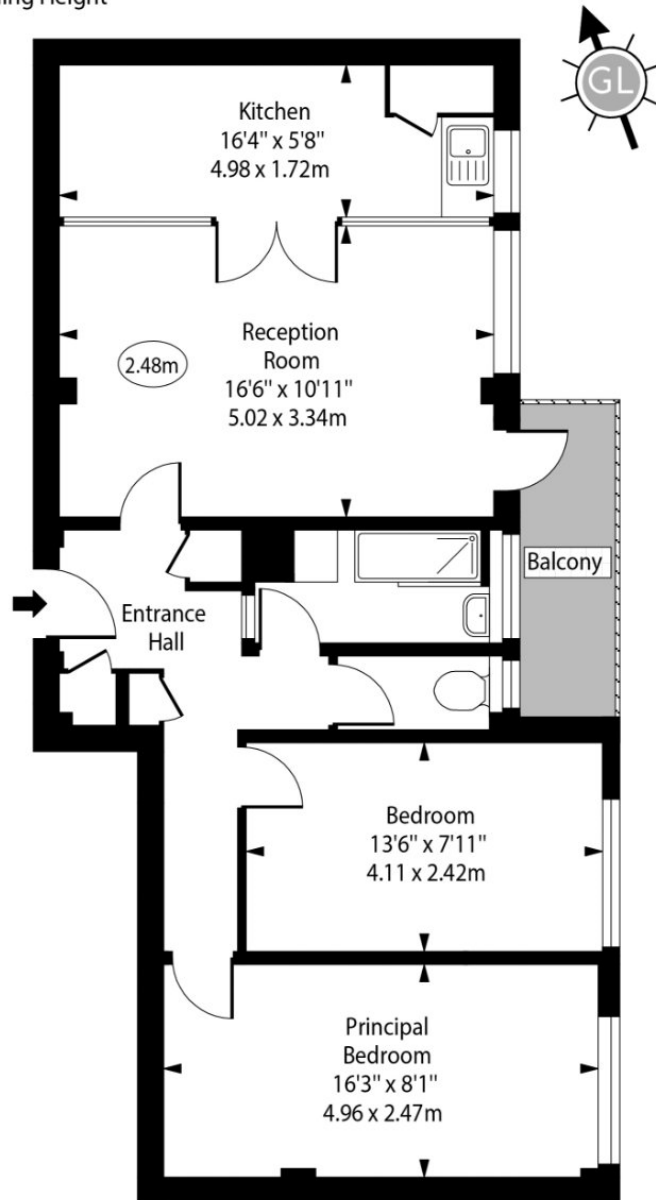
camden@chestertons.co.uk

020 7267 2053

chestertons.co.uk

Hardington, Belmont Street

○ - Ceiling Height



Sixth Floor

Gross Internal Area - 688 Sq Ft - 63.92 Sq M

Approx Gross Internal Area 688 Sq Ft - 63.92 Sq M

Every attempt has been made to ensure the accuracy of the floor plan shown. However, all measurements, fixtures, fittings, and data shown are approximate interpretations and for illustrative purposes only. Measured according to the RICS. Not To Scale.

www.goldlens.co.uk
Ref. No. 030645.1D

