



47 The Parklands, Hullavington, Chippenham, Wiltshire, SN14 6DL

Detached modern bungalow
Thoroughly upgraded and refurbished
Immaculately finished and an ideal lock-up
and leave
Open plan living area
3 bedrooms
Bathroom and utility room
Private parking for numerous vehicle types
Garage
South-facing garden
Peaceful village setting with amenities close by



01666 840 886
jamespyle.co.uk



The Barn, Swan Barton, Sherston, Wiltshire, SN16 0LJ
James Pyle Ltd trading as James Pyle & Co. Registered in England & Wales No: 08184953

Guide Price: £475,000

Approximately 890 sq.ft excluding garage

‘Recently refurbished and upgraded, this detached bungalow is immaculately presented and ready to move into’

The Property

This beautifully presented modern detached bungalow is ideally positioned on the leafy edge of Hullavington enjoying a peaceful setting adjacent to fields whilst remaining within easy walking distance of the village amenities. The property has undergone a thorough programme of refurbishment and improvement over the last two years, resulting in an immaculate home ready for its new owners. Upgrades include enhanced wall insulation, completely rewired and replumbed with a new oil tank, external boiler, and radiators, and all new double-glazed windows and doors.

The accommodation has been thoughtfully reconfigured to create a bright and airy open-plan living space that forms the heart of the home. This area, bathed in natural light, seamlessly combines the kitchen, dining, and sitting areas. The kitchen features integrated appliances such as a fridge/freezer, dishwasher, induction hob and oven, a water

softener, and a Quooker boiler and filter tap for modern convenience. The sitting area benefits from a cosy corner wood-burning stove and sliding doors that open directly to the garden. At the front of the property, an entrance hall leads to a practical utility room with a WC. The property offers three bedrooms comprising two doubles and a single, alongside a stylish bathroom equipped with both a bath and a separate shower unit.

Set within a spacious corner plot, the current owners have created a substantial amount of off-road parking for numerous vehicles including a secure, gated bay large enough for a motorhome. Enhanced security features such as CCTV and secure gates make this an ideal 'lock-up and leave' home. The garden enjoys a superb south-facing aspect, offering a good degree of privacy. Predominantly laid to lawn, it features a paved patio terrace with an electric awning and carefully planted borders—perfect for outdoor relaxation and entertaining. A single garage with a roll-over

door completes this appealing home.

Situation

The thriving village of Hullavington has a lively community with a primary school, village shop/post office and garage, parish church which hosts coffee mornings, and a village hall which offers a pre-school option as well as regular exercise classes and hosts games nights. Located on the rural edge of the village there is the Flying Monk taproom and café. The market town of Malmesbury is located only 6 miles away with further amenities and an Ofsted 'Outstanding' secondary school whilst the larger town of Chippenham is 7 miles away for a more comprehensive range of facilities. The village is superbly located for the commuter with Junction 17 of the M4 only a few minutes drive away ideal for those commuting to Swindon, Bath and Bristol and the M5. Chippenham railway station is within a 15 minutes' drive with regular mainline services to London Paddington.

Additional Information

The property is Freehold with oil-fired central heating, mains drainage, water and electricity. Ultrafast broadband is available. Information taken from the Ofcom mobile and broadband checker website, please check the website for more information and mobile phone coverage. Wiltshire Council Tax Band C.

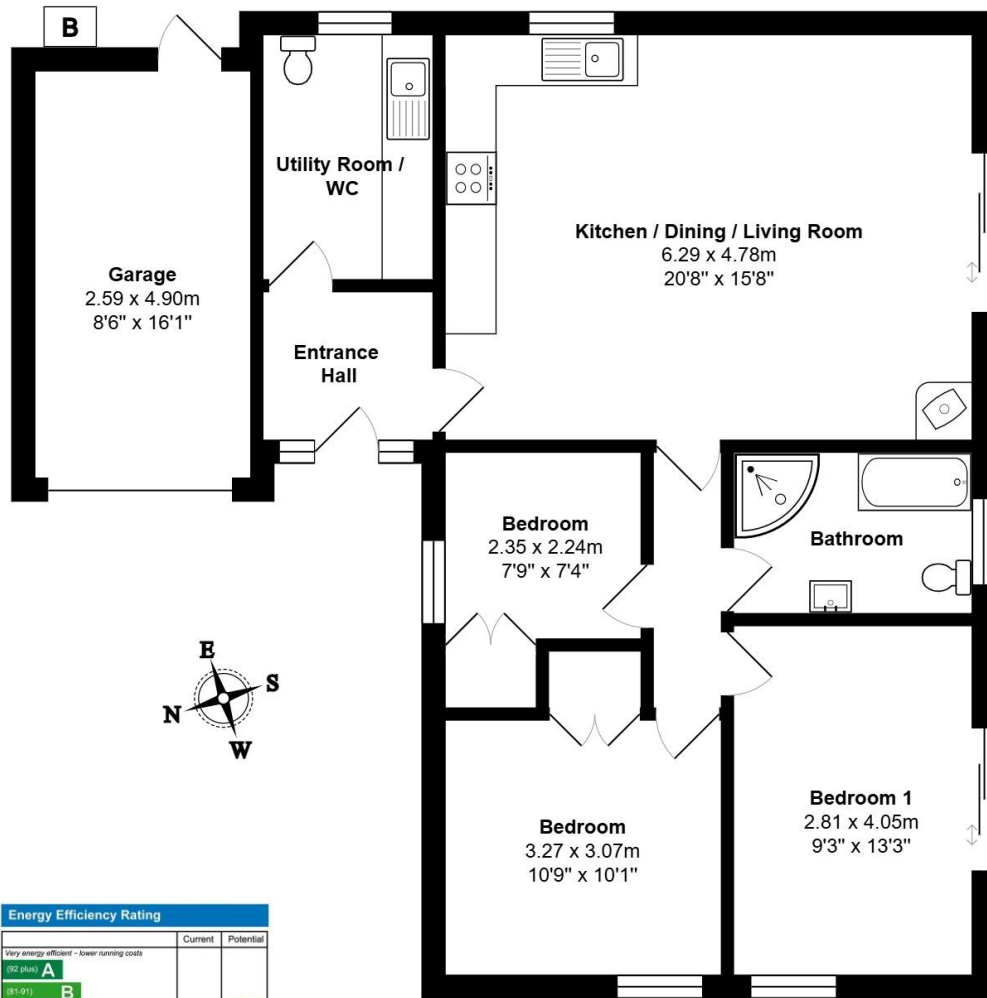
Directions

From the M4 Junction 17 head north on the A429. By the former hangars, turn left at the roundabout signposted to Hullavington and continue over the next roundabout. After about 3/4 mile turn left into The Street into the village. Continue through the heart of the village and take the right hand turn into The Parklands, bear left and locate the property as the last one on the left hand side.

Postcode SN14 6DL
What3words///driveways.vesting.averages







Ground Floor

Total Area: 82.6 m² ... 890 ft² (excluding garage)

All measurements are approximate and for display purposes only

Energy Efficiency Rating	
Current	Potential
Very energy efficient - lower running costs	
(92 plus) A	
(81-91) B	
(69-80) C	78
(55-68) D	
(39-54) E	51
(21-38) F	
(1-20) G	
Not energy efficient - higher running costs	
EU Directive 2002/91/EC	
England & Wales	



James Pyle Holdings Ltd and any parties they are acting for hereby give notice that these details are for guidance only and cannot guarantee accuracy of any description, dimension, condition or any required permission for occupation and use. It is not company policy to test any services or appliances in properties offered for sale and these should be verified by the purchaser's solicitors. James Pyle Holdings Ltd will not be liable for any loss arising from the use of these details. No responsibility is taken for any errors, omissions or misstatements within these particulars. It should not be assumed that the property has all the necessary planning, building regulation or other consents. These particulars do not form any part of any offer or contract and must not be relied upon as statements or representations of fact. James Pyle & Co is a trading name of James Pyle Holdings Ltd, registered in England & Wales. Registered number 10927906

COTSWOLD & COUNTY (HEAD OFFICE)

The Barn, Swan Barton, Sherston SN16 0LJ

01666 840 886 or 01452 812 054

LONDON (ASSOCIATE OFFICE)

121 Park Lane, Mayfair W1k 7AG

0207 0791 577