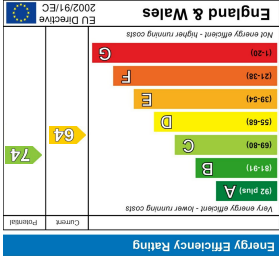
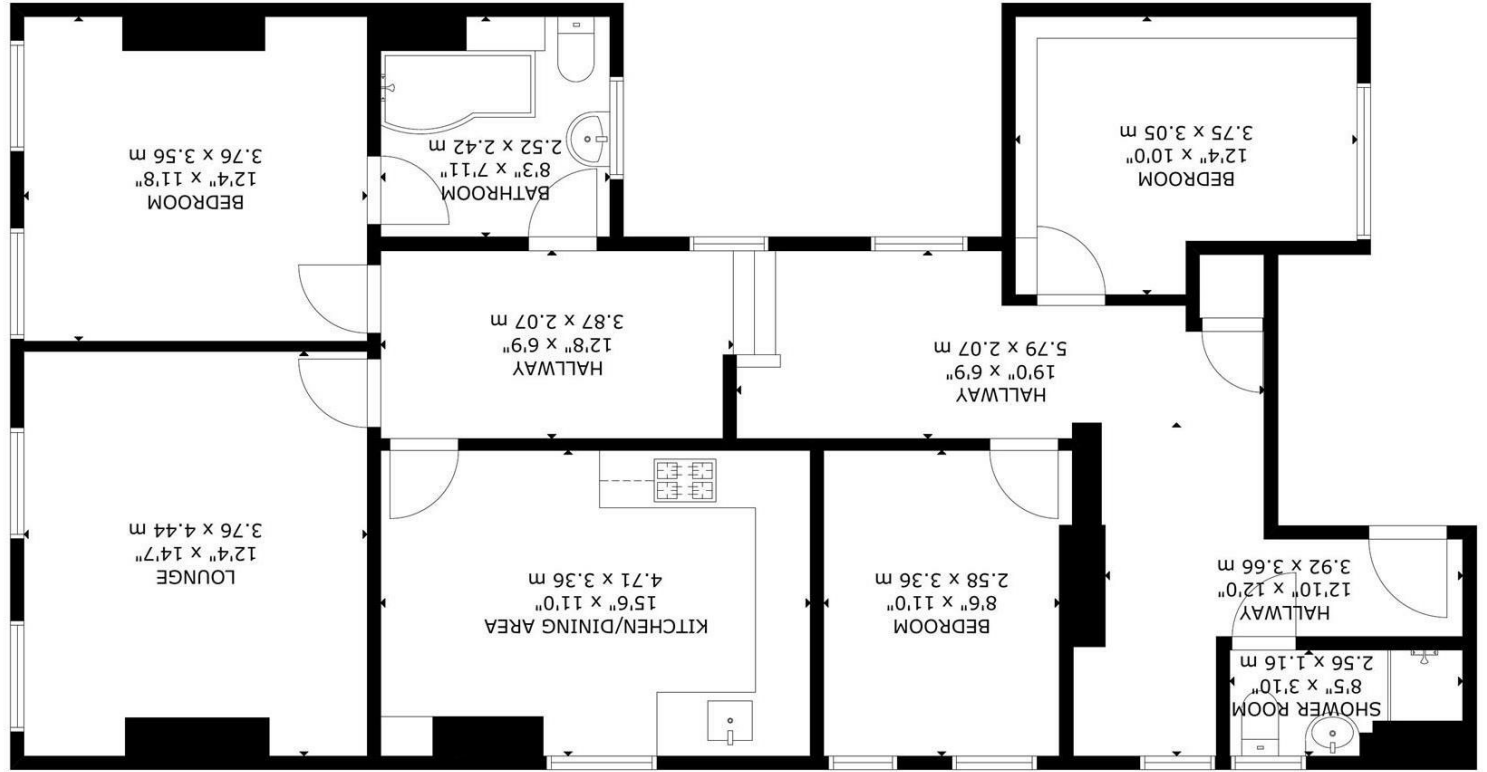
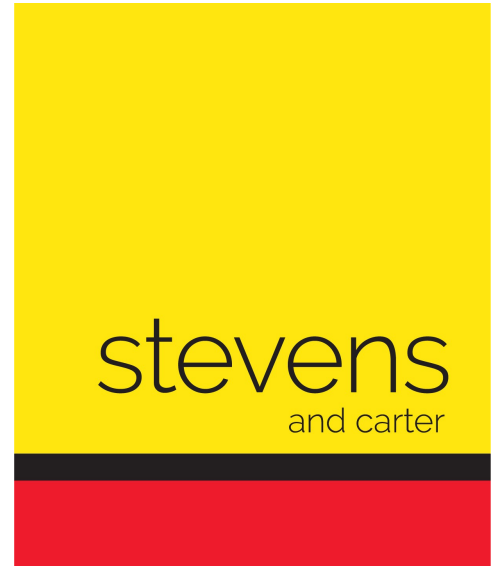


FLOOR 1

GROSS INTERNAL AREA
TOTAL: 107 m²/1,149 sq ft
FLOOR 1: 107 m²/1,149 sq ft
SIZE AND DIMENSIONS ARE APPROXIMATE, ACTUAL MAY VARY



3 Market Street, Hailsham



- 3D Virtual Tour
- Extremely Spacious First Floor Apartment
- Central Location
- Remainder Of Long Lease
- Three Double Bedrooms
- Two Bathrooms
- Lounge
- Gas Central Heating
- Viewing Highly Advised
- No Onward Chain

Leasehold

£200,000

Offers Over

3 BEDROOM

1 RECEPTION

2 BATHROOM

0 GARAGE

3 Market Street, Hailsham

3 Market Street, Hailsham

DESCRIPTION

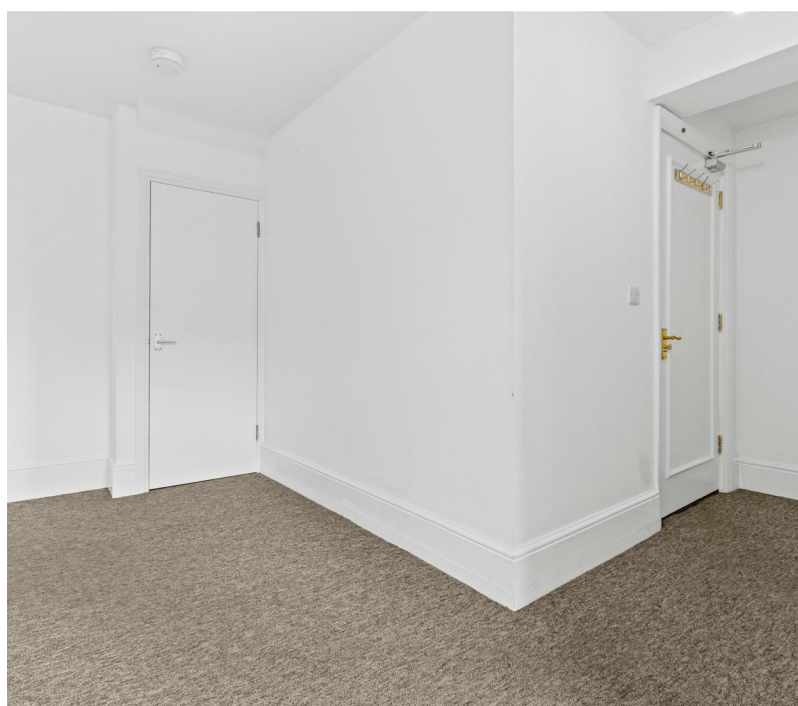
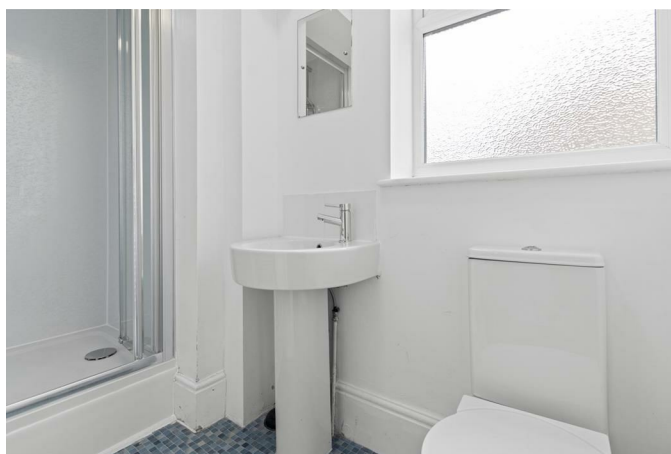
3D Virtual Tour | Extremely Spacious Flat | Central Location | Lounge | Kitchen/Dining Room | Three Double Bedrooms | Two Bathrooms | Gas Central Heating | Remainder Of 999 Year Lease | Viewing Advised |

Stevens and Carter Estate Agents are pleased to bring to the market this spacious flat positioned in this central location. Situated within a short stroll from local shops, cafes and bus links to further afield, it is an ideal setting to call home.

Upon entry, the bright and airy hallway welcomes you in and provides access to all principle rooms alongside benefiting from a storage cupboard too. The spacious lounge lies to the front and offers ample space for your soft furnishings and the large windows allows plenty of natural sunlight to come flooding in. The kitchen/dining room lies adjacent, here you will find ample cupboard for storage, work surfaces and space for your appliances. There is even enough space for a good size dining table and chairs.

Three good size double bedrooms are present. The larger of the three is positioned to the front and provides space for your associated bedroom furniture. A door from here leads into the ensuite bathroom which comprises of a bath with shower over, wash basin and WC. The remaining bedrooms are situated close by and are serviced by a shower room/WC.

Lease Information - Remainder Of 999 Years
Ground Rent - £100 Per Year



3 Market Street, Hailsham
