



HAZELBOURNE ROAD, SW12

£625,000

- Three double bedrooms
- Spacious reception room
- Mansion flat
- No onward chain
- Modern kitchen
- Energy rating: D





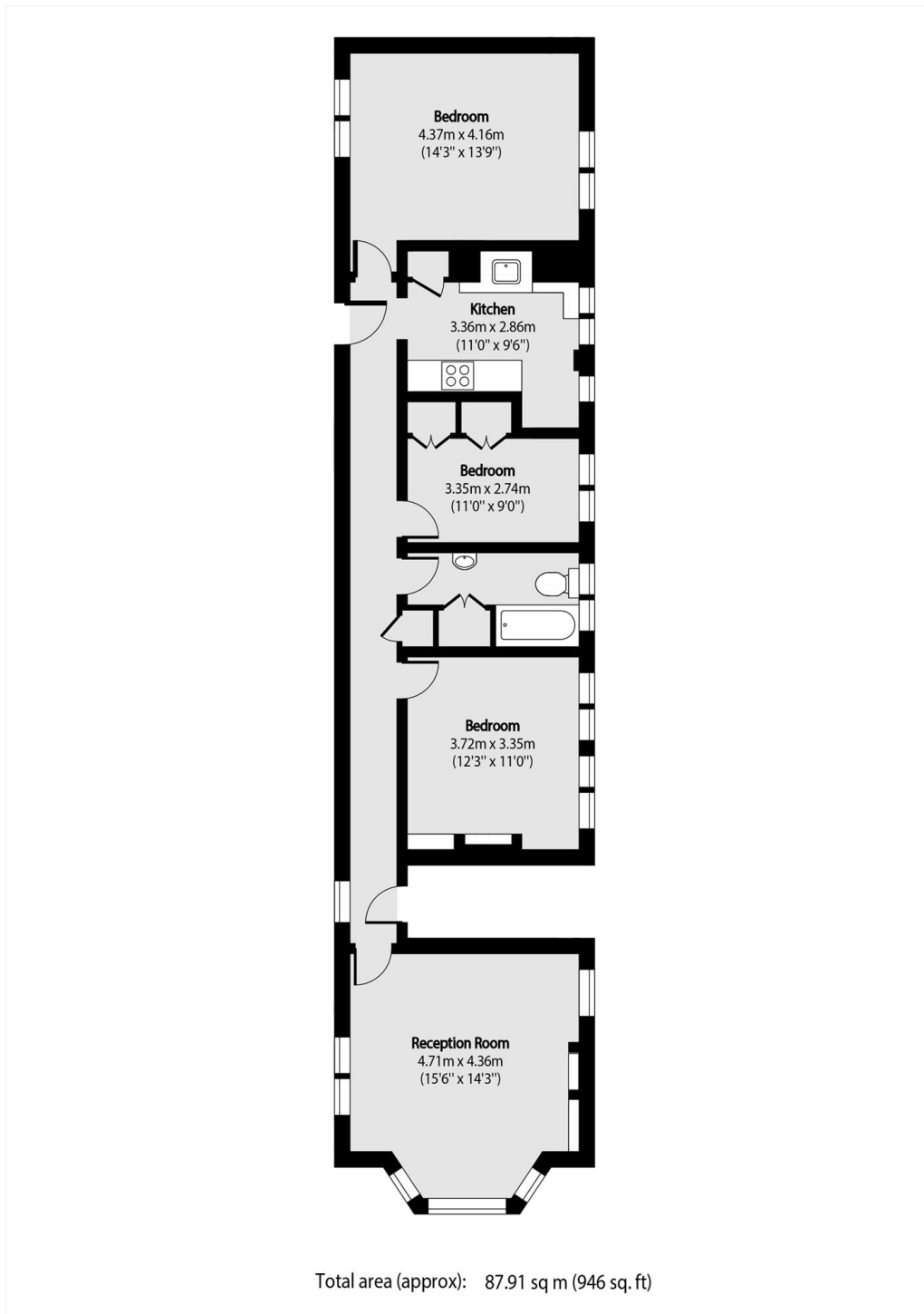
## ABOUT THE HOME

A beautifully presented three double bedroom flat, spanning almost 1000 sq. Ft, in a great location between Balham and Clapham South. It features three generous bedrooms, a modern kitchen and bathroom, and a spacious reception room flooded with light.

Hazelbourne Road is ideally situated between Balham and Clapham South and the plethora of shops, bars and restaurants these locations have to offer.





**JACKSONS BALHAM**

8-11 Balham Station Road,  
London, SW12 9SG  
Sales: 020 8675 6555  
Lettings: 020 8675 6565

Energy Rating: We aim to make our particulars both accurate and reliable. However they are not guaranteed; nor do they form part of an offer or contract. If you require clarification on any points then please contact us, especially if you're traveling some distance to view. Please note that appliances and heating systems have not been tested and therefore no warranties can be given as to their good working order.