



18 Imperial Place, Shoppenhangers Road, Maidenhead SL6 2GN

welcome to

18 Imperial Place, Shoppenhangers Road, Maidenhead

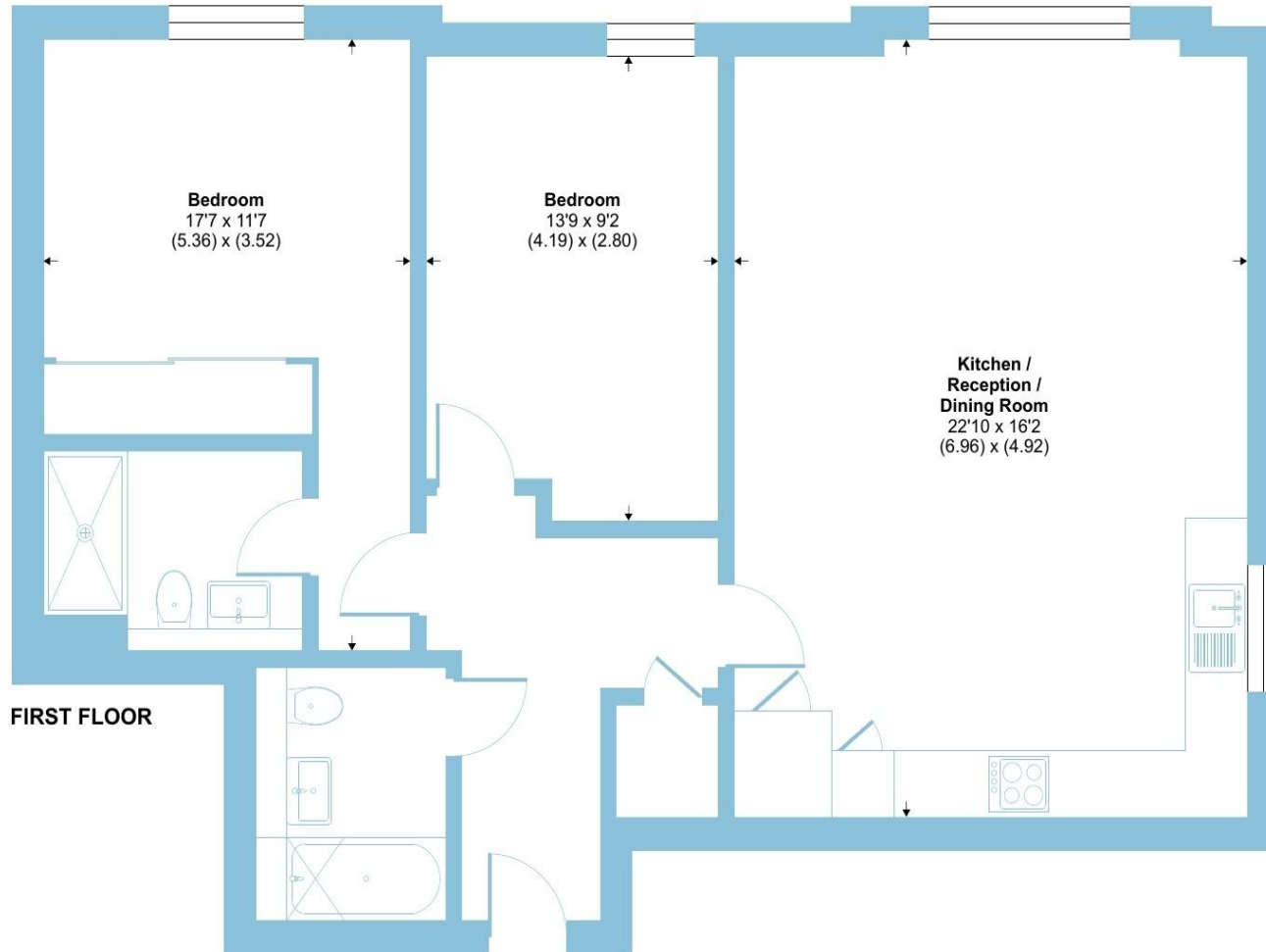
This well presented and spacious two double bedroom, two bathroom apartment offers 860 sq ft of modern, comfortable living. The property benefits from 3 parking spaces, long lease and NO CHAIN.



Shoppenhangers Road, Maidenhead, SL6

Approximate Area = 796 sq ft / 74 sq m

For identification only - Not to scale



FIRST FLOOR

This well presented and spacious two double bedroom, two bathroom apartment offers 860 sq ft of modern, comfortable living.

The property features a generous open-plan living and dining area, complemented by a contemporary kitchen equipped with a selection of integrated appliances. The impressive 17' principal bedroom includes fitted wardrobes and a stylish en-suite shower room, while the 13' second double bedroom is served by a modern family bathroom.

The apartment is set within well-kept communal grounds, creating an attractive and peaceful environment for residents to enjoy. Additional benefits include three parking spaces and a long lease in excess of 950 years, providing long-term peace of mind.

Offered to the market with no onward chain, this property presents an excellent opportunity for buyers seeking a ready-to-move-into home in a desirable location. Ideal for first-time buyers, downsizers, or investors alike.

welcome to

18 Imperial Place, Shoppenhangers Road

- SPACIOUS APARTMENT 860 SQ FT
- TWO DOUBLE BEDROOMS
- EN-SUITE TO MAIN BEDROOM
- LONG LEASE IN EXCESS OF 950 YEARS
- THREE PARKING SPACES
- EASY ACCESS TO TOWN CENTRE & STATION
- BEAUTIFUL COMMUNAL GARDENS
- NO CHAIN

Tenure: Leasehold EPC Rating: C

Council Tax Band: E Service Charge: 2626.00

Ground Rent: Ask Agent

This is a Leasehold property with details as follows; Term of Lease 999 years from 25 Dec 2008. Should you require further information please contact the branch. Please Note additional fees could be incurred for items such as Leasehold packs.

guide price

£375,000



Please note the marker reflects the postcode not the actual property

check out more properties at rogerplatt.co.uk



Property Ref:
MHD123688 - 0003

1. MONEY LAUNDERING REGULATIONS Intending purchasers will be asked to produce identification documentation at a later stage and we would ask for your co-operation in order that there is no delay in agreeing the sale. 2. These particulars do not constitute part or all of an offer or contract. 3. The measurements indicated are supplied for guidance only and as such must be considered incorrect. Potential buyers are advised to recheck measurements before committing to any expense. 4. We have not tested any apparatus, equipment, fixtures or services and it is in the buyers interest to check the working condition of any appliances. 5. Where an EPC, or a Home Report (Scotland only) is held for this property, it is available for inspection at the branch by appointment. If you require a printed version of a Home Report, you will need to pay a reasonable production charge reflecting printing and other costs. 6. We are not able to offer an opinion either written or verbal on the content of these reports and this must be obtained from your legal representative. 7. Whilst we take care in preparing these reports, a buyer should ensure that his/her legal representative confirms as soon as possible all matters relating to title including the extent and boundaries of the property and other important matters before exchange of contracts.

Roger Platt is a trading name of Sequence (UK) Limited which is registered in England and Wales under company number 4268443, Registered Office is Cumbria House, 16-20 Hockliffe Street, Leighton Buzzard, Bedfordshire, LU7 1GN. VAT Registration Number is 500 2481 05.


roger platt



01628 773333



Maidenhead@rogerplatt.co.uk



25-29 Queen Street, MAIDENHEAD, Berkshire,
SL6 1NB



rogerplatt.co.uk