



**RE/MAX**  
Prime Estates



**11 Vicarage Road, Stourbridge, DY8 4NS**  
**Asking price £199,950**

Being set in the ever popular Wollaston Village, Stourbridge, this delightful mid-terrace house on Vicarage Road offers a perfect blend of comfort and convenience. With three well-proportioned bedrooms, this property is ideal for families or those seeking extra space. The inviting reception room provides a warm and welcoming atmosphere, perfect for relaxing or entertaining guests.

The house features a well-appointed bathroom, ensuring that all your daily needs are met with ease. The layout of the property is practical, making it easy to navigate and enjoy the space.

Situated in a friendly neighbourhood, this home benefits from local amenities and excellent transport links, making it a great choice for commuters and families alike. The surrounding area boasts a variety of parks and recreational facilities, providing ample opportunities for outdoor activities.

This property presents a wonderful opportunity for those looking to settle in a vibrant community while enjoying the comforts of a well-maintained home. Whether you are a first-time buyer or seeking a new family residence, this mid-terrace house on Vicarage Road is certainly worth considering.

### Living Room 11'9" x 14'10" (3.59 x 4.53)



With a UPVC door from the front, stairs to the first floor, under-stairs storage cupboard, fireplace with decorative surround, a double glazed window to the front and a central heating radiator

### Kitchen 11'1" x 8'3" (3.39 x 2.53)



With a door leading from the living room, fitted with a range of wall and base units with worktops, integrated oven & hob, a door leading to the rear and a double glazed window to the rear

### Bathroom



With a door leading from the rear lobby, full height tile surround, WC, hand wash basin, bath with shower over and glass screen, a double glazed

windows to the rear and side and a central heating radiator

### Landing

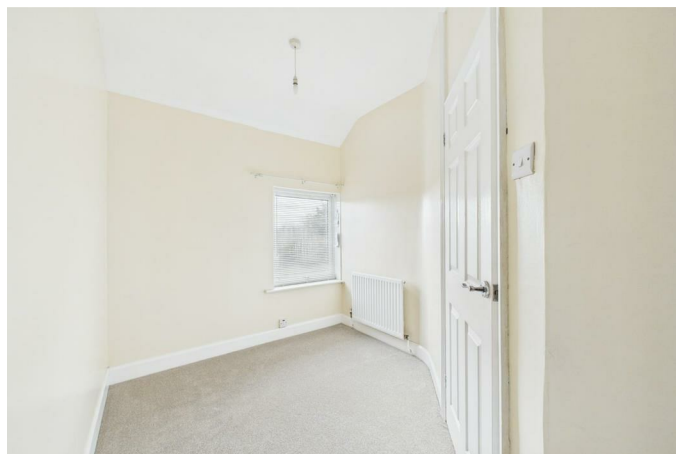
With stairs leading from the living room, doors to various rooms

### Bedroom 11'10" x 11'9" (3.61 x 3.60)



With a door leading from the landing, a double glazed window to the front and a central heating radiator

### Bedroom 7'6" x 11'1" (2.30 x 3.38)



With a door leading from the landing, a double glazed window to the rear and a central heating radiator

### Bedroom 7'6" x 8'3" (2.31 x 2.54)



With a door leading from the landing, built in store cupboard a double glazed window to the rear and a central heating radiator

### Garden

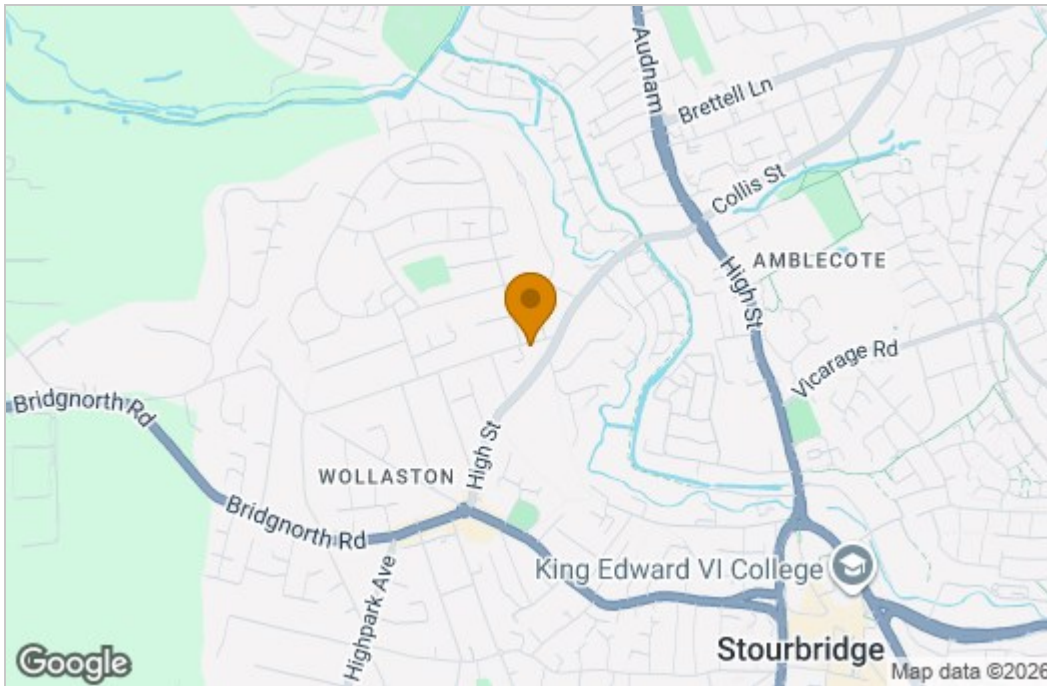


With a door leading from the rear lobby, slabs throughout and a gate leading to the side entrance

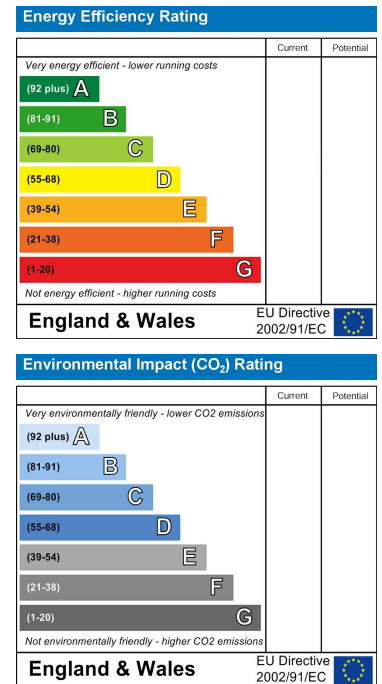
## Floor Plan



## Area Map



## Energy Efficiency Graph



These particulars, whilst believed to be accurate are set out as a general outline only for guidance and do not constitute any part of an offer or contract. Intending purchasers should not rely on them as statements of representation of fact, but must satisfy themselves by inspection or otherwise as to their accuracy. No person in this firm's employment has the authority to make or give any representation or warranty in respect of the property.

Stourbridge, West Midlands, DY8 1DX

Tel: +44 (0) 1384 438457 Email: [prime.estates@remax.uk](mailto:prime.estates@remax.uk) <https://remax.uk/locations/RE-MAX-Prime-Estates>