



13 ROCKINGHAM MEWS

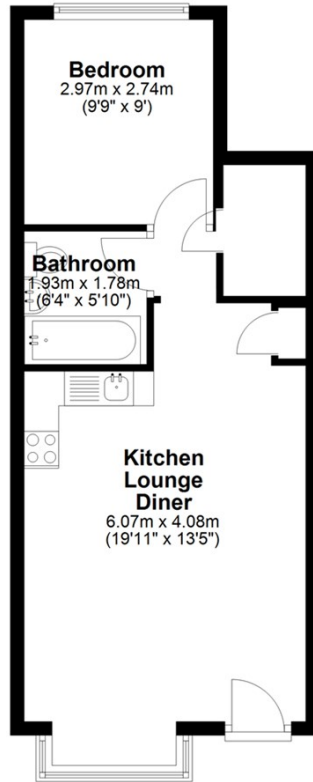
CORBY, NN17 1BB

£850 PER MONTH

Sedge Estate Agents are pleased to present this beautifully refurbished ground-floor apartment in the popular Rockingham Mews development, Corby. Finished to an excellent standard throughout, the property features a brand-new kitchen, modern bathroom, fresh decoration, and new flooring, creating a stylish and comfortable home ready to move straight into. Ideally located within walking distance of Corby town centre, railway station, and a range of retail and leisure facilities, the apartment also benefits from two allocated parking spaces. Offered at £850 PCM, this superb property is perfect for professionals or couples seeking modern, low-maintenance living in a convenient location.



Ground Floor
Approx. 39.3 sq. metres (423.3 sq. feet)



Total area: approx. 39.3 sq. metres (423.3 sq. feet)
13 Rockingham Mews



Energy Efficiency Rating		
	Current	Potential
Very energy efficient - lower running costs		
(92 plus) A		
(81-91) B		
(69-80) C		
(55-68) D		
(39-54) E		
(21-38) F		
(1-20) G		
Not energy efficient - higher running costs		
England & Wales	EU Directive 2002/91/EC	

Agents Note: Whilst every care has been taken to prepare these particulars, they are for guidance purposes only. All measurements are approximate and are for general guidance purposes only and whilst every care has been taken to ensure their accuracy, they should not be relied upon and potential buyers/tenants are advised to recheck the measurements

Spalding Office Lettings
11 The Crescent
Spalding
Lincolnshire
PE11 1AE

01775 713 888
enquiries@sedge-homes.com
www.sedge-homes.com

