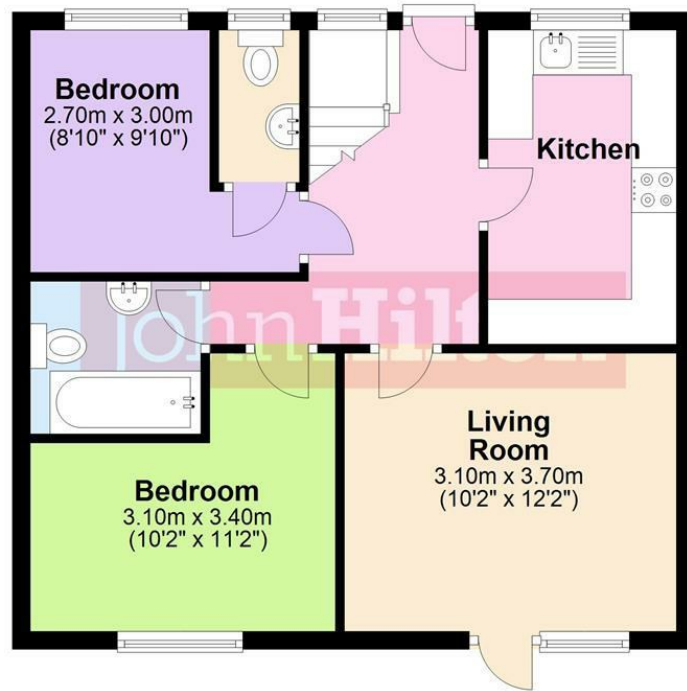


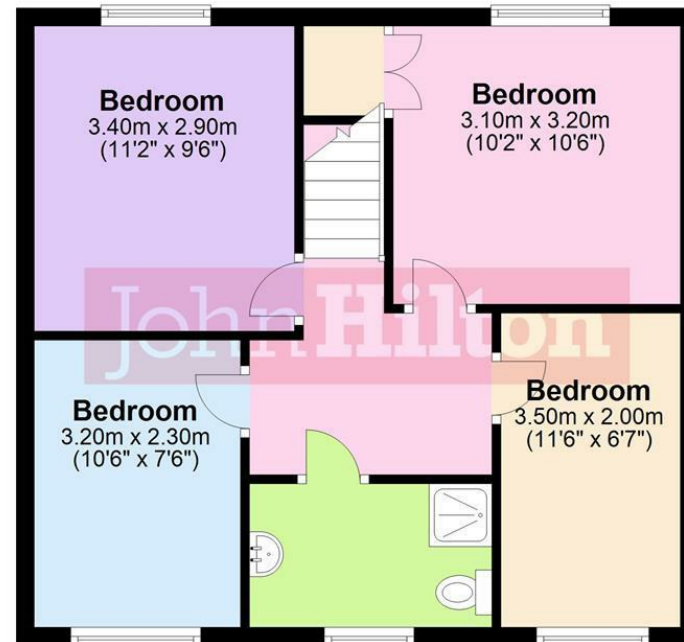
Ground Floor

Approx. 48.2 sq. metres (519.0 sq. feet)



First Floor

Approx. 48.2 sq. metres (518.9 sq. feet)



Total area: approx. 96.4 sq. metres (1037.9 sq. feet)

Total Area Approx sq ft



15 Mafeking Road, Brighton, BN2 4EL

To view, contact John Hilton:
 52 High Street, Rottingdean, BN2 7HF
 132-135 Lewes Road, Brighton, BN2 3LG
 01273 608151 or sales@johnhiltons.co.uk

PCM £3,000 PCM

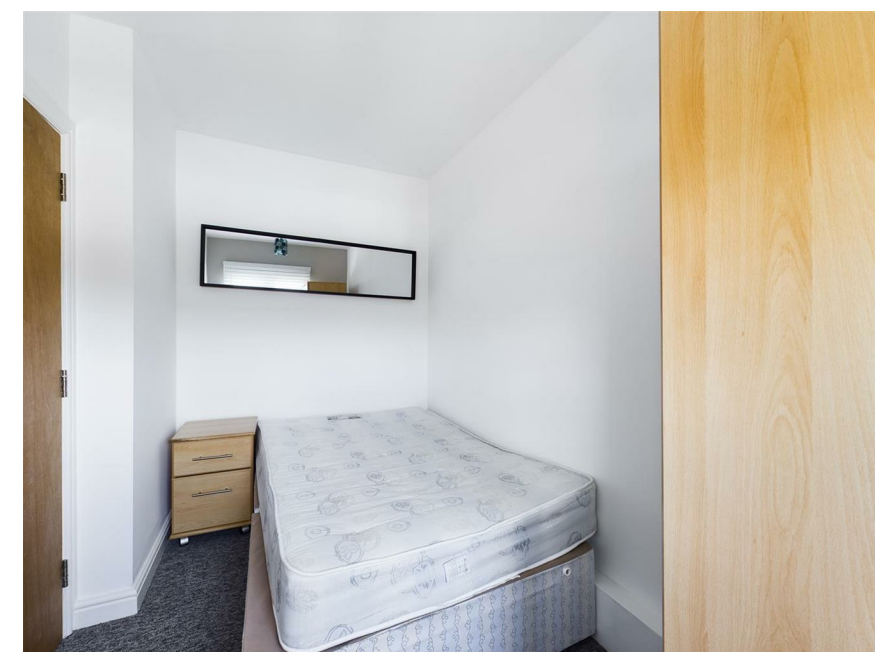
15 Mafeking Road, Brighton, BN2 4EL

A MUST SEE STUDENT 6 BED | ONLY £115.39 PPPW | LARGE GARDEN | BILLS INCLUSIVE
OPTIONS AVAILABLE

This fantastic 6-bedroom student property is a must-see, offering exceptional value at just £115.39 per person per week. Ideally located close to the ever-popular Lewes Road, the house provides easy access to universities, transport links, and local amenities. Boasting neutral décor throughout, the property features a separate living room and kitchen, perfect for both socialising and independent living.

- * ONLY £115.39 per person per week
- * 12 month contract
- * Available 21st August 2026
- * Popular location, close to the Lewes Road
- * Neutral decor
- * Separate living room and kitchen
- * Good size rear Garden
- * On street parking
- * Shower room and bathroom

* A holding deposit of £115.39 PER TENANT will be required to secure the Property which is equivalent to 1 weeks rent. Once referencing is complete the Holding Deposit will go towards the first month's rent on move in



Energy Efficiency Rating		Current	Potential
Very energy efficient - lower running costs			
(92 plus) A			
(81-91) B			83
(69-80) C		63	
(55-68) D			
(39-54) E			
(21-38) F			
(1-20) G			
Not energy efficient - higher running costs			
England & Wales		EU Directive 2002/91/EC	

Council Tax Band: C