



Davotti Court 351a Rotherhithe Street , London, SE16 5LJ £2,400 Per week

Nestled in the vibrant area of Rotherhithe, this charming two-bedroom house at 351a Rotherhithe Street offers a unique opportunity for those seeking a comfortable and inviting home in London. The property boasts a well-thought-out layout, perfect for both relaxation and entertaining.

As you step inside, you will find a warm and welcoming atmosphere that is enhanced by natural light flowing through the windows. The two bedrooms provide ample space for rest and personalisation, making it an ideal choice for small families, couples, or individuals looking for a peaceful retreat in the city.

The location is particularly appealing, with easy access to local amenities, including shops, cafes, and parks, ensuring that all your daily needs are within reach. Additionally, the excellent transport links nearby make commuting to central London and beyond a breeze, allowing you to enjoy the best of both worlds – the tranquility of suburban living and the vibrancy of city life.

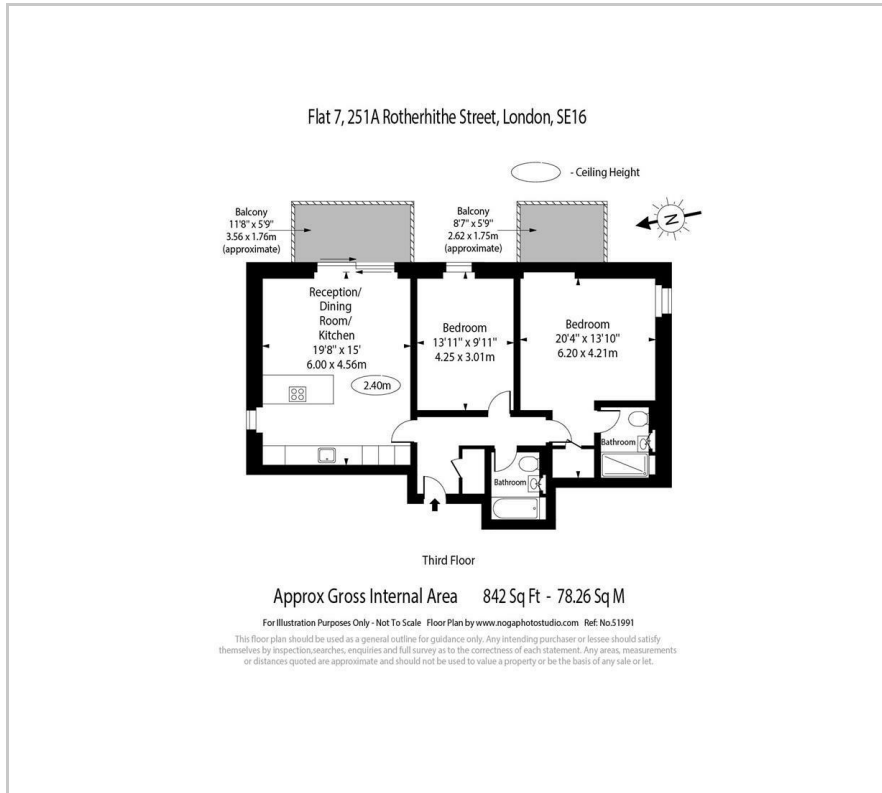
This property presents a wonderful opportunity to create a home that reflects your personal style in a sought-after area. Whether you are looking to invest or find a place to settle down, this house is certainly worth considering. Don't miss the chance to make this delightful property your own.

Viewing

Please contact us on 020 3198 4517 if you wish to arrange a viewing appointment for this property or require further information.



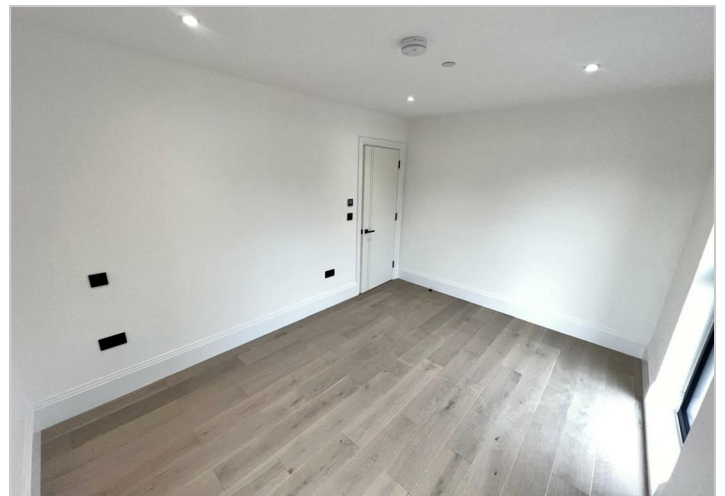
Floor Plan



Area Map



Energy Efficiency Graph



These particulars, whilst believed to be accurate are set out as a general outline only for guidance and do not constitute any part of an offer or contract. Intending purchasers should not rely on them as statements of representation of fact, but must satisfy themselves by inspection or otherwise as to their accuracy. No person in this firm's employment has the authority to make or give any representation or warranty in respect of the property.