



Heather Park, Ayr, KA7 3XL

Offers Over £100,000

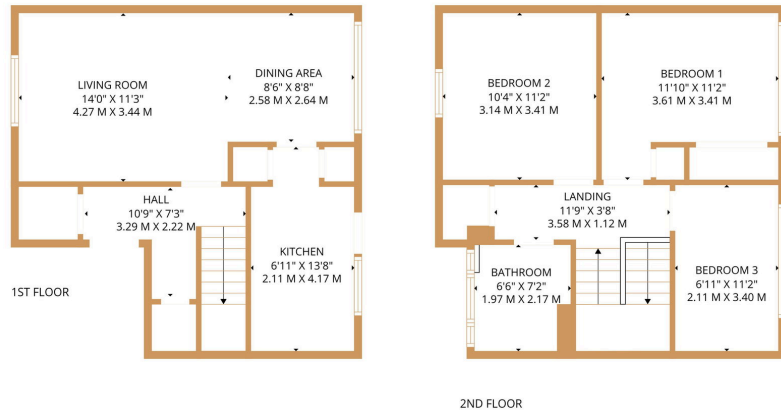
🛏 3 🚿 1 🚗 1



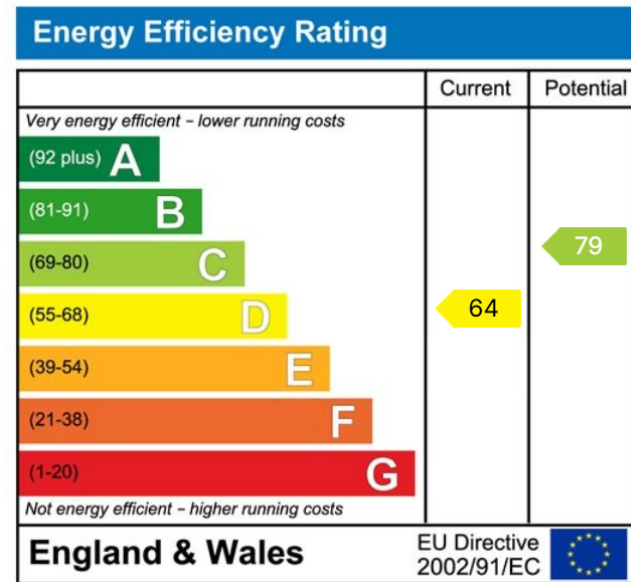
- Three-bedroom end-terraced villa
- Well-appointed fitted kitchen
- Well-proportioned bedrooms
- Popular residential area
- EPC Rating D (64)
- Bright lounge with open-plan dining area
- Modern shower room
- Private rear garden
- Close to local amenities
- Council Tax Band C



Spacious three-bedroom end-terraced villa offering well-proportioned family accommodation, conveniently positioned within an established and popular residential area of Ayr.



TOTAL: 937 sq. ft. 87 m2
 1st floor: 443 sq. ft. 41 m2, 2nd floor: 494 sq. ft. 46 m2
 EXCLUDED AREAS: WALLS: 92 sq. ft. 8 m2
SIZES AND DIMENSIONS ARE APPROXIMATE. ACTUAL MAY VARY. © FLOOR WALLS MEDIA.



01292 437 045
 office@belmontproperty.com
 24 Dalmellington Road, Ayr, KA7 2PZ

belmontproperty.com

Agents Note: Whilst every care has been taken to prepare these sales particulars, they are for guidance purposes only. All measurements are approximate and for general guidance purposes only and whilst every care has been taken to ensure their accuracy, they should not be relied upon and potential buyers are advised to recheck the measurements