



21 Stirling Close, Windsor, Berkshire, SL4 4PW
Offers in excess of £399,950

 **HORLER**

21 Stirling Close, Windsor, Berkshire, SL4 4PW

*** NO ONWARD CHAIN***

Located in Stirling Close, Windsor, this delightful three-bedroom end of terrace family home. The property has been thoughtfully extended at the rear, creating a generous living area that is perfect for family gatherings and entertaining guests. Additionally, a welcoming porch at the front enhances the home's appeal, providing a lovely entrance.



Property Summary

This residence benefits from communal parking, ensuring convenience for you and your guests, as well as a garage located in a nearby block, offering ample storage space for your belongings.

One of the standout features of this property is its prime location. It is ideally situated within a short walking distance to a variety of local amenities, making daily errands a breeze. Families will appreciate the proximity to well-regarded schools, ensuring that quality education is easily accessible. Furthermore, excellent transport links are nearby, providing easy access to surrounding areas and beyond.

This home presents a wonderful opportunity for those seeking a comfortable and convenient lifestyle in a sought-after area. With its spacious layout and excellent location, it is sure to attract interest from families and professionals alike. Do not miss the chance to make this lovely property your new home.

General Information

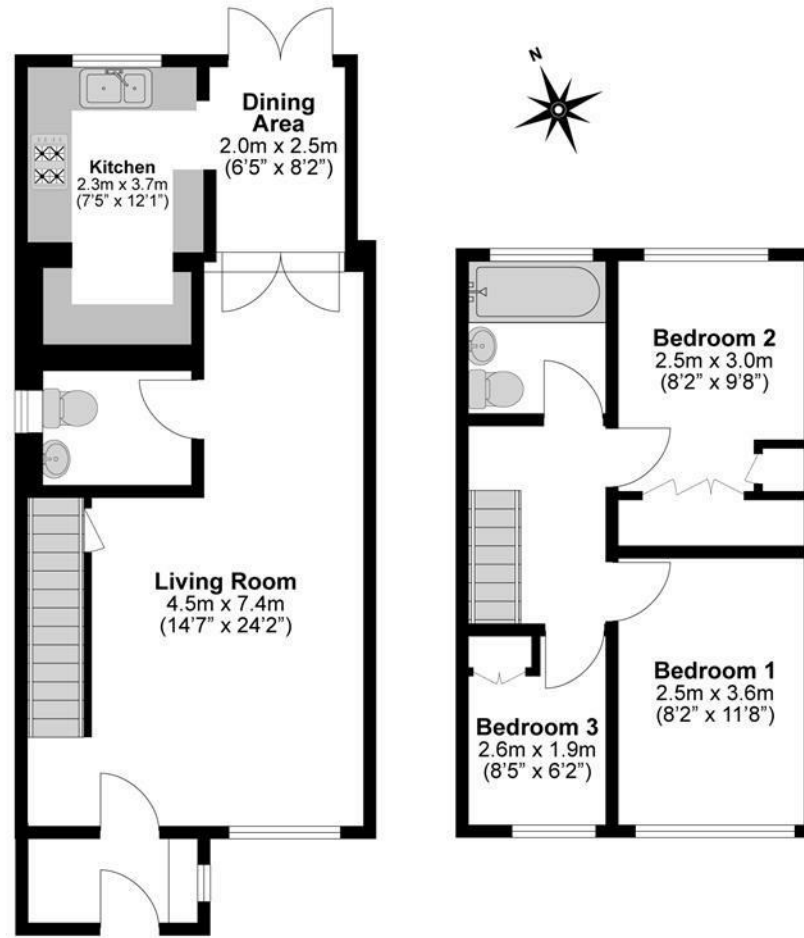
Council tax Band 'D'

Legal Note

Although these particulars are thought to be materially correct their accuracy cannot be guaranteed and they do not form part of any contract







**Illustrations are for identification purposes only,
measurements are approximate, not to scale.**