



Coopers

Coopers

Beresford Avenue, Foleshill, Coventry CV6 5JA

Guide Price £235,000

Beresford Avenue

Foleshill, Coventry

Extended kitchen diner - useful loft room with Velux window - low maintenance rear garden - three bedrooms - ideal first step onto the ladder or growing family home
Council Tax band: A

Tenure: Freehold

EPC Energy Efficiency Rating: D

EPC Environmental Impact Rating: E

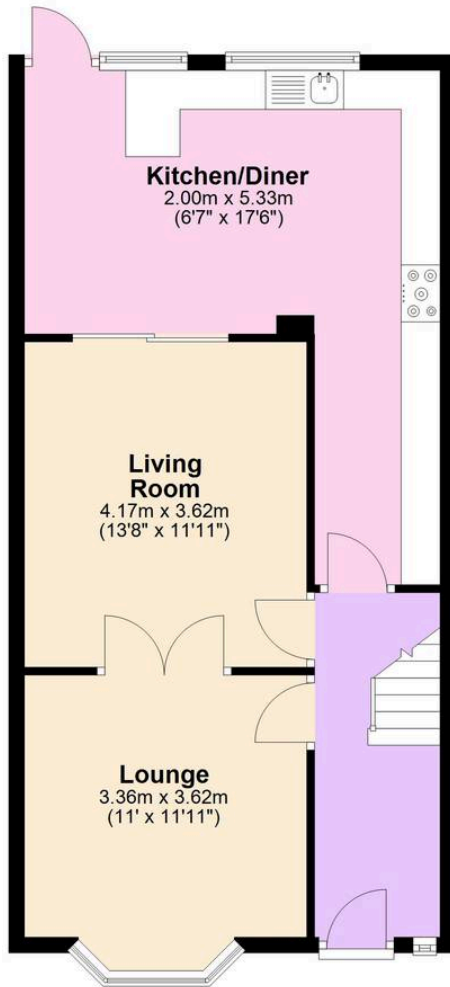
- Traditional mid terrace home
- Extended kitchen diner to the rear
- Two separate reception rooms
- Three first floor bedrooms
- Modern first floor bathroom
- Useful loft room with Velux window
- Low maintenance rear garden
- Convenient access to Coventry city centre and A444
- Ideal first time buy or family home





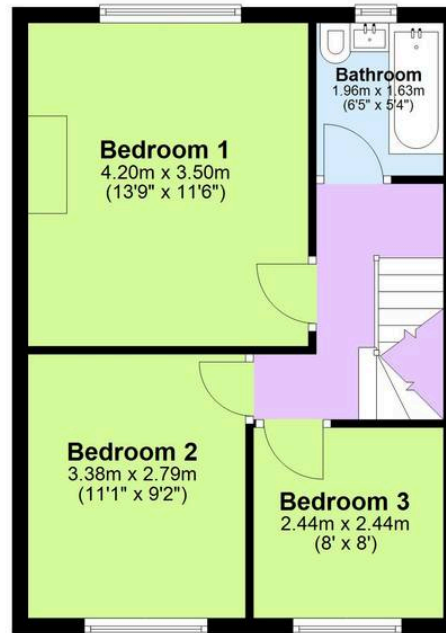
Ground Floor

Approx. 59.5 sq. metres (640.6 sq. feet)



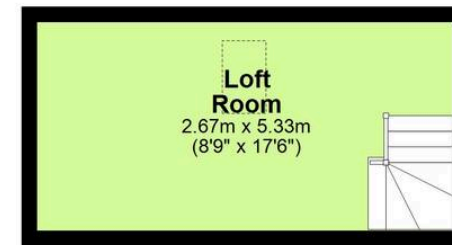
First Floor

Approx. 40.5 sq. metres (435.4 sq. feet)



Second Floor

Approx. 14.2 sq. metres (153.1 sq. feet)



*Floor plan measurements are approximate and are for illustrative purposes only. While every effort is made to ensure accuracy, no responsibility is taken for any error, omission, or misstatement. Do not scale from this plan.
Plan produced using PlanUp.□□

Coopers Estate Agents

Coopers, 22 New Union Street - CV1 2HN



Coopers Chartered Surveyors Ltd, 22 New Union Street, Coventry, West Midlands

CV1 2HN, 024 7655 2841, sales@coopers-cov.com. Company Registration

Number: 6725089 / VAT number: 940 3555 34

024 7655 2841 • sales@coopersestateagents.com • www.coopersestateagents.com/