

SW19

it's all in the postcode...



Victory Road Mews
Wimbledon

Monthly Rental Of £1,650

- Two double bedrooms
- Open plan living / kitchen
- Excellent transport links
- Furnished
- Available from 16th March
- Council tax Band B
- EPC Rating D



020 8544 2828

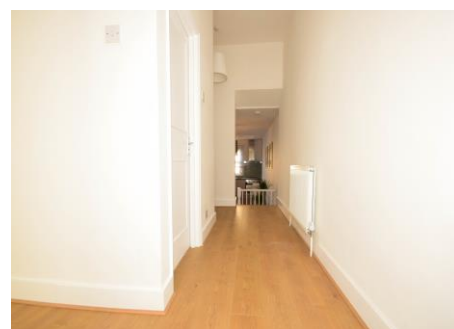
Wimbledon: Wimbledon Park: Colliers Wood

www.SW19.com

SW19 Estate Agents Ltd. Is registered in England & Wales No. 05508737

it's all in the postcode...

Spacious two double bedroom apartment in a superb location for South Wimbledon tube station. This property boasts an open plan kitchen / living area and two good sized double bedrooms. Bathroom suite in white with shower over bath. Gas central heated and double glazed throughout. Furnished and available from 16th March.



020 8544 2828
Wimbledon: Wimbledon Park: Colliers Wood
www.SW19.com
SW19 Estate Agents Ltd. Is registered in England & Wales No. 05508737

'it's all in the postcode...'

These particulars are for guidance only and should not be relied upon as a statement or representation of fact. All measurements given are approximate only and should not be relied upon for ordering carpets, equipment etc. Purchasers should satisfy themselves by inspection or otherwise as to the accuracy of the statements contained within. Neither SW19 estate agents ltd or related companies or their employees can confirm structural conditions of the property or that any appliances or other facilities are in working order. Purchasers are strongly recommended to arrange their own survey.

020 8544 2828

Wimbledon: Wimbledon Park: Colliers Wood

www.SW19.com

SW19 Estate Agents Ltd. Is registered in England & Wales No. 05508737

'it's all in the postcode...'