



King Street
Covent Garden, WC2E

CHESTERTONS





An impressive one bedroom apartment located in the heart of Covent Garden, situated a stone's throw away from the Piazza. The apartment has been refurbished throughout to a very high standard and enjoys an abundance of natural light. VIDEO VIEWING

- Iconic Covent Garden location
- Finished to an excellent standard throughout
- High ceilings
- Wooden flooring throughout
- Fibre optic Broadband included in the rent
- Newly refurbished

£3,250 pcm

Additional tenant charges apply (fees apply to non-AST tenancies only)

Tenancy Agreement Fee: £300

References per Tenant/Guarantor: £60

Inventory check (approx. £100 – £250 inc. VAT)

chestertons.co.uk/property-to-rent/applicable-fees

Energy Efficiency Rating		Current	Potential
90-100	A		
81-89	B		
69-80	C		
55-68	D	66	67
49-54	E		
45-48	F		
1-44	G		

Not energy efficient - higher running costs

England, Scotland & Wales EU Directive 2002/91/EC

Minimum Term: 2 months
Deposit Required: £3,750.00
Local Authority: City Of Westminster
Council Tax Band: F
EPC Rating: E
Furnished

Chestertons Covent Garden Lettings

196 Shaftesbury Avenue

Covent Garden

London

WC2H 8JF

coventgarden@chestertons.co.uk

02030408400

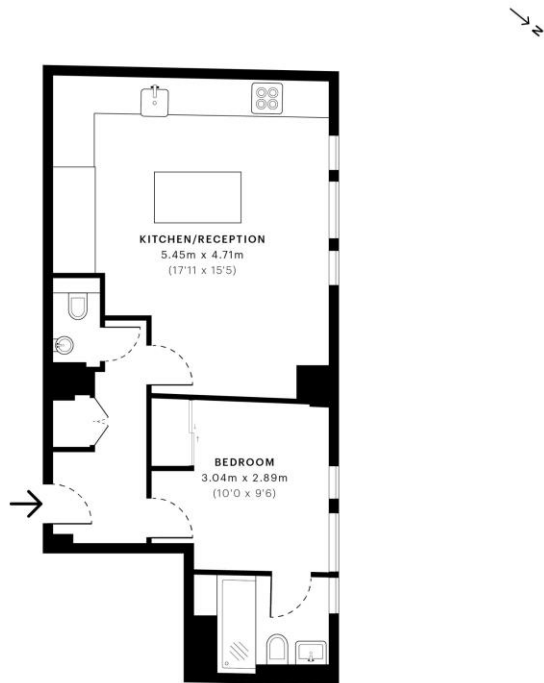


King Street, WC2E

CAPTURE DATE: 05/01/2022 LABER SCAN POINTS: 987,656

GROSS INTERNAL AREA

42.31 sqm / 455.42 sqft



- First Floor

 **GROSS INTERNAL AREA (GIA)**
The footprint of the property
42.31 sqm / 455.42 sqft

 **NET INTERNAL AREA (NIA)**
Excludes walls and external features
Includes washrooms, restricted head height
40.00 sqm / 430.56 sqft

 **EXTERNAL STRUCTURAL FEATURES**
Balconies, terraces, verandas etc.
0.00 sqm / 0.00 sqft

 **RESTRICTED HEAD HEIGHT**
Limited use area under 1.9m
0.00 sqm / 0.00 sqft



Spec Verified floor plans are produced in accordance with Royal Institution of Chartered Surveyors' Property Measurement Standards. Plots and gardens are illustrative only and excluded from all area calculations. Due to rounding, numbers may not add up precisely. All measurements shown for the individual room lengths and widths are the maximum points of measurements captured in the scan.

IPMS 2B RESIDENTIAL 42.04 sqm / 453.87 sqft
IPMS 3C RESIDENTIAL 40.98 sqm / 441.11 sqft

SPEC ID: 61d42d56f9ee1e0de1191da2

Chesterton Global Ltd trading as Chestertons for themselves and for the vendor of this property whose agents they are, give notice that (i) these particulars do not constitute any part of an offer or contract, (ii) all statements contained within these particulars are made without responsibility on the part of Chestertons or the vendor, (iii) whilst made in good faith, none of the statements contained within these particulars are to be relied upon as a statement or representation of fact, (iv) any intending purchasers must satisfy themselves by inspection or otherwise as to the correctness of each of the statements contained within these particulars, (v) the vendor does not make or give either Chestertons or any person in their employment any authority to make or give representation or warranty whatsoever in relation to this property. Wide angle lenses may be used. ©Copyright Chestertons | Chesterton Global Ltd | Registered Office 40 Connaught Street, Hyde Park, London W2 2AB Registered Company Number 05334580.



This paper is
100% recyclable