



96 Fairford Road

Tilehurst, RG31 6QP

Guide price £450,000 Freehold



DESCRIPTION

VP - NO ONWARD CHAIN & 360 VIRTUAL TOUR

Presented to the market is this extended three bedroom semi detached corner plot house with off road parking, garage and easy access to local schools, amenities, bus routes and parks. The property comprises entrance porch, WC, extended living room, separate dining room and an extended kitchen/breakfast room. On the first floor there are three bedrooms and a refitted shower room. Externally the garden has direct access into the garage and side access gate. Internal viewings are highly recommended.

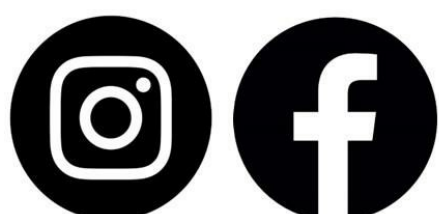
Council tax band - D

SUMMARY OF ACCOMMODATION

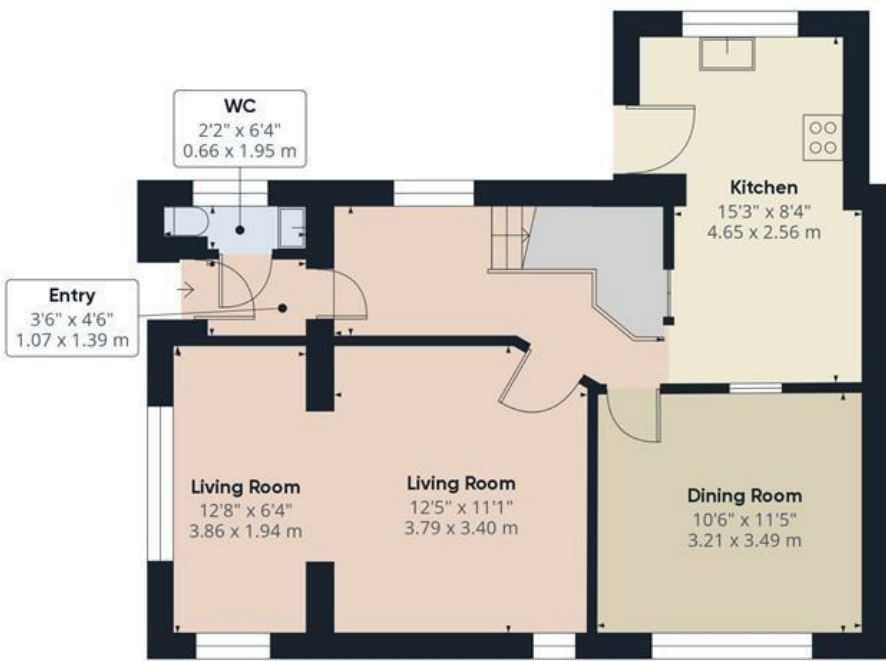
- NO ONWARD CHAIN
- THREE BEDROOMS
- SEMI DETACHED HOUSE
- GARAGE
- OFF ROAD PARKING
- CORNER PLOT
- DOWNSTAIRS WC
- REFITTED SHOWER ROOM
- REFITTED KITCHEN
- 360 VIRTUAL TOUR



Get Social



VillageProperties.co.uk



Ground Floor Building 1



Floor 1 Building 1



Ground Floor Building 2



Approximate total area⁽¹⁾

1187.67 ft²

110.34 m²

(1) Excluding balconies and terraces

While every attempt has been made to ensure accuracy, all measurements are approximate, not to scale. This floor plan is for illustrative purposes only.

Calculations were based on RICS IPMS 3C standard. Please note that calculations were adjusted by a third party and therefore may not comply with RICS IPMS 3C.

GIRAFFE360