



Gelligroes Mill, offers in excess of £190,000

- Cash Buyers
- 17th Century watermill
- Detached Mill house and barn
- Grade II listed
- Fantastic potential
- Superb and rare opportunity
- EPC Rating: E



 5  1  3



About the property

This exceptional and exceedingly rare opportunity offers the chance to acquire a distinguished detached 17th-century Grade II listed residence, accompanied by a charming barn conversion-formerly a candle workshop-and an impressive separate Grade II listed water mill. Steeped in history, the estate is celebrated as the former home of Artie Moore, the pioneering wireless operator who, in 1912, famously intercepted the SOS signal from the RMS Titanic.

While requiring sympathetic restoration and subject to existing leasehold restrictions, the property presents outstanding potential for both residential and commercial use. The principal house features a generous reception room, a comfortable sitting room, a main kitchen, a secondary kitchen area, and a study leading into the adjoining workshop. The workshop itself includes a utility area, two WCs, and a mezzanine level, providing excellent versatility. To the first floor, five well-proportioned bedrooms and a family bathroom complete the accommodation.

The separate Mill building is arranged over two floors, comprising two ground-floor rooms and two first-floor rooms, with the original mill workings remaining intact, offering a unique heritage feature. The estate has a picturesque setting with surrounding land providing ample scope for further enhancement subject to the necessary consents.



Accommodation

Location

Positioned within the tranquil setting of Lower Gelligroes, the property enjoys convenient access to local amenities, with a nearby bus stop and the village of Pontllanfraith offering schools, shops, and everyday services. A Sainsbury's supermarket and excellent transport links further enhance the accessibility of this historically significant and highly desirable property.

Living Room/Dining Room

22' x 14' (6.71m x 4.27m)

Sitting Room

12' 8" x 14' 4" (3.86m x 4.37m)

Kitchen Area

14' 2" x 9' 10" (4.32m x 3.00m)

2nd Kitchen

10' 2" x 7' 11" (3.10m x 2.41m)

Study

7' 11" x 7' 6" (2.41m x 2.29m)

Workshop

21' 4" x 15' 4" (6.50m x 4.67m)

Second Room

12' 3" x 14' 11" (3.73m x 4.55m)

Upstairs Area

18' 10" approx x 15' 8" approx (5.74m approx x 4.78m approx)

Utility Area

Wc

Wc

Main Property First Floor

Landing

Bedroom One

14' 11" x 14' 6" (4.55m x 4.42m)

Bedroom Two

13' 9" x 9' (4.19m x 2.74m)

Bedroom Three

01495 231199

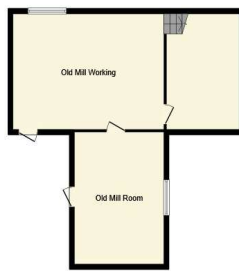
blackwood@peteralan.co.uk

Floorplan

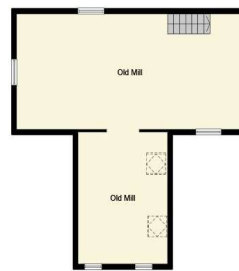


Ground Floor

First Floor



Outbuilding Ground Floor



Outbuilding First Floor

This floor plan is for illustrative purposes only. It is not drawn to scale. Any measurements, floor areas (including any total floor area), openings and orientation are approximate. No details are guaranteed, they cannot be relied upon for any purpose and they do not form part of any agreement. No liability is taken for any error, omission or misstatement. A party must rely upon its own inspection(s). Powered by www.focalagent.com

Important Information

Note while we endeavour to make our sales details accurate and reliable, if there is any point which is of particular interest to you, please contact the office and we will be pleased to confirm the position for you. We have not personally tested any apparatus, equipment, fixtures, fittings or services and cannot verify they are in working order or fit for their purposes. Nothing in these particulars is intended to indicate that carpets or curtains, furnishings or fittings, electrical goods (whether wired or not). Gas fires or light fittings or any other fixtures not expressly included form part of the property offered for sale. This computer generated Floorplan, if applicable, is intended as a general guide to the layout and design of the property. It is not to scale and should not be relied upon for dimensions. Tenure: We cannot confirm the tenure of the property as we have not had access to the legal documents. The buyer is advised to obtain verification from their solicitor or surveyor.

Peter Alan Limited is registered in England and Wales under company number 2073153, Registered Office is Cumbria House, 16-20 Hockliffe Street, Leighton Buzzard, Bedfordshire, LU7 1GN. VAT Registration Number is 500 2481 05. For activities relating to regulated mortgages and non-investment insurance contracts, Peter Alan Limited is an appointed representative of Connells Limited which is authorised and regulated by the Financial Conduct Authority. Connells Limited's Financial Services Register number is 302221. Most buy-to-let

