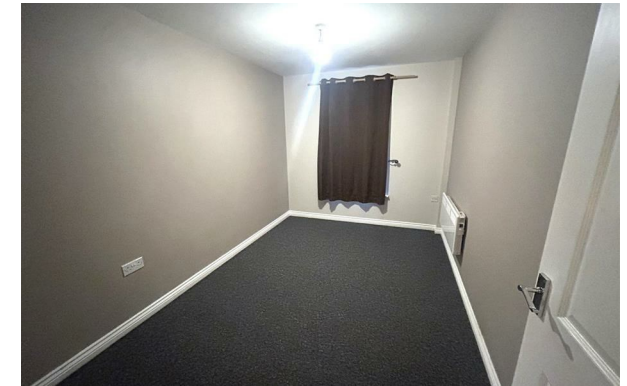


THE HOME AGENCY

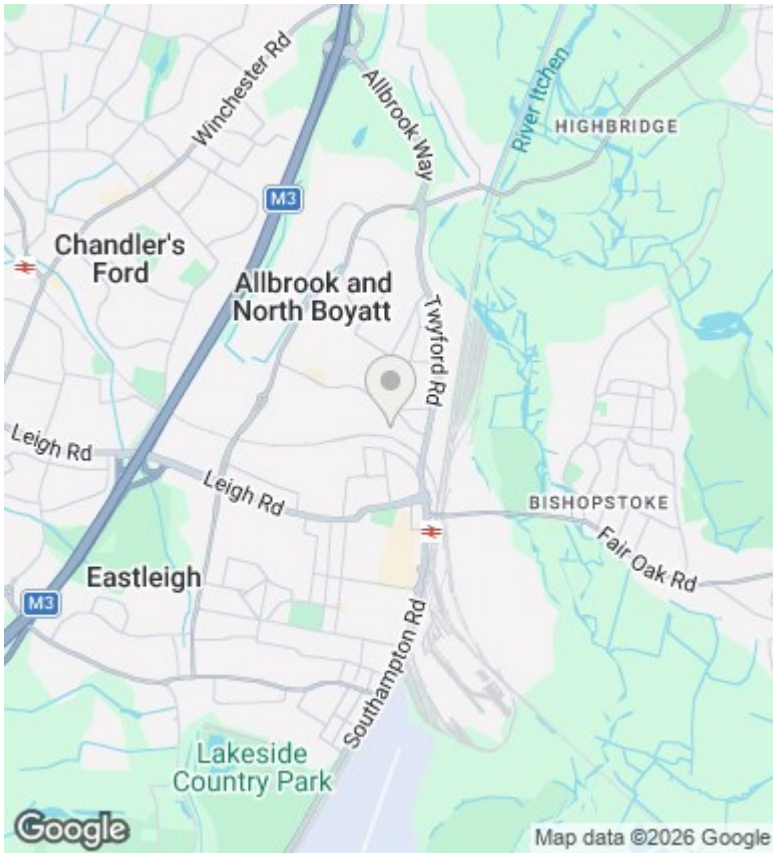
'Passion for property.'



Flat 12, Rossetti Court Byron Road, Eastleigh, Hampshire, SO50 4FL

£1,250 Per Calendar Month

- Purpose Built Apartment
- Modern Kitchen
- Allocated Off Road Parking
- Sought After Location
- Large Lounge
- Modern Bathroom
- Two Bedrooms
- Master Bedroom En suite
- Ground Floor
- Electric Heating



Directions

Viewings

Viewings by arrangement only. Call 02380 632632 to make an appointment.

Council Tax Band

B

EPC Rating:

B

Energy Efficiency Rating		Current	Potential
<i>Very energy efficient - lower running costs</i>			
(92 plus) A			
(81-91) B		82	82
(69-80) C			
(55-68) D			
(39-54) E			
(21-38) F			
(1-20) G			
<i>Not energy efficient - higher running costs</i>			
England & Wales		EU Directive 2002/91/EC	