



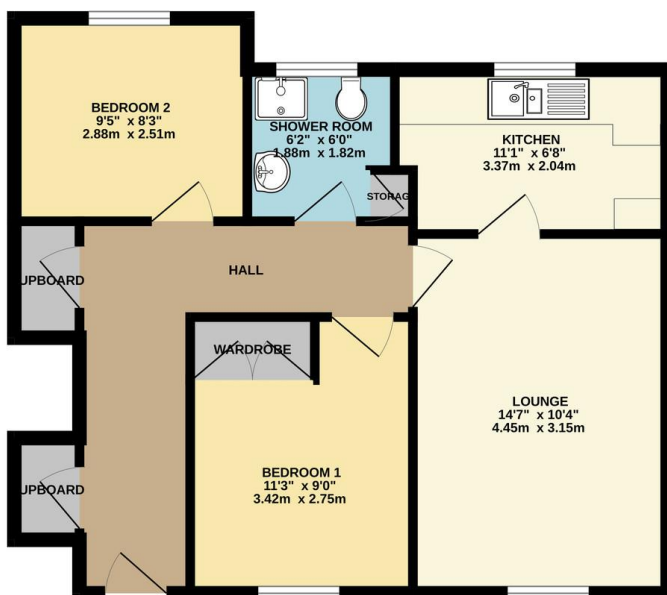
## FOR SALE

2 Bed Ground Floor Flat in Jasmine Court, Wigston LE18 4TR  
Offers Over £80,000

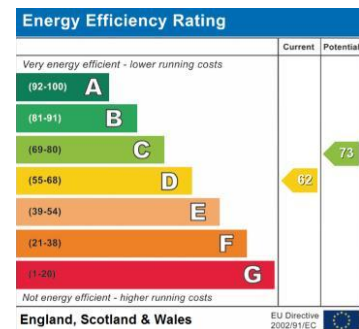
\*\*\* Ground Floor \*\*\* A well-presented and spacious two-bedroom over 55's ground floor flat, ideally located in the highly popular Jasmine Court development, South Wigston. Offered chain free, set within landscaped gardens, and benefits from off-road parking on a first come, first served basis. A rare opportunity not to be missed. Contact Phillips George to arrange your viewing.



GROUND FLOOR  
567 sq.ft. (52.6 sq.m.) approx.



TOTAL FLOOR AREA: 567 sq ft. (52.6 sq.m.) approx.  
Whilst every attempt has been made to ensure the accuracy of the floorplan contained here, measurements of doors, windows, rooms and any other items are approximate and no responsibility is taken for any error, omission or mis-statement. This plan is for illustrative purposes only and should be used as such by any prospective purchaser. The services, systems and appliances shown have not been tested and no guarantee as to their operability or efficiency can be given.  
Made with Metropix (2020)



- Over 55's Development
- Ground Floor
- Two Bedrooms
- Popular Location
- Chain Free
- Neatly Presented
- Shower Room
- Allocated Parking

**Agents Note:** Whilst every care has been taken to prepare these sales particulars, they are for guidance purposes only. All measurements are approximate are for general guidance purposes only and whilst every care has been taken to ensure their accuracy, they should not be relied upon and potential buyers are advised to recheck the measurements.

