



St. Philip Street
London, SW8

CHESTERTONS





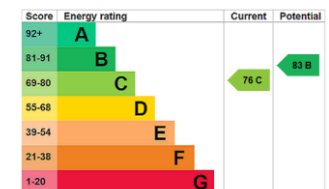
An elegantly presented and bright period two bedroom flat set in the sought after Diamond Conservation area moments from Battersea Park

The property has been lovingly finished throughout and offers generous living accommodation and plenty of storage. The property comprises a separate kitchen and living area with plenty of storage and worktop space, a quiet master bedroom with large sash window that lets in lots of natural light, a second double bedroom with built in wardrobes, a contemporary bathroom which boasts a roll top bath with rainfall shower over.

The property is situated a short walk from Battersea Park and Queenstown Road overground stations. Whilst also benefitting from Battersea Power Stations amenities and northern line tube station.

- Two Bedroom
- Diamond Conservation area
- Period features
- Separate Kitchen
- 656sq ft

Asking Price £625,000

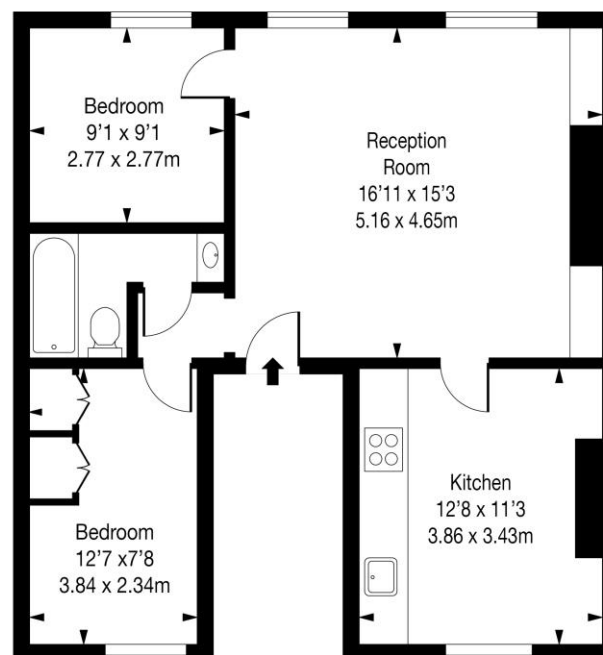


Tenure: Share of Freehold
Service Charge: TBC
Ground Rent: TBC
Local Authority: London Borough of Wandsworth
Council Tax Band: D

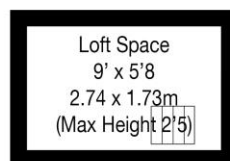
Chestertons Battersea Park & Nine Elms Sales

62-64 Battersea Bridge Road
 London
 SW11 3AG
 batterseapark@chestertons.co.uk
 0203 040 8700
 chestertons.co.uk

St Philip Street, SW8



First Floor



Loft



Approx Gross Internal Area

656 Sq Ft - 60.93 Sq M

Includes Limited Use Area - 12 Sq Ft

Excludes Loft Space - 51 Sq Ft

Drawn in Accordance with IPMS 3B: Residential

Illustration For Identification Purposes Only - Not to Scale

www.homespacestudio.co.uk - Ref. No. 53266



Chesterton UK Services Limited trading as Chestertons for themselves and for the vendor of this property whose agents they are, give notice that (i) these particulars do not constitute any part of an offer or contract, (ii) all statements contained within these particulars are made without responsibility on the part of Chestertons or the vendor, (iii) whilst made in good faith, none of the statements contained within these particulars are to be relied upon as a statement or representation of fact, (iv) any intending purchasers must satisfy themselves by inspection or otherwise as to the correctness of each of the statements contained within these particulars, (v) the vendor does not make or give either Chestertons or any person in their employment any authority to make or give representation or warranty whatsoever in relation to this property. Wide angle lenses may be used. ©Copyright Chestertons | Chesterton UK Services Limited | Registered Office 40 Connaught Street, Hyde Park, London W2 2AB Registered Company Number 05334580.



This paper is
100% recyclable