



**Little Heath, SE7**

**£950,000**

**Dexters**



## Little Heath, SE7

This substantial five-bedroom detached home offers exceptional family living with generous proportions, high-quality finishes, and a beautifully landscaped south-east facing garden.

Thoughtfully extended to the rear, the home features a stunning open-plan reception room bathed in natural light, thanks to expansive bi-fold doors that seamlessly connect the indoor space with the garden. The separate modern kitchen, recently updated just a few years ago, combines style and functionality with sleek cabinetry and ample workspace. The layout offers versatility, beginning with a grand entrance hall leading to a formal front reception room, ideal as a lounge, media room, or home office.

Upstairs, the first floor hosts three generous double bedrooms, including the main bedroom with en suite, while the top floor provides two further spacious doubles and extensive eaves storage. To the front, a private driveway provides off-street parking for up to three vehicles.

Little Heath is a highly desirable area situated within close proximity of Charlton Village, parks, popular primary schools and excellent transport links into central London. The Elizabeth Line and the DLR at Woolwich Arsenal are just a few minutes bus journey away. The O2 at North Greenwich, London City Airport, Greenwich Park and the Thames Barrier are all within easy reach.

### Features

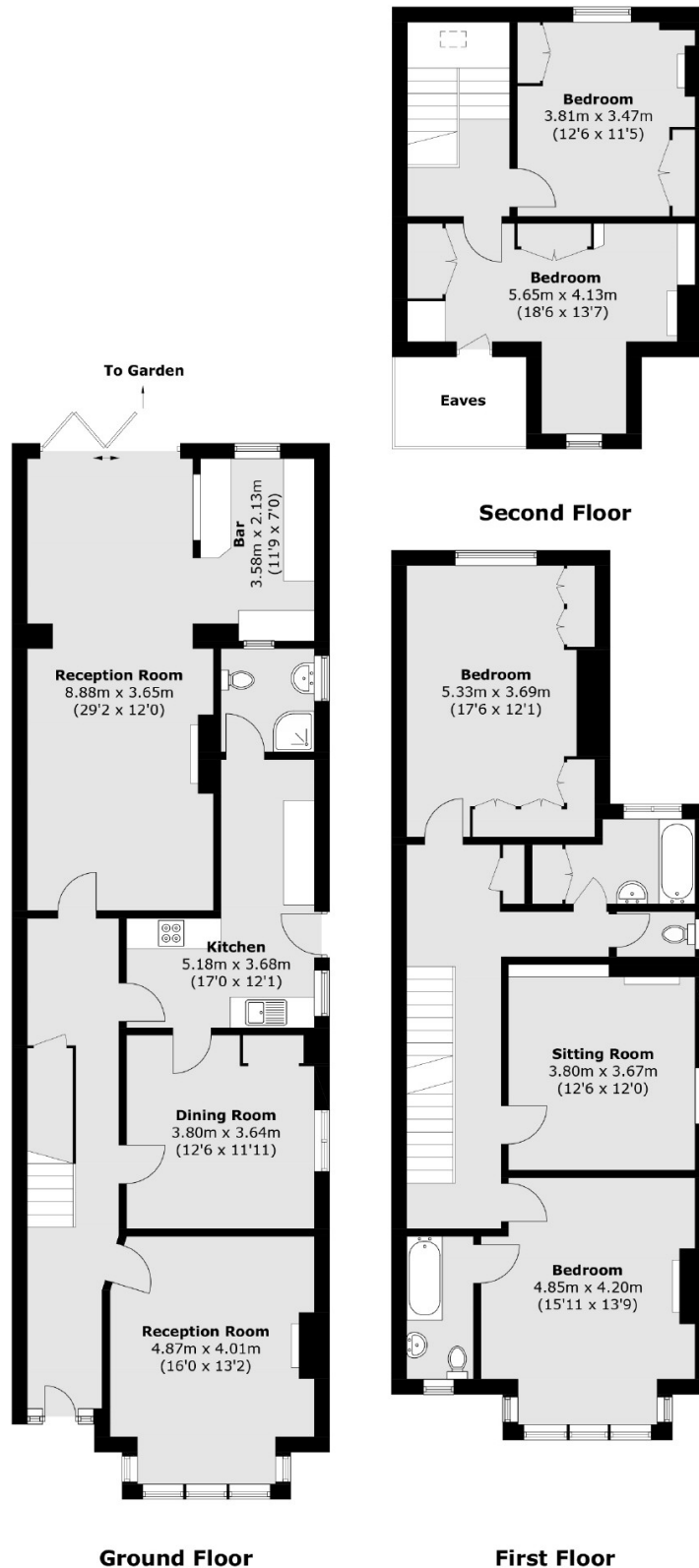
- Detached
- Five Bedrooms
- South East Facing Garden
- Off Street Parking
- En Suite Bathroom
- Popular Road







# Little Heath, London, SE7



Total area (approx.): 232.2 sq. m (2,499.4 sq. ft)  
(Excluding Eaves)