



**ONE MONTH  
FREE RENT**



**£250 VOUCHER  
OF YOUR CHOICE**



**Deposit free  
OPTIONS AVAILABLE**

## Spring Mill, Rochdale, OL12

**£1,340 Per Month**

\*One Month's Rent Free & £250 Voucher\*

\*Deposit Free Option Available\*

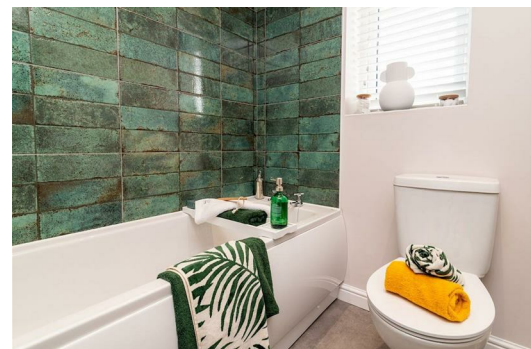
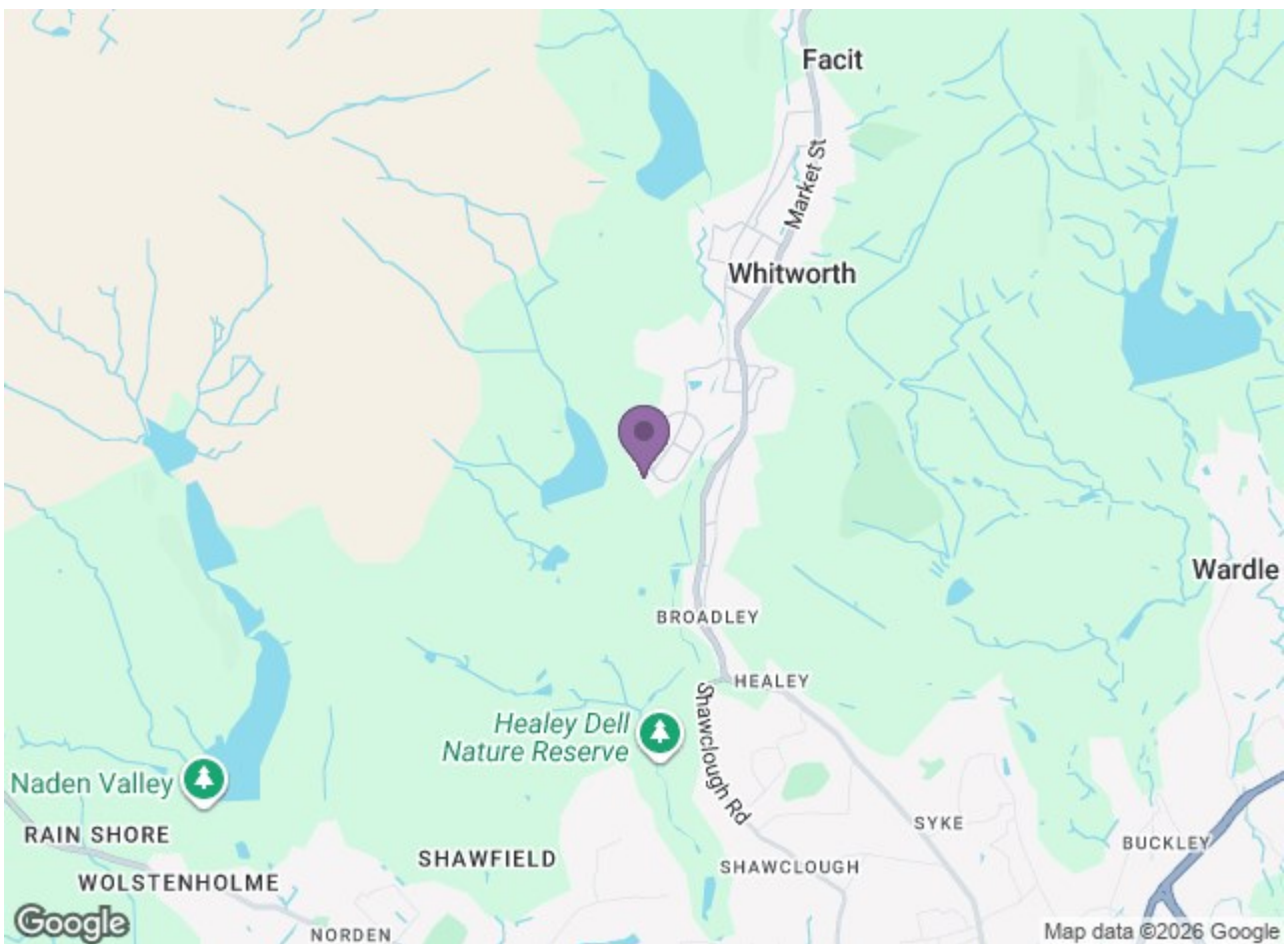
Explore the beauty of Spring Mill, an enchanting development of 2, 3, and 4-bedroom homes nestled in Whitworth, Lancashire.

Introducing The Kilkenny, a beautiful three bedroom detached home available for rent, offering the perfect blend of modernity and comfort. Prepare to be charmed by its thoughtfully designed living spaces and exceptional features.

As soon as you step inside, you will be greeted by a bright and inviting living room, showcasing a stunning exposed staircase that adds a touch of elegance to the space. Through the next room, there's an open-plan kitchen-diner, providing a versatile and flexible area to get your cook on. Open the French doors and seamlessly connect indoor and outdoor living as you step out onto the garden, creating a harmonious flow of space.

Upstairs, you'll discover two double bedrooms that offer ample space and comfort for rest and relaxation. Additionally, a versatile third bedroom awaits, which can be adapted to suit your lifestyle - whether that be an additional bedroom, nursery, dressing room or office... the possibilities are endless! The upper level also features a family bathroom, complete with exquisite Porcelanosa tiling, adding a touch of sophistication to your daily routines.





Energy Efficiency Rating		Environmental Impact (CO <sub>2</sub> ) Rating	
Current	Target	Current	Target
Energy A	Energy D	Climate A	Climate D
Energy B	Energy C	Climate B	Climate C
Energy C	Energy B	Climate C	Climate B
Energy D	Energy A	Climate D	Climate A
Energy E	Energy F	Climate E	Climate E
Energy F	Energy G	Climate F	Climate F
Energy G	Energy G	Climate G	Climate G

Energy Efficiency Rating: 83 (Current), 88 (Target)  
 Environmental Impact (CO<sub>2</sub>) Rating: Climate C (Current), Climate B (Target)