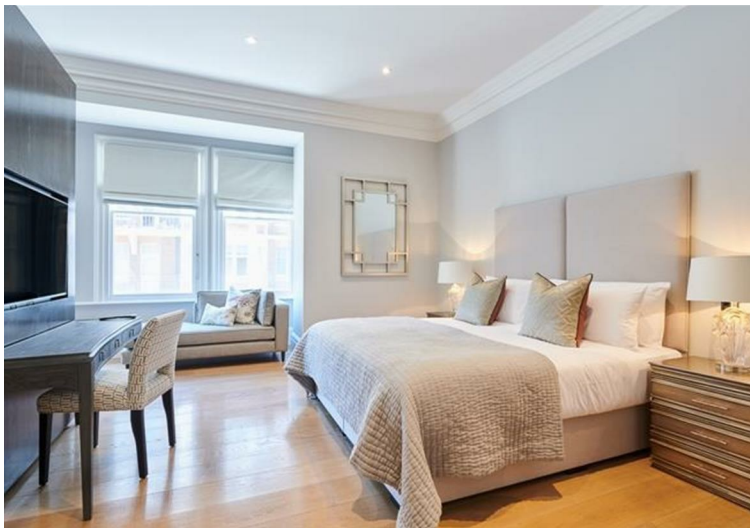
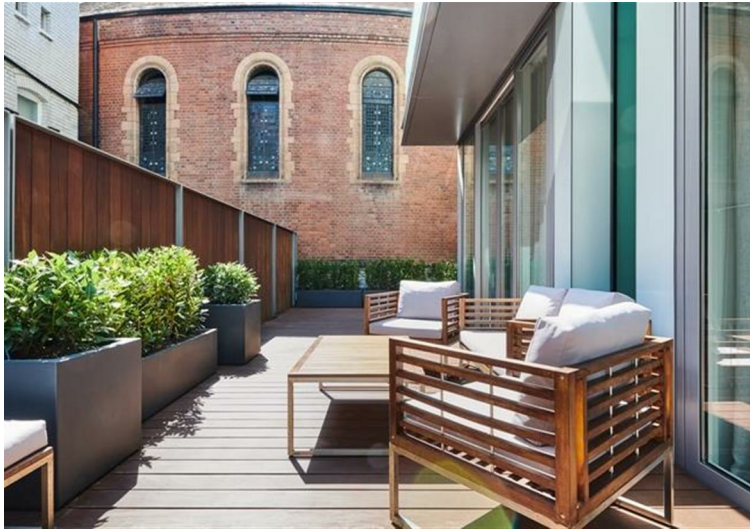
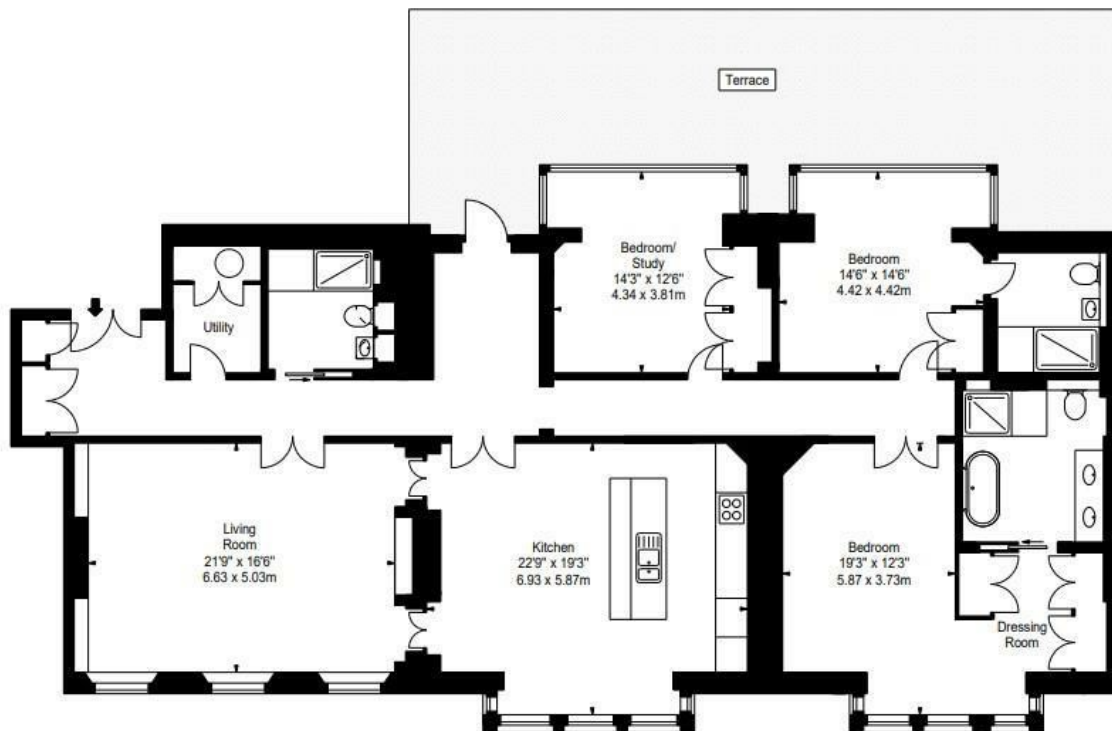




Duke Street, London, W1 £6,200 Per Week Furnished/unfurnished





FIRST FLOOR

<p>Property Details:</p> <p>FLAT 1.01 65 DUKE STREET LONDON W1</p>	<p>Surveyed and Drawn By:</p> <p>BKR</p> <p>Hideaway Work Space 1 Empire Mews London SW16 2BF</p>
<p>Plans Drawn: 13.08.2018</p>	<p>Tel: 0345 257 2023 info@bkrfloorplans.co.uk www.bkrfloorplans.co.uk © BKR 2018</p>

APPROX. GROSS INTERNAL AREA *
 APARTMENT
 2503 Ft² - 232.53 M²

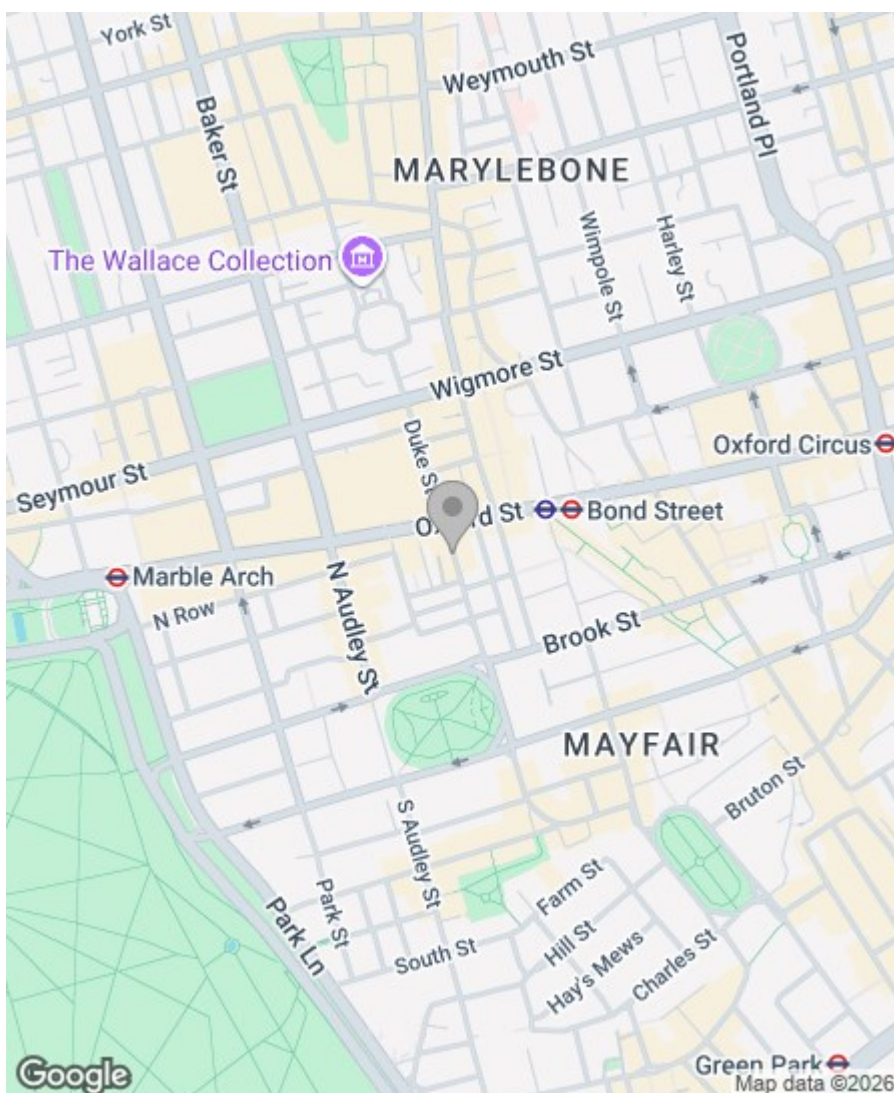
APPROX. GROSS FLOOR AREA *
 TERRACE
 649 Ft² - 60.29 M²

Property Overview

Location	, W1K
Price	£6,200 Per Week
Bedrooms	3
Bathrooms	3
Receptions	1
Council	
Tax Band	H
Furnishing	Furnished/unfurnished

Key Features

- Luxury Apartment
- Passenger Lift
- Moments from Oxford Street
- Comfort Cooling
- Close to Tube



Energy Efficiency Rating

	Current	Potential
<i>Very energy efficient - lower running costs</i>		
(92 plus) A		
(81-91) B		
(69-80) C		
(55-68) D		
(39-54) E		
(21-38) F		
(1-20) G		
<i>Not energy efficient - higher running costs</i>		
	74	84
England & Wales	EU Directive 2002/91/EC	

Greenstones Estates Ltd
Registered in England & Wales
Registered Office:
5 West Court, Enterprise Road,
Maidstone, Kent ME15 6JD

Company Registered number
03513585

Trading address
83 Boundary Road, St John's Wood,
London NW8 0RG

We are members of



IMPORTANT NOTICE: All of the information is intended only as a guide to a prospective purchaser and does not constitute any part of an offer or contract. Any measurements or distances referred to herein are approximate only. Any information contained herein (whether in the text, plans or photographs) is given in good faith and cannot be relied upon as being a statement or representation of fact. Should you proceed with the purchase of the property, your solicitor must verify these details. We have not carried out a detailed survey nor tested the services, appliances and specific fittings. In accordance with current legislation we would advise you that the measurements on these particulars are imperial. The formula for conversion to metric is as follows:- 1' (one foot) = 30.4cm (centimetres), 1m (one metre) = 3'29 (feet).

