



ISIS STREET, SW18 3QL

Offers Over £600,000

A superb example of a well-presented first-floor period maisonette offering two bedrooms and the benefit of a private rear garden. The property is situated on a highly sought-after street in the heart of Earlsfield, within easy reach of the mainline station and an excellent selection of local amenities. The accommodation comprises a bright front reception room with bay window and attractive feature fireplace, a kitchen/breakfast room, bathroom, and two bedrooms (one double and one single). To the rear, the property enjoys a private garden. The property also benefits from a substantial loft space, providing excellent potential to create additional living accommodation, subject to the usual planning consents. Offered with no onward chain. Share of Freehold. EPC Rating: D. Council Tax Band: D. Please see the virtual tour provided: <https://my.matterport.com/show/?m=ZgvobScJYz5>

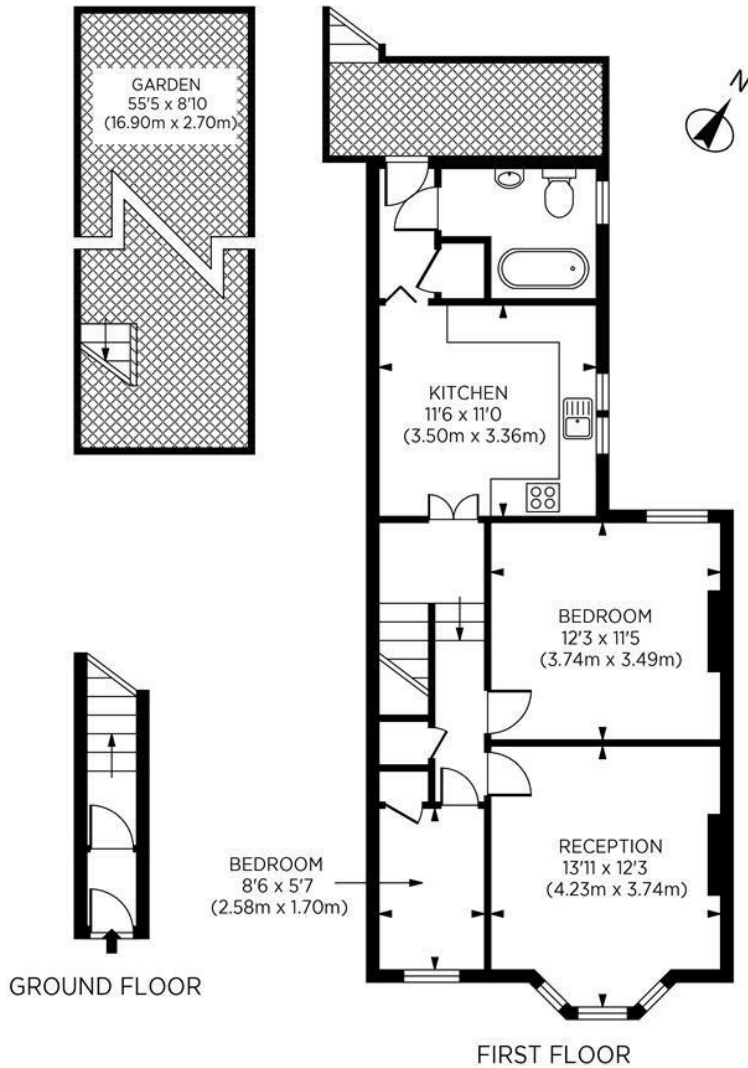


www.maalems.co.uk

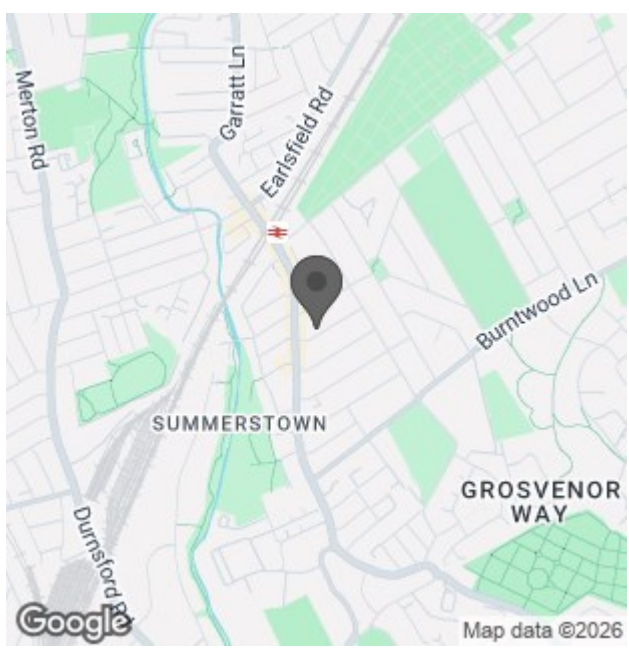
Earlsfield & Wandsworth Office
344 Garratt Lane
Earlsfield, London SW18 4EL
T: 020 8875 9200
earlsfield@maalems.co.uk

Registered in England & Wales No. 5585458





Isis Street, SW18
 Gross Internal Area 689 sq ft/ 64 sq metres
 ©photosandfloorplans.com



Energy Efficiency Rating		Current	Potential
Very energy efficient - lower running costs			
(92 plus) A			
(81-91) B			
(69-80) C			
(55-68) D		63	70
(39-54) E			
(21-38) F			
(1-20) G			
Not energy efficient - higher running costs			
England & Wales		EU Directive 2002/91/EC	
Environmental Impact (CO ₂) Rating		Current	Potential
Very environmentally friendly - lower CO ₂ emissions			
(92 plus) A			
(81-91) B			
(69-80) C			
(55-68) D			
(39-54) E			
(21-38) F		38	38
(1-20) G			
Not environmentally friendly - higher CO ₂ emissions			
England & Wales		EU Directive 2002/91/EC	

For an instant or face to face valuation, please scan the QR code:







www.maalems.co.uk
 Earlsfield & Wandsworth Office
 344 Garratt Lane
 Earlsfield, London SW18 4EL
 T: 020 8875 9200
 earlsfield@maalems.co.uk
 Registered in England & Wales No. 5595458

