



Flat (EPC Rating: B)

**LAKESIDE DRIVE**  
**LONDON, NW10 7GQ**

Per month

**£2,250 Per**

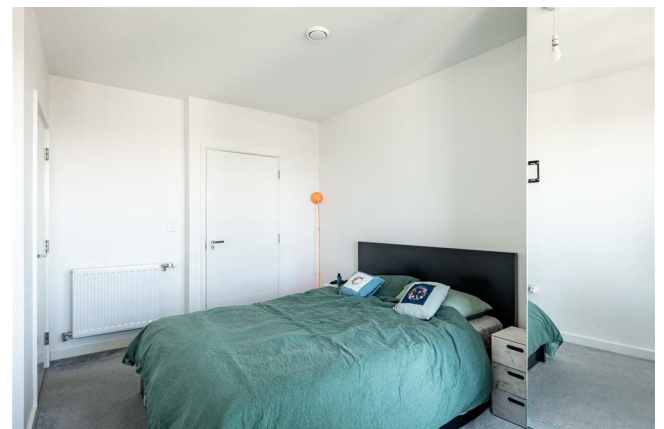
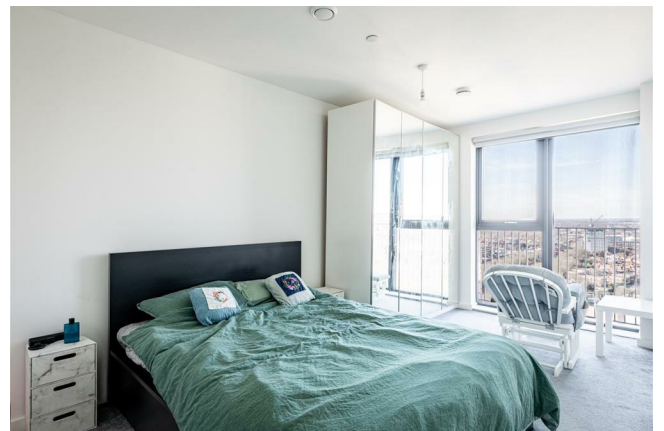
**ALEXANDER STEER**  
Estate Agents

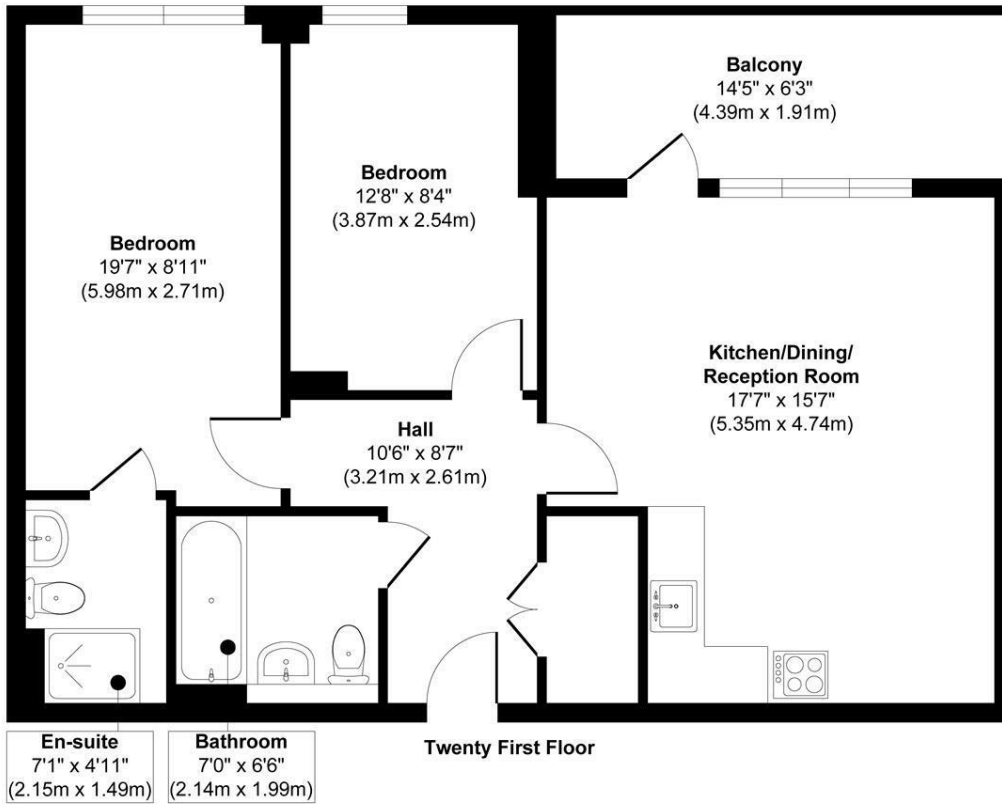


## 2 BEDROOM FLAT LOCATED IN LONDON

SHORT LET - A excellently presented two bedroom, two bathroom apartment situated within a popular modern development in Park Royal. In excellent condition throughout this spacious flat offers 700sqft of living space in a central location. The property comprises two generous double bedrooms, an open-plan kitchen reception room complete with high spec, fitted appliances, two modern styled bathrooms and a private balcony. The property is offered to the market with a long lease.

Baronet House is ideally located for amenities immediately available within Park Royal with plenty of shops, restaurants and more functional supermarkets nearby. It is also well connected for transport in and out of central London with Hanger Lane (Central Line) and Park Royal (Piccadilly Line) both approximately half a mile away. There is also easy access by car via the A40 and A406 in and out of town.





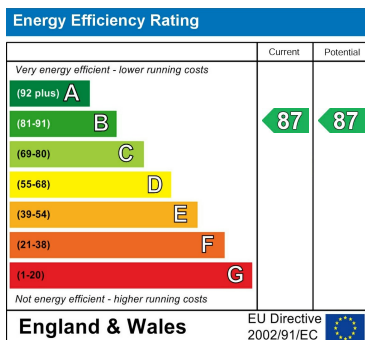
**Approx. Gross Internal Floor Area 696 sq. ft / 64.73 sq. m**

Illustration for identification purposes only, measurements are approximate, not to scale.

Produced by Elements Property

Council Tax Band

Energy Performance Graph



Call us on

**0203 822 0111**

**hello@alexandersteer.co.uk**

**alexandersteer.co.uk**



©ALEXANDERSTEERPROPERTY

Agents Note: Whilst every care has been taken to prepare these particulars, they are for guidance purposes only. All measurements are approximate and are for general guidance purposes only and whilst every care has been taken to ensure their accuracy, they should not be relied upon and potential buyers are advised to recheck the measurements.