



HARDINGS

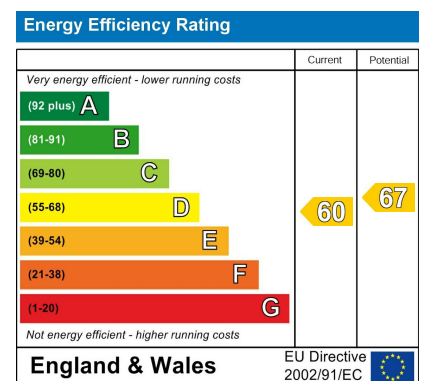


Mountbatten Square
£2,250 Per Month





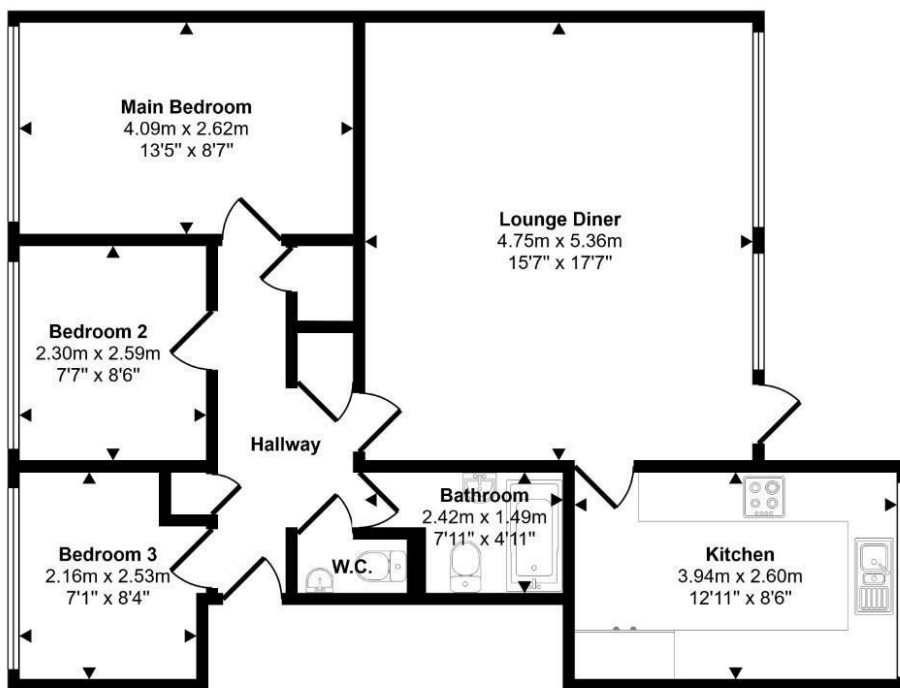
A refurbished three bedroom apartment situated within a stone's throw of Windsor town centre. Beautifully finished throughout, this property comprises entrance hall, spacious living/dining room, kitchen, one double bedroom, two single bedrooms, bathroom and additional WC. Private courtyard garden. Single garage with one allocated parking space in front. Furnished. Council Tax Band C. EPC:D.



Features

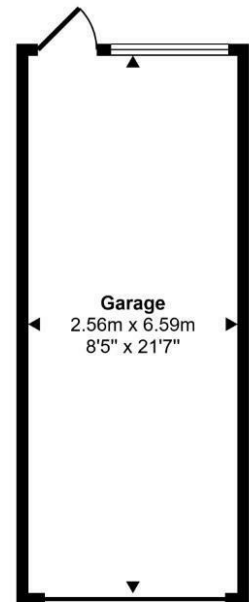
- Refurbished Throughout
- Bathroom and additional WC
- Furnished
- Council Tax Band C
- Three Bedrooms
- Central Location
- Garage
- EPC:D

Approx Gross Internal Area
89 sq m / 957 sq ft



Floorplan

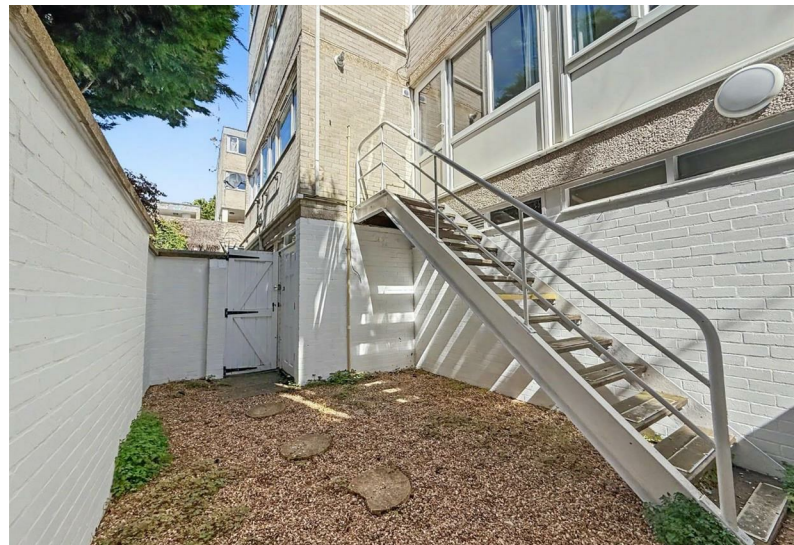
Approx 72 sq m / 776 sq ft



Garage

Approx 17 sq m / 181 sq ft

This floorplan is only for illustrative purposes and is not to scale. Measurements of rooms, doors, windows, and any items are approximate and no responsibility is taken for any error, omission or mis-statement. Icons of items such as bathroom suites are representations only and may not look like the real items. Made with Made Snappy 360.



11 High Street, Windsor, Berkshire, SL4 1LD,
T: 01753 833 118 | E: info@hardings.co.uk
www.hardings.co.uk

