



Lower Rainham Road | Rainham | Gillingham | ME8 7TX

Guide price £625,000



## Lower Rainham Road | Rainham Gillingham | ME8 7TX Guide price £625,000

GUIDE PRICE £625,000 - £650,000

A beautifully renovated four-bedroom detached family home for sale on Lower Rainham Road in Rainham, offering modern turnkey accommodation, open outlooks to the front, and excellent access to schools, transport links and commuter routes into London — ideal for families seeking a semi-rural lifestyle with everyday convenience.

Positioned in one of Rainham's most sought-after locations, this impressive home has been extensively upgraded by the current owners, creating a move-in-ready property perfectly suited to modern family living.

The ground floor offers well-balanced accommodation, including a bright and spacious living room, a dining area opening onto the garden, and a stunning newly fitted kitchen with contemporary finishes. The

- Sought-after Lower Rainham Road location in Rainham
- Fully renovated detached family home
- Four bedrooms with flexible family accommodation
- Stunning modern kitchen and updated interiors throughout
- Spacious living and dining areas ideal for entertaining
- Private rear garden ideal for families
- Open outlook to the front with semi-rural feel
- Garage and large driveway for multiple vehicles
- Close to Rainham railway station and transport links
- Excellent local schools including Rainham Mark Grammar

### Lounge

The lounge offers a comfortable and inviting space with ample natural light from a large front-facing window. It features a stylish fireplace with a curved mantle and mirror above, adding a touch of elegance and warmth. The room is spacious enough to accommodate multiple seating arrangements, making it ideal for relaxing or entertaining guests.

### Dining Area

The dining area is bright and airy, featuring a large wooden table with seating for several guests. French doors open directly onto the garden, providing a seamless indoor-outdoor flow and plenty of natural light. The space is enhanced by tasteful lighting and a piano, creating a welcoming atmosphere for meals and gatherings.





### **Kitchen**

The kitchen is fitted with modern grey cabinetry and white countertops, offering a sleek and contemporary feel. It features a built-in oven, induction hob with an extractor set against a striking exposed brick wall, and plenty of storage. A large window overlooks the garden, flooding the space with natural light, while light tiled flooring adds to the fresh and clean look. The kitchen connects to the utility room for added convenience.

### **Utility**

The utility room is practical and well-arranged, finished with cabinetry in the same style as the kitchen and tiled flooring. It includes a sink beneath a window looking out to the garden and has a door providing direct access to the outside. There is also a cloakroom adjacent, adding further functionality to this helpful space.

### **Hallway**

The entrance hall welcomes you with a warm and inviting feel, featuring wood-effect flooring and a bold green accent wall. A simple console table and subtle décor make this space both practical and pleasant, while the staircase leads smoothly to the first floor.

### **Landing**

The landing on the first floor is bright and spacious, with white walls and carpeting for a soft finish. It connects the bedrooms and bathrooms, and a dark accent wall adds a modern touch to the otherwise neutral palette.

### **Master Bedroom**

The master bedroom is a restful retreat bathed in natural light from a large window with views over open countryside. It is carpeted and features a stylish, modern wooden headboard with integrated lighting, complemented by neutral walls and soft furnishings. An en-suite shower room is attached, offering contemporary fixtures, a large shower cubicle, and elegant tiling for a luxurious feel.

### **Bedroom 2**

Bedroom 2 is a cosy space with a soft green feature wall and neutral carpeting. It is furnished with a double bed and bedside tables and enjoys a garden view through a large window that fills the room with natural light.

### **Bedroom 3**

Bedroom 3 is a bright and cheerful room decorated with playful wallpaper and neutral carpeting. It is well-equipped with a single bed and bedside furniture, with a large window providing plenty of natural light and views of the garden.

### **Bedroom 4 / Study**

Bedroom 4, currently used as a study, features yellow and cream walls and carpeting. It includes a desk positioned by a large window, ideal for working from home or creative pursuits, with lovely views to the outside.

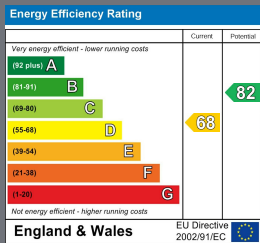
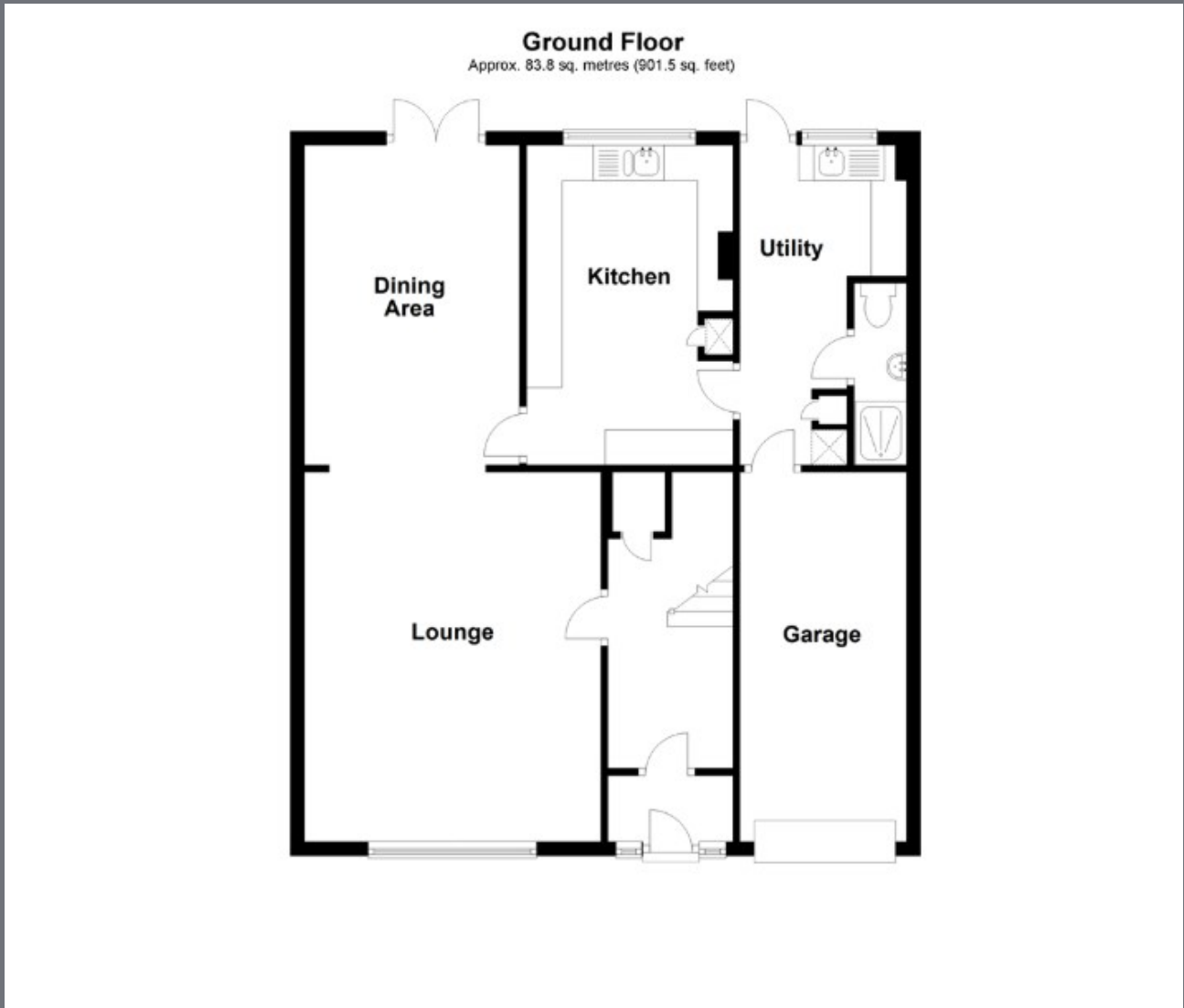
### **Bathroom**

The family bathroom is spacious and modern, with a bathtub set against a light tiled surround and a vanity unit beneath two frosted windows that provide privacy while allowing natural light. The room is completed with wooden-effect flooring and stylish fittings, creating a relaxing atmosphere.

### **Rear Garden**

The rear garden is a generous, well-maintained lawn bordered by mature hedging and shrubs, offering privacy and a tranquil setting. A paved patio area is perfect for outdoor seating, while the expansive lawn provides plenty of space for gardening, play, or entertaining.





2B Crow Lane  
 Rochester  
 Kent  
 ME1 1RF  
 01634 829080

admin@machin-lane.co.uk  
<https://www.machin-lane.co.uk/>