



Fountain Cottages, Ashted

V&H
HOMES

£875,000

Fountain Cottages

Council Tax band: F

Tenure: Freehold

EPC Energy Efficiency Rating: C

EPC Environmental Impact Rating: D

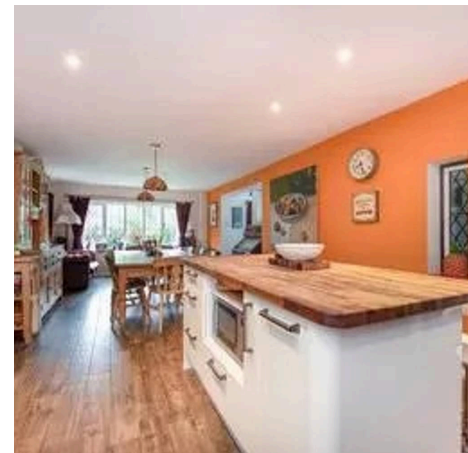
- Built-in bookshelves
- Open plan kitchen dining area
- Kitchen island
- Spacious garden
- Mature trees
- Off-road parking
- Detached garage
- Modern bathroom





This impressive four-bedroom, three-bathroom semi-detached house offers spacious and stylish accommodation ideal for modern family living. The property boasts two welcoming reception rooms, each thoughtfully designed to combine comfort with practicality. The main living room features a striking fireplace set against a bold red accent wall, complemented by built-in bookshelves and contemporary wood-style flooring. A second cosy living area is adorned with a large leaded glass window, vintage-style leather sofas, and rich wooden flooring, providing an inviting space for relaxation. The open plan kitchen and dining area is a focal point of the home, featuring a central kitchen island, sleek wood flooring, and large windows that allow natural light to pour in, creating a bright and sociable environment. The layout also includes a spacious bedroom with balcony access, as well as a versatile room perfect for a home office or creative studio.

Additional features add to the appeal of this delightful property. The modern bathrooms are beautifully presented, with a luxurious freestanding bath-tub, walk-in shower, heated towel rail, and contemporary fixtures that provide both style and comfort. The main bedroom combines a charming fireplace, built-in storage, and ample natural light, ensuring a peaceful and practical retreat. Outdoor living is equally impressive, with a generous garden framed by mature trees and enhanced by a dedicated seating area. A rustic outdoor space perfect for gatherings year-round. Large windows throughout the home create a bright, airy atmosphere and offer pleasant views, while the classic brick exterior adds character and durability. This property is perfectly suited for buyers seeking a harmonious blend of modern design, comfort, and outdoor enjoyment in a well-appointed family home.



- Open Plan Kitchen Dining Area
- Kitchen Island
- Modern Bathroom (freestanding bath and

Fountain Cottage KT21

Approximate Gross Internal Floor Area = 113.2 sq m / 1219 sq ft

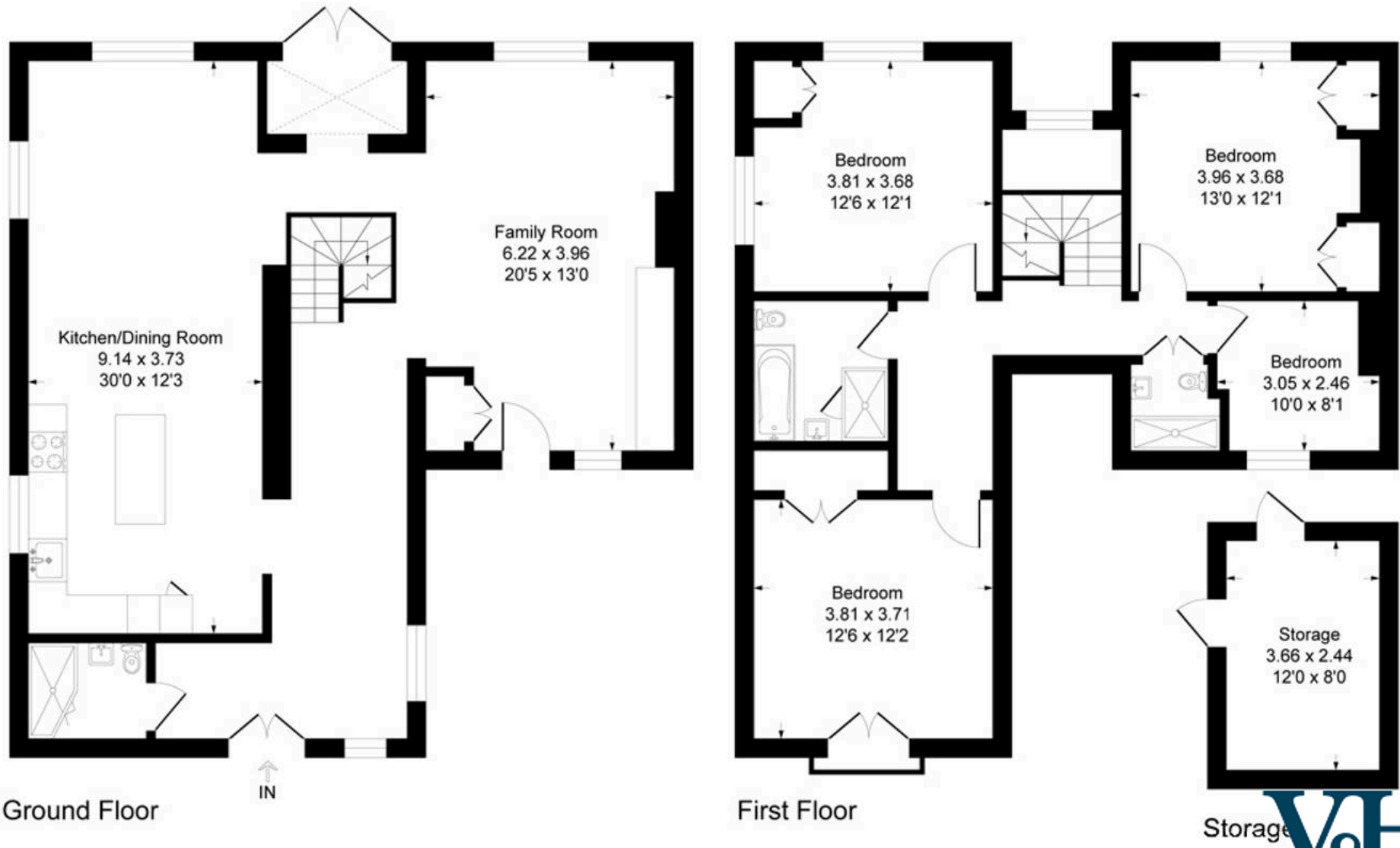


Illustration for identification purposes only, measurements are approximate, not to scale.