

Plot 11 Oceanview Developments, Rosewood Site, Place Road, Cowes, Isle of Wight, PO31 7UA  
Asking Price £595,000

EPG Rating: Council Tax Band:

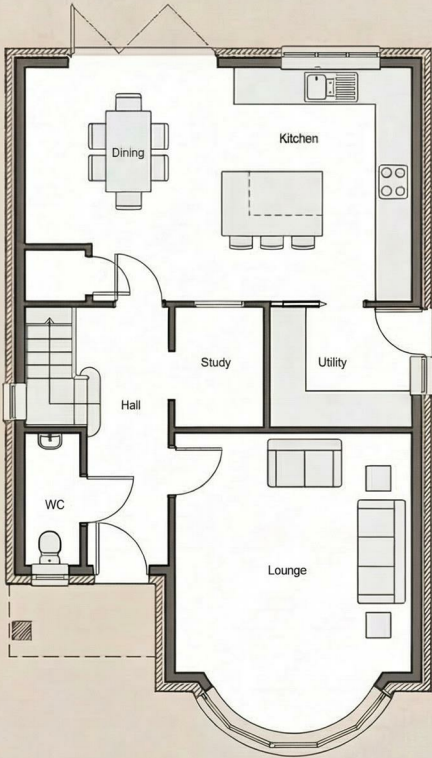


An impressive and beautifully designed four-bedroom detached home, The Heron at Rosewood offers generous family-sized accommodation with a superb kitchen diner, separate lounge, study, utility room and an exceptional principal bedroom suite, together with driveway parking for two cars and an enclosed turfed garden, all set within this exclusive new development on the edge of Cowes.

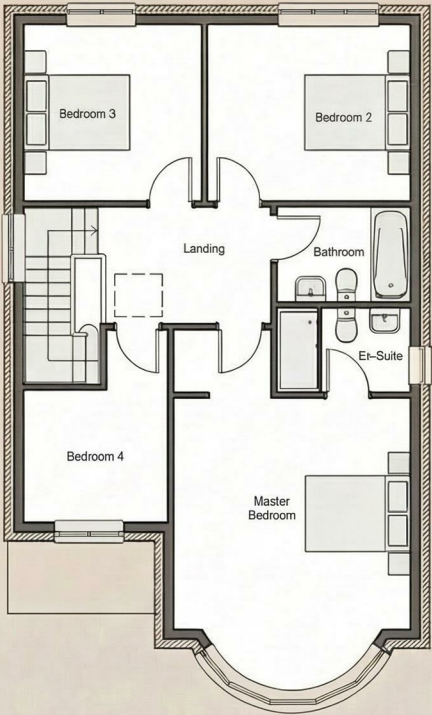
**ELLIOTT  
LINCOLN**  
ESTATE AGENTS & ASSOCIATES

*Reassuringly familiar, refreshingly new*

Call or WhatsApp: 01983 642622  
office@elliottlincoln.co.uk  
www.elliottlincoln.co.uk



Ground Floor Plan



First Floor Plan

Energy Efficiency Rating		
	Current	Potential
<i>Very energy efficient - lower running costs</i>		
(92 plus) <b>A</b>		
(81-91) <b>B</b>		
(69-80) <b>C</b>		
(55-68) <b>D</b>		
(39-54) <b>E</b>		
(21-38) <b>F</b>		
(1-20) <b>G</b>		
<i>Not energy efficient - higher running costs</i>		
<b>England &amp; Wales</b>	EU Directive 2002/91/EC 