



Little Pithfield, Haywards Heath RH16 4WB

welcome to

Little Pithfield, Haywards Heath

Guide Price £575,000-£585,000... This spacious four bedroom semi-detached home is in a quiet cul-de-sac and the accommodation is over three floors and has an open plan dining/living room, modern kitchen, feature master suite, three further bedrooms, family bathroom, garden, parking and a garage.

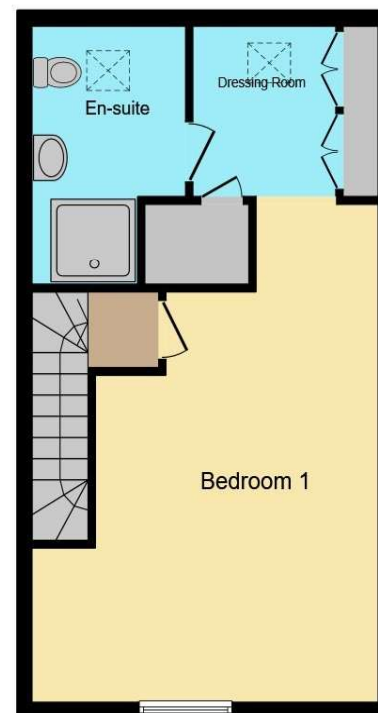




Ground Floor



First Floor



Second Floor

Sitting / Dining Room

16' 4" at max x 15' 7" at max (4.98m at max x 4.75m at max)

Kitchen

14' 1" at max x 8' 4" at max (4.29m at max x 2.54m at max)

W.C.

Bedroom 1

27' 7" at max x 15' 6" at max (8.41m at max x 4.72m at max)

Dressing Room

En-Suite

Bedroom 2

12' 3" at max x 8' 1" at max (3.73m at max x 2.46m at max)

Bedroom 3

15' 2" at max x 8' 8" at max (4.62m at max x 2.64m at max)

Bedroom 4

9' 4" x 6' 6" (2.84m x 1.98m)

Bathroom

Garage

21' 1" at max x 10' 6" at max (6.43m at max x 3.20m at max)

Total floor area 154.5 m² (1,663 sq.ft.) approx

This floor plan is for illustrative purposes only. It is not drawn to scale. Any measurements, floor areas (including any total floor area), openings and orientation are approximate. No details are guaranteed, they cannot be relied upon for any purpose and they do not form part of any agreement. No liability is taken for any error, omission or misstatement. A party must rely upon its own inspection(s). Powered by www.focalagent.com

welcome to

Little Pithfield, Haywards Heath

- Guide Price £575,000-£585,000
- Four bedroom semi-detached house in sought after modern development
- Feature master suite with en-suite and dressing area
- Spacious lounge /dining room
- Modern fully integrated kitchen
- Garage and off-road parking
- Situated in a quiet cul-de-sac
- Ideally located close to local amenities, well regarded schools and main line station

Tenure: Freehold EPC Rating: B

Council Tax Band: E

guide price

£575,000-£585,000



Please note the marker reflects the postcode not the actual property

view this property online fox-and-sons.co.uk/Property/HHT110021



Property Ref:
HHT110021 - 0008

1. MONEY LAUNDERING REGULATIONS Intending purchasers will be asked to produce identification documentation at a later stage and we would ask for your co-operation in order that there is no delay in agreeing the sale. 2. These particulars do not constitute part or all of an offer or contract. 3. The measurements indicated are supplied for guidance only and as such must be considered incorrect. Potential buyers are advised to recheck measurements before committing to any expense. 4. We have not tested any apparatus, equipment, fixtures or services and it is in the buyers interest to check the working condition of any appliances. 5. Where an EPC, or a Home Report (Scotland only) is held for this property, it is available for inspection at the branch by appointment. If you require a printed version of a Home Report, you will need to pay a reasonable production charge reflecting printing and other costs. 6. We are not able to offer an opinion either written or verbal on the content of these reports and this must be obtained from your legal representative. 7. Whilst we take care in preparing these reports, a buyer should ensure that his/her legal representative confirms as soon as possible all matters relating to title including the extent and boundaries of the property and other important matters before exchange of contracts.

Fox & Sons is a trading name of Sequence (UK) Limited which is registered in England and Wales under company number 4268443, Registered Office is Cumbria House, 16-20 Hockliffe Street, Leighton Buzzard, Bedfordshire, LU7 1GN. VAT Registration Number is 500 2481 05.


fox & sons



01444 450105



HaywardsHeath@fox-and-sons.co.uk



115 South Road, HAYWARDS HEATH, West
Sussex, RH16 4LR



fox-and-sons.co.uk