



MANOR AVENUE, SE4

£400,000

One bedroom apartment

Top floor

Loft in demise

Share of freehold

Communal garden

Energy rating: c

@marshandparsons
marshandparsons.co.uk

MARSH &
PARSONS



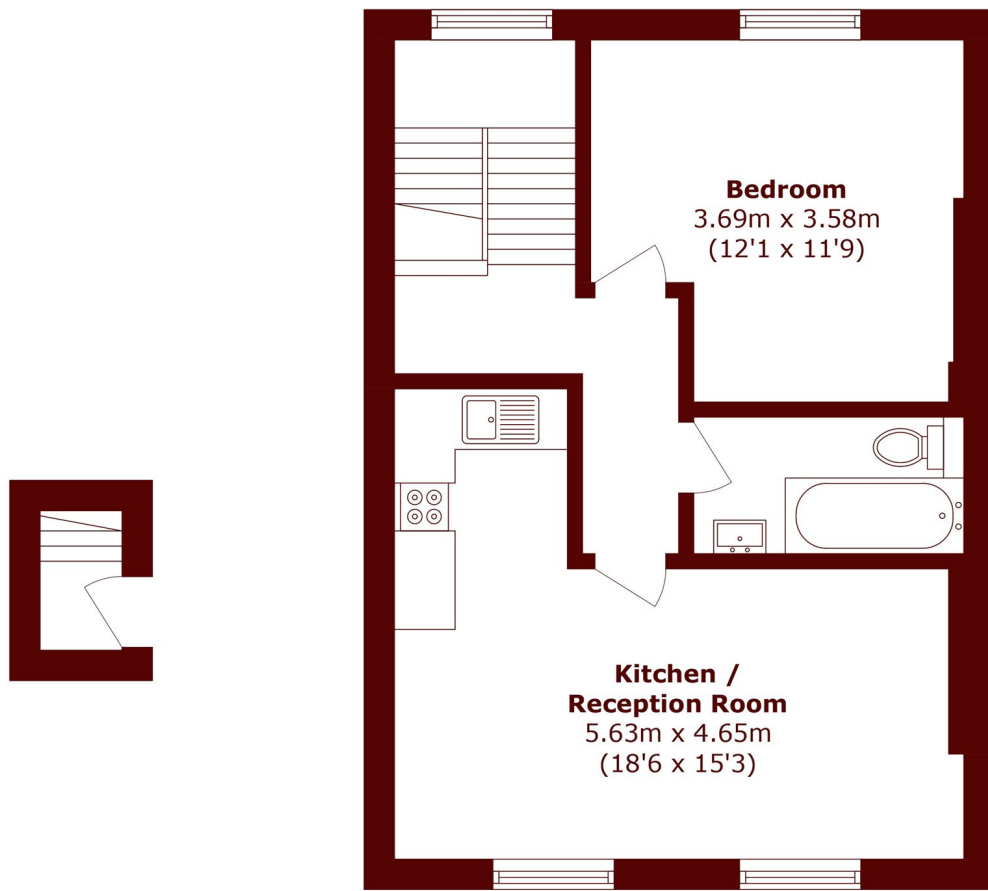
ABOUT THE PROPERTY

A share of freehold apartment set on the top floor of this attractive Victorian end-of-terrace townhouse, also benefiting from ownership of the loft, offering excellent future potential. The home enjoys an abundance of natural light throughout and includes use of a generous section of the west facing garden. It has its own internal staircase with a large sash window with views onto the garden.

Manor Avenue is considered one of the premier addresses within the Brockley Conservation Area. Wide pavements and rows of mature trees frame these beautifully preserved period homes, creating a charming and highly desirable setting.



STEP INSIDE MANOR AVENUE



First Floor

Second Floor

Total area (approx.): 46.7 sq. m (502.6 sq. ft)

Brockley
020 8629 8164

Energy Rating: C We aim to make our particulars both accurate and reliable. However, they are not guaranteed; nor do they form part of an offer or contract. If you require clarification on any points then please contact us, especially if you're traveling some distance to view. Please note that appliances and heating systems have not been tested and therefore no warranties can be given as to their good working order

**MARSH &
PARSONS**