



Thames Street, SE10

£350,000

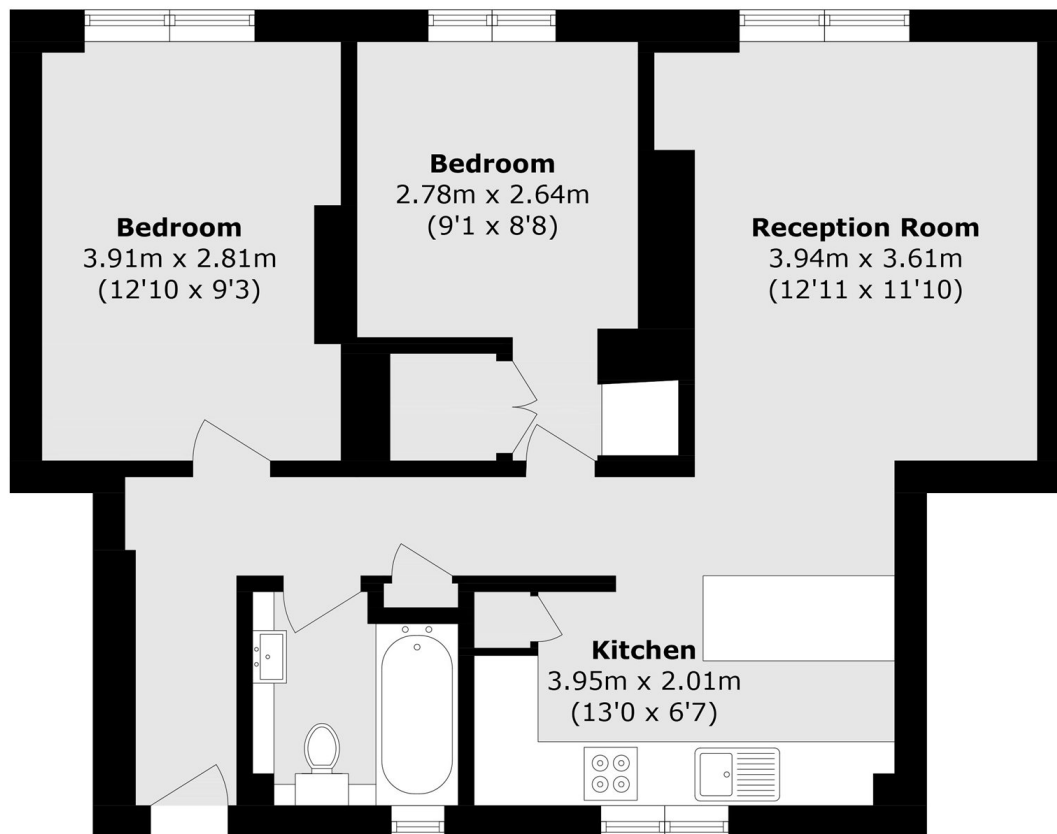
A well presented two bedroom purpose built flat, in a sought after location which is offered to the market chain free. This would be an ideal first purchase

Macey house is a desirable residential development. Waitrose supermarket is just moments away, and within close proximity there are a variety of shops, restaurants and bars, in addition to various parks, which are great for enjoying with the family. Cutty Sark DLR is just 0.3 miles away, offering swift access into both Canary Wharf and the City. Nearby Greenwich Station offers access to Central London within under 10 minutes.

Features

- Chain Free
- Two Bedrooms
- Sought After Location
- Ideal First Purchase
- No Work Required
- Ground Floor

Thames Street,
London, SE10



Total area (approx.): 60.2 sq. m (647.9 sq. ft)