



Bramble Road

Milkwall, Coleford, Gloucestershire, GL16 7PS

Offers Over £415,000



A beautifully presented and attractive family home offering spacious, versatile accommodation throughout. The property benefits from three reception rooms, including a generous lounge, a cosy snug overlooking the rear garden, and a useful storage room currently utilised as a dining room. There is also a modern kitchen with island and a handy ground floor cloakroom.

To the first floor are four well-proportioned bedrooms, including a master bedroom with en-suite, together with a family bathroom. Outside, the property enjoys off-road parking to the front as well as additional parking. The landscaped rear garden is a real feature, boasting a covered pergola, patio, decking and bar area, creating a superb space for both entertaining and relaxing.

Milkwall is a popular village on the outskirts of Coleford, well placed for enjoying both convenience and the surrounding Forest of Dean countryside. The area offers a peaceful residential setting while remaining within easy reach of Coleford town centre, where a wide range of amenities can be found including shops, supermarkets, schools, healthcare facilities and leisure amenities. Woodland walks and cycle trails are also close by, making Milkwall an excellent location for those who enjoy outdoor pursuits.



Approached via UPVC double glazed front door into:

Entrance Hallway:

19'1" x 4'0" (5.83m x 1.22m)

Double panelled radiator, smoke alarm, door to lounge, dining room/storage room & kitchen, stairs to first floor, power & lighting.

Lounge:

16'4" x 11'7" (4.98m x 3.54m)

UPVC double glazed bay windows, double panelled radiator, TV point, power & lighting.

Storage Room (Used as a Dining Room):

13'3" x 7'11" (4.05m x 2.43m)

Double panelled radiator, storage cupboards, mains consumer unit, power & lighting.

Kitchen:

14'4" x 13'9" (4.38m x 4.21m)

A modern fitted kitchen with a range of base, wall and drawer units, central island housing induction hob, integrated fridge, two single ovens, one & a half bowl sink with drainer unit, integrated dishwasher, space & plumbing for washing machine, space & plumbing for dishwasher, extractor hood, UPVC double glazed window, UPVC double glazed door to garden, power & lighting.

Snug:

10'3" x 9'4" (3.13m x 2.86m)

UPVC double glazed patio doors, designer radiator, power & lighting.

Cloakroom:

5'2" x 2'11" (1.60m x 0.91m)

UPVC double glazed window, pedestal hand wash basin, radiator, W.C., lighting, half tiled walls.

First Floor Landing:

8'11" x 6'2" (2.73m x 1.88m)

Spacious landing with storage cupboard, double panelled radiator, loft access, smoke alarm, power & lighting, doors to all bedrooms & bathroom.

Bedroom One:

14'11" x 11'8" (4.57m x 3.56m)

UPVC double glazed window, single panelled radiator, fitted wardrobes with hanging rail, power & lighting.

En-Suite:

5'1" x 4'1" (1.57m x 1.27m)

UPVC double glazed window, tiled walls, tiled flooring, step in shower with glass door, W.C., pedestal wash hand basin, extractor fan, lighting.

Bedroom Two:

10'10" x 10'7" (3.32m x 3.25m)

UPVC double glazed window to rear aspect, single

panelled radiator, fitted wardrobes with hanging rail, power & lighting.

Bedroom Three:

12'11" x 8'7" (3.95m x 2.64m)

UPVC double glazed window, single panelled radiator, power & lighting.

Bedroom Four:

9'3" x 8'7" (2.84m x 2.63m)

UPVC double glazed window, single panelled radiator, power & lighting.

Bathroom:

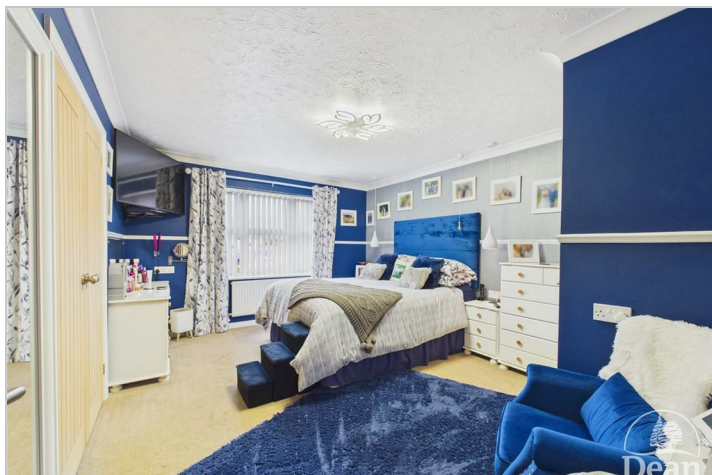
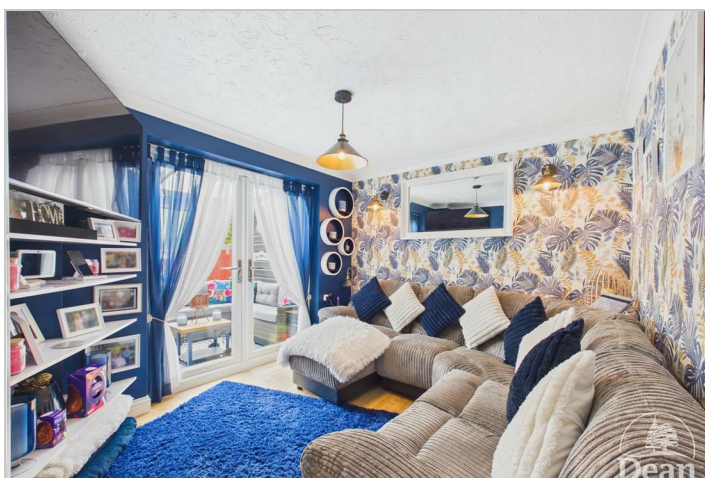
9'6" x 6'11" (2.92m x 2.11m)

UPVC double glazed window, panelled bath with shower over, fully tiled surrounding bath, W.C., pedestal wash hand basin, single panelled radiator, airing cupboard housing boiler, extractor fan, lighting.

Outside:

To the front of the property is a lawned area with water feature & mature shrubs, a driveway providing off road parking & further parking area available. To the side is a gate and pathway leading to the rear garden.

The rear garden has been thoughtfully landscaped to create a fantastic space for relaxing and entertaining. Designed with ease of maintenance in mind, it features an attractive artificial lawn, contemporary decking, well-stocked raised beds and a variety of mature shrubs and ornamental planting that add colour and interest throughout. A substantial covered pergola provides the perfect spot for outdoor dining in all seasons, while the impressive bar and entertaining area make this a truly standout garden for hosting family and friends. The garden is enclosed for privacy and enjoys a lovely open feel with a pleasant backdrop of trees beyond.



Consumer Notes: Dean Estate Agents Ltd have prepared the information within this website/brochure with care and co-operation from the seller. It is intended to be indicative rather than definitive, without a guarantee of accuracy. Before you act upon any information provided, we request that you satisfy yourself about the completeness, accuracy, reliability, suitability or availability with respect to the website or the information, products, services, or related graphics contained on the website for any purpose.

These details do not constitute any part of any Offer, Contract or Tenancy Agreement.

Photographs used for advertising purposes may not necessarily be the most recent photographs, although every effort is made to update photographs at the earliest opportunity. Any reliance you place on such information is therefore strictly at your own risk. All photographic images are under the ownership of Dean Estate Agents Ltd and therefore Dean Estate Agents retain the copyright. You must obtain permission from the owner of the images to reproduce them.

Tenanted Property – we are not always able to show the most recent condition of a property due to tenants' privacy and we may choose to show the photographs of the property when it was last vacant to at least allow clients some idea of the internal condition. Therefore, we would of course, urge you to view before making any decisions to purchase or rent the property and before any costs.

Energy Performance Certificates are supplied to us via a third party and we do not accept responsibility for the content within such reports.

PRC Certificates – Some ex-local authority properties have been repaired in recent years using the PRC Scheme wherein a certificate has been produced by a qualified property engineer. This certificate does not imply the suitability for a mortgage approval and you must satisfy yourself of the work carried out that may meet your lenders criteria.

As with leasehold property or new build development sites, you are likely to be responsible for a contribution to management charges and/or ground rent or a contribution to the development service charge. Please enquire at the time of viewing.

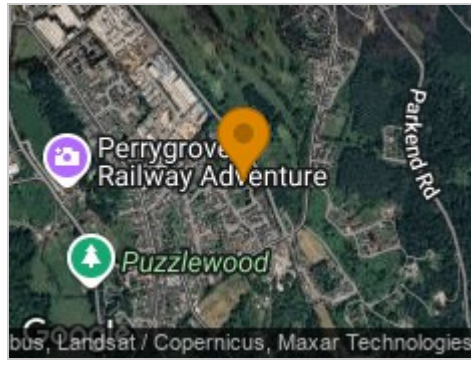
You may also incur fees for items such as leasehold packs and, in addition, you will also need to check the remaining length of any lease before you complete a mortgage application form.

Please ask a member of our team for any help required before committing to purchase a property and incurring expense.

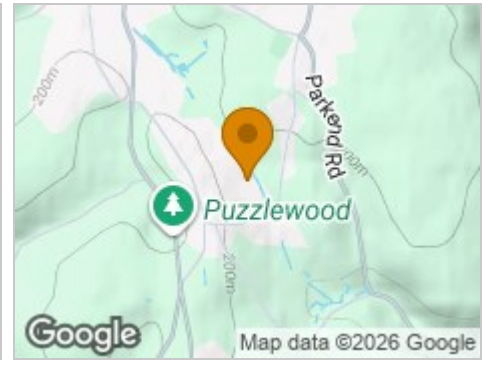
Road Map



Hybrid Map



Terrain Map



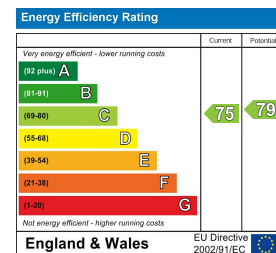
Floor Plan



Viewing

Please contact our Coleford Office on 01594 835751 if you wish to arrange a viewing appointment for this property or require further information.

Energy Efficiency Graph



These particulars, whilst believed to be accurate are set out as a general outline only for guidance and do not constitute any part of an offer or contract. Intending purchasers should not rely on them as statements of representation of fact, but must satisfy themselves by inspection or otherwise as to their accuracy. No person in this firm's employment has the authority to make or give any representation or warranty in respect of the property.