



Three Oak Lane, SE1

£2,700 Per week

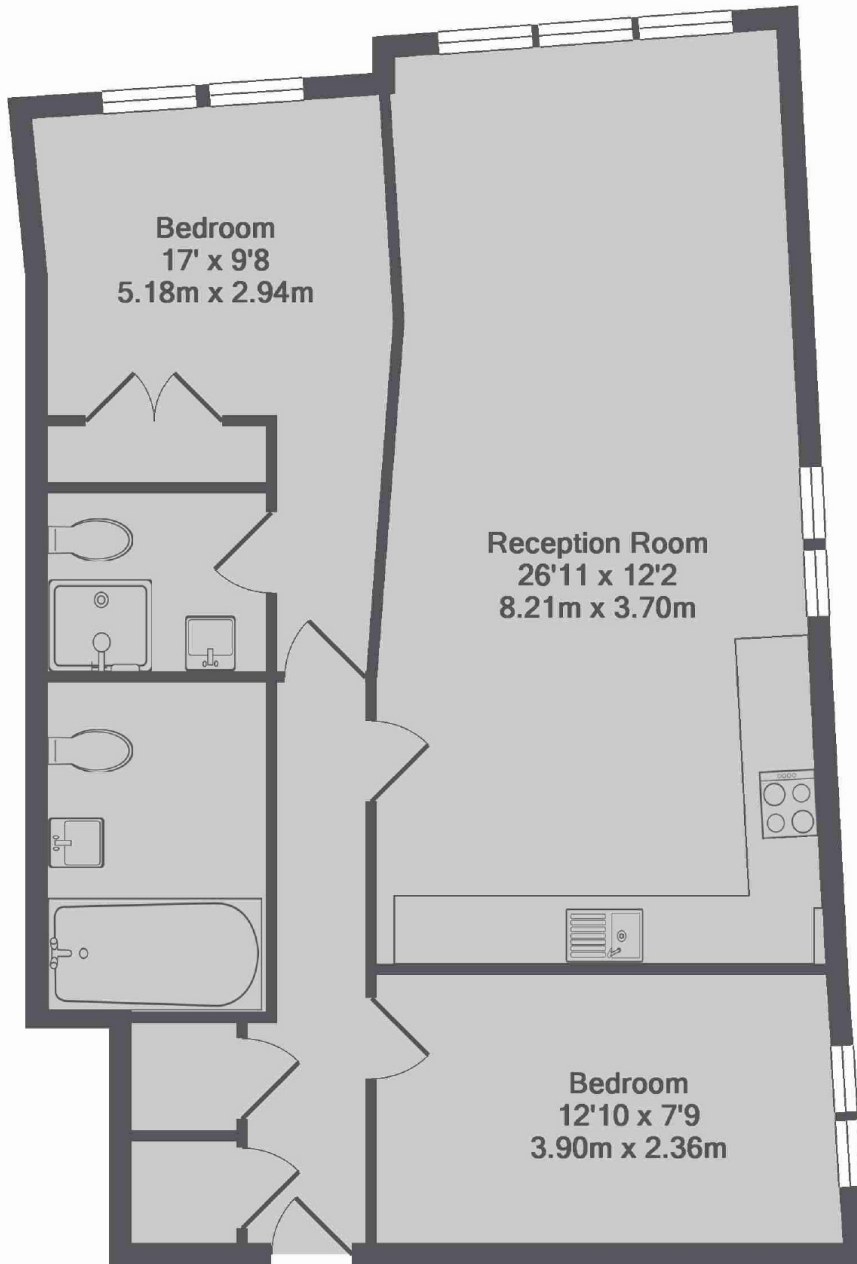
A smart and stylish ground floor two double bedroom, two bathroom apartment available to let in the heart of Shad Thames. Ideal for a family or professional sharers.

Coopers Lodge is an upmarket development in the heart of Shad Thames. The property is just moment from the river front where there are numerous restaurants and bars to choose from. Easy access to London Bridge and Bermondsey Stations.

Features

- Two Double Bedrooms
- Two Bathrooms
- Wood Flooring
- Furnished
- Ground Floor
- Resident's Gym

Three Oak Lane,
London, SE1



Coopers Lodge, SE1
Total Approx. Floor Area 67.0 Sq.M. (721 Sq.Ft.)