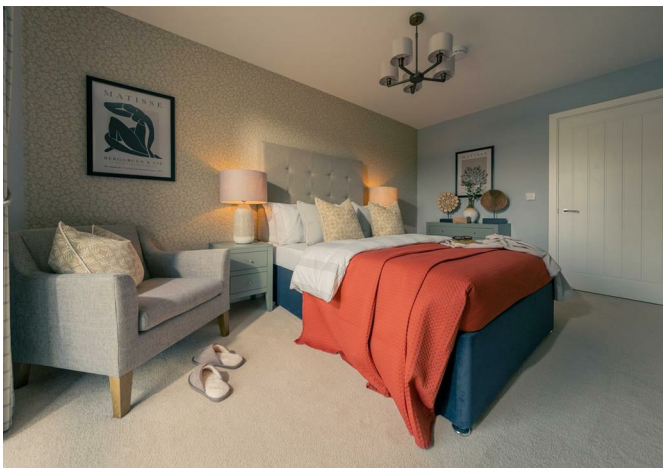




54324 Mendham Lane, Norfolk, IP20 9EW
£1,725 Per month



54324 Mendham Lane, Norfolk, IP20 9EW

£1,725 Per month

Waveney Place is an attractive McCarthy & Stone Retirement Living development set in a peaceful position on Mendham Lane, just a short stroll from the heart of Harleston in the beautiful Waveney Valley on the Norfolk–Suffolk border. The development offers a stylish mix of one and two-bedroom apartments, cottages and bungalows, all thoughtfully designed for easy, independent living for those aged 55 and over.

Each home is finished to a high specification with contemporary fitted kitchens, bright living spaces and modern bathrooms, plus subtle ergonomic touches such as easy-turn taps to make day-to-day life simpler. Residents enjoy a warm, sociable community with access to a stylish shared lounge with Wi-Fi, landscaped gardens, a guest suite for visitors, and the reassurance of a friendly on-site House Manager and a round-the-clock emergency call system.

Harleston itself is a charming, well-connected town with a vibrant community spirit, independent cafes and traditional pubs, more than 147 listed buildings, and plenty of opportunities for walking, fishing and golf in stunning countryside surroundings.

Description



Situation



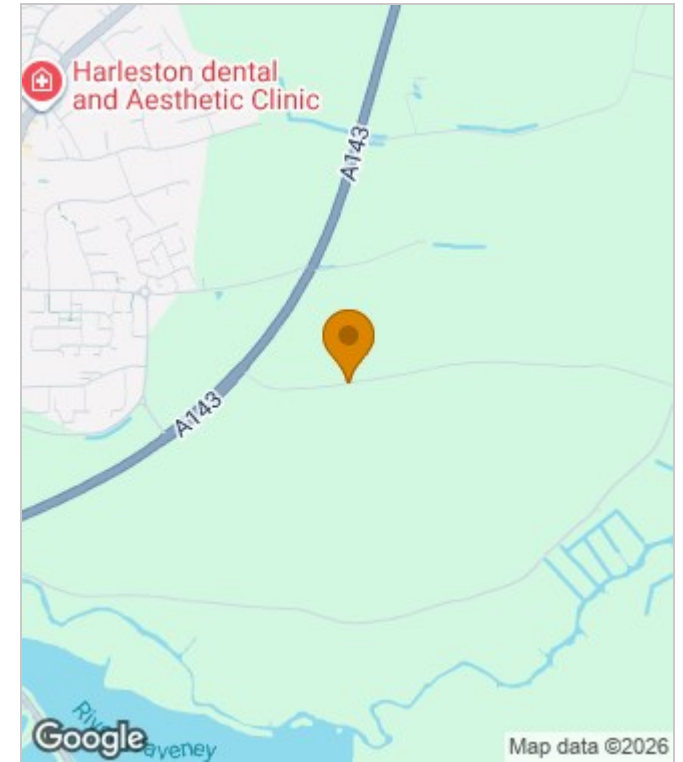
Unfurnished
Council Tax Band:
Available:

Floor Plans

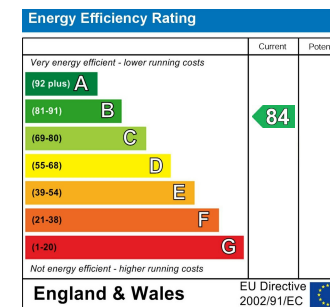


Bedroom (Max)	9' 0" x 17' 8"	2765mm x 5400mm
Living (Max)	12' 7" x 14' 5"	3853mm x 4400mm
Kitchen (Max)	10' 7" x 8' 0"	3228mm x 2460mm
Hallway (Max)	4' 7" x 11' 3"	1420mm x 3439mm
Shower Room (Max)	6' 3" x 7' 2"	1915mm x 2200mm

Area Map



Energy Performance Graph



These particulars, whilst believed to be accurate are set out as a general outline only for guidance and do not constitute any part of an offer or contract. Intending purchasers should not rely on them as statements of representation of fact, but must satisfy themselves by inspection or otherwise as to their accuracy. No person in this firm's employment has the authority to make or give any representation or warranty in respect of the property.