



SHURDINGTON ROAD

LECKHAMPTON | CHELTENHAM

SHURDINGTON ROAD

LECKHAMPTON | CHELTENHAM
£3,000 PCM

Available From Friday 22 May
Holding Deposit: £692.30
Tenancy Term: Long Term
Council Tax Band: D
EPC Band: C

.....

ground floor

Entrance Porch • Open-Plan Living / Dining
Modern Kitchen • Family Bathroom
Two Large Double Bedrooms

first floor

Two Double Bedrooms • Shower Room
Eaves Storage

outside

Driveway / Off-Road Parking • Spacious
Rear Garden • External Access Storage



the property

A rarely available contemporary four bedroom detached home with a private drive in Leckhampton and close to Cheltenham Town Centre. This stunning home has recently undergone a full renovation and offers > entrance porch opening to a large open plan lounge / kitchen diner. The lounge has high vaulted ceilings, feature wood burning stove and can be partitioned off from the kitchen / diner with sliding pocket doors. The kitchen has a central island, breakfast bar and patio doors leading to a well maintained rear garden. Also downstairs are two generous double bedrooms and a beautiful four piece family bathroom. Upstairs has two more double bedrooms, plenty of eaves storage and a modern shower room.

Further benefits include a gated drive with parking for multiple vehicles, storage garage, gas central heating and double glazing.

Leckhampton is one of Cheltenham's most popular residential locations and is located just south of Cheltenham Town Centre. The area has several sought after primary and secondary schools and also has good bus services to the Town Centre. Popular Bath Road is also close by and has an excellent array of independent cafes, restaurants and retail stores.



4 BEDROOMS



2 BATHROOMS



LIVING ROOM



DINING ROOM



STORAGE ROOM



MODERN
KITCHEN



REAR
GARDEN



WORKING
LOG BURNER



LECKHAMPTON
LOCATION

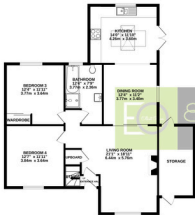


HIGH-SPEC
FINISHING



the floorplan

GROUND FLOOR
1997 sq ft. (183.9 sq.m.) approx.



1ST FLOOR
448 sq ft. (41.5 sq.m.) approx.



Elliot Oliver
sales and lettings

TOTAL FLOOR AREA: 1549 sq ft. (143.4 sq.m.) approx.

While every attempt has been made to ensure the accuracy of the floorplan, measurements of doors, windows, stairs and any other details are approximate and no responsibility is taken for any error, omission or mis-statement. This plan is for illustrative purposes only and should be used as such by any prospective purchaser. The services, appliances and appliances shown here are based on what is shown and no guarantee as to their operability or efficiency can be given.
Note: walls feature 100mm

