



CARLOW STREET, NW1

£1,850 pcm

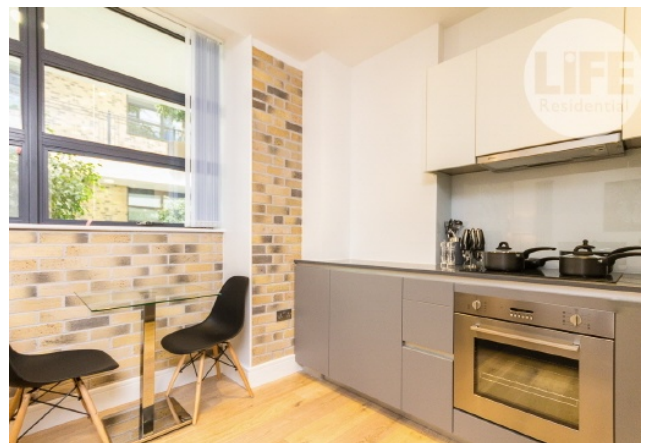
This landmark building consists of striking art deco facade and retained warehouse type features including two lifts serving the variety of modern apartments, Tenants not only benefit from a concierge and secure cycle store but also luxurious apartment specifications.

- Furnished Studio Apartment
- 0.5 miles to Kings Cross station
Daytime Concierge
- Secure cycle storage
- Close to Mornington Crescent
Camden Town Underground .
38.9 Sqm / 419 Sq Ft

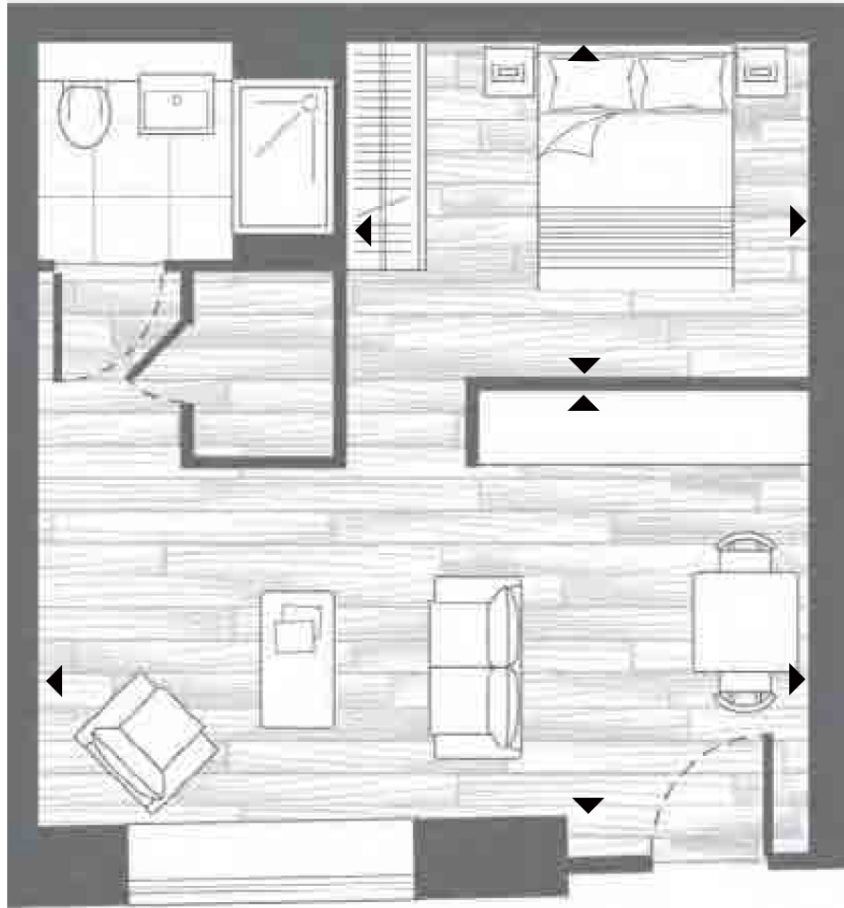


ABOUT THE HOME

Moments from Camden & Mornington Crescent. Fantastic Location!







Total area	38.9 sq.m.	419 sq.ft.
Living area	5.9 x 3.4m	19'3" x 11'1"
Bedroom area	3.5 x 2.6m	11'5" x 8'6"

LiFE RESIDENTIAL

71 Drayton Park, London, N5

1BF

Sales: 020 3838 8666

Lettings: 020 7359 4488

Energy Rating: C. We aim to make our particulars both accurate and reliable. However they are not guaranteed; nor do they form part of an offer or contract. If you require clarification on any points then please contact us, especially if you're traveling some distance to view. Please note that appliances and heating systems have not been tested and therefore no warranties can be given as to their good working order.