



Womersley Road, N8 9AE

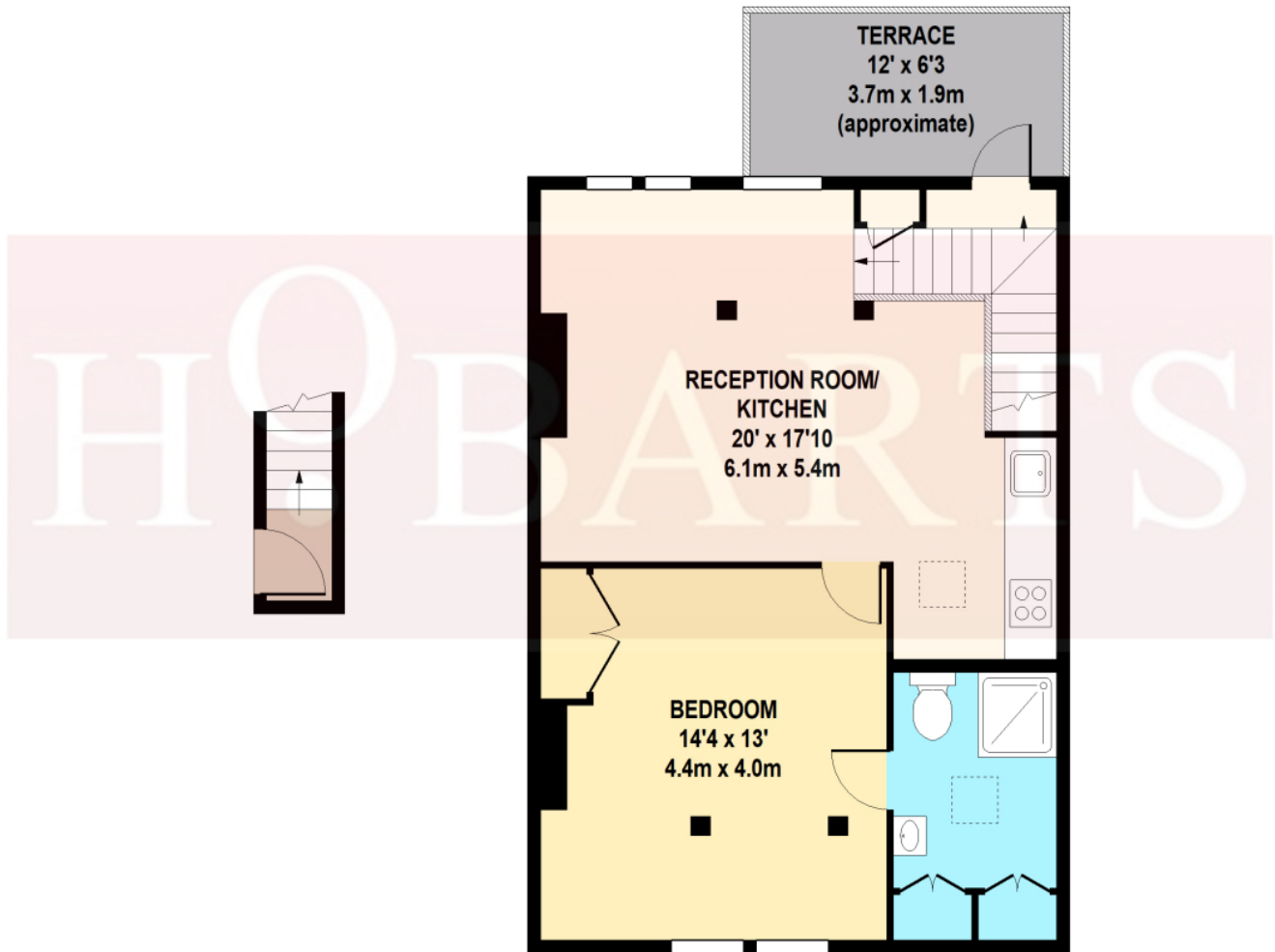
£1,900 pcm

This stylish top-floor one-bedroom flat offers modern living with a bright open-plan kitchen, dining and living space. The double bedroom is well-sized with room for a desk, ideal for working from home, and is complemented by a sleek contemporary shower room. A private roof terrace provides a great outdoor space for relaxing or entertaining. Ideally located between Crouch End and Stroud Green, with excellent transport links via Finsbury Park and Crouch Hill, offering easy access into the City. Early viewings are highly recommended.

Hobarts Estate Agents
23 Ferme Park Road, Stroud Green, London, N4 4DS
stroudgreen@hobarts.co.uk
www.hobarts.co.uk
442083429000



- Charming one-bedroom top-floor flat
- Spacious living area with open-plan kitchen and dining
- Double bedroom with space for a home desk
- Pristine, modern shower room
- Private roof terrace with lovely views
- Equidistant to Crouch End and Stroud Green
- Excellent transport links via Finsbury Park and Crouch Hill stations



SECOND FLOOR

THIRD FLOOR

WOMERSLEY ROAD
 TOTAL APPROX. FLOOR AREA 587 SQ.FT. (55 SQ.M.)

Whilst every attempt has been made to ensure the accuracy of the floor plan contained here, measurements of doors, windows, rooms and any other items are approximate and no responsibility is taken for any error, omission, or mis-statement. This plan is for illustrative purposes only and should be used as such by any prospective purchaser. The services, system and appliances shown have not been tested and no guarantee as to their operability or efficiency can be given.



Score	Energy rating	Current	Potential
92+	A		
81-91	B		
69-80	C		79 C
55-68	D	57 D	
39-54	E		
21-38	F		
1-20	G		

Tenure:

Ground rent:

Service Charges:

Local Authority:

Viewings:

Strictly by appointment via
HOBARTS ESTATE AGENTS
442083429000

Contact:

23 Ferme Park Road, Stroud
Green, London, N4 4DS

stroudgreen@hobarts.co.uk
www.hobarts.co.uk

rightmove

PrimeLocation.com

homes24.co.uk

Zoopa.co.uk

propertyfinder.com



These property details, including measurements, floor plans and items depicted in photographs etc. are intended only as a brief guide to prospective purchasers and are not intended to be relied upon for any purpose whatsoever. Any interested party should satisfy themselves by inspection or otherwise as to the correctness of each statement contained in these details.