



Rhodes Fold Cottage, Apple Street, Gee Cross, Hyde



# Rhodes Fold Cottage, Apple Street

Gee Cross

Welcome to this enchanting three-bedroom, two-bathroom detached cottage, where classic countryside charm meets modern comfort in a truly picturesque setting.

From the moment you arrive, the traditional stone exterior, adorned with a quaint window boxes and sweeping front garden sets a welcoming tone.

Step inside and discover thoughtfully designed living spaces, including two inviting reception rooms, each brimming with character and warmth.

Large windows throughout offer breath-taking panoramic views of rolling green hills and the lush, expansive gardens that surround the property, filling every room with natural light and a sense of tranquillity.





## Rhodes Fold Cottage, Apple Street

Gee Cross

The heart of the home is a delightful farmhouse-style kitchen, complete with a classic butler sink, elegant wooden countertops, and space for a range cooker that perfectly blends rustic charm with modern functionality.

A rustic wooden stable door and large windows flood the room with natural light creating an inviting atmosphere for both every-day meals and special gatherings. A handy utility room sits next door, with space for the busiest of washing days and a downstairs wc for visiting guests.

The adjoining dining area is captivating, featuring beautiful wooden flooring, period light fixtures, and a classic wooden dining table positioned beside large windows on two sides that frame serene views of the garden and countryside beyond.







# Rhodes Fold Cottage, Apple Street

Gee Cross

The living room is designed for comfort and relaxation, with its own unique features.

Picture yourself unwinding beside the charming stone fireplace with a wood-burning stove, exposed wooden beams overhead, and soft carpets underfoot.

Tasteful décor, comfortable seating, and decorative mantels add a truly homely feel, making these spaces ideal for both cosy evenings and lively get-togethers with friends and family.





## Rhodes Fold Cottage, Apple Street

Gee Cross

Upstairs, the bedrooms continue the theme of comfort and style, with exposed brick feature walls, built-in wardrobes, decorative radiators, and soft carpet flooring. Each room is bathed in natural light, with large windows offering stunning scenic views, and calming, neutral décor that creates an inviting retreat to relax after a long day.

The bathroom has been thoughtfully updated to provide a touch of luxury. Enjoy the convenience of a modern walk-in shower, sleek vanities with ample storage, and contemporary fixtures complemented by rustic wooden accents.

Heated towel rails, frosted glass windows, and elegant cabinetry ensure both comfort and functionality, while natural tones and large mirrors enhance the sense of space and serenity.

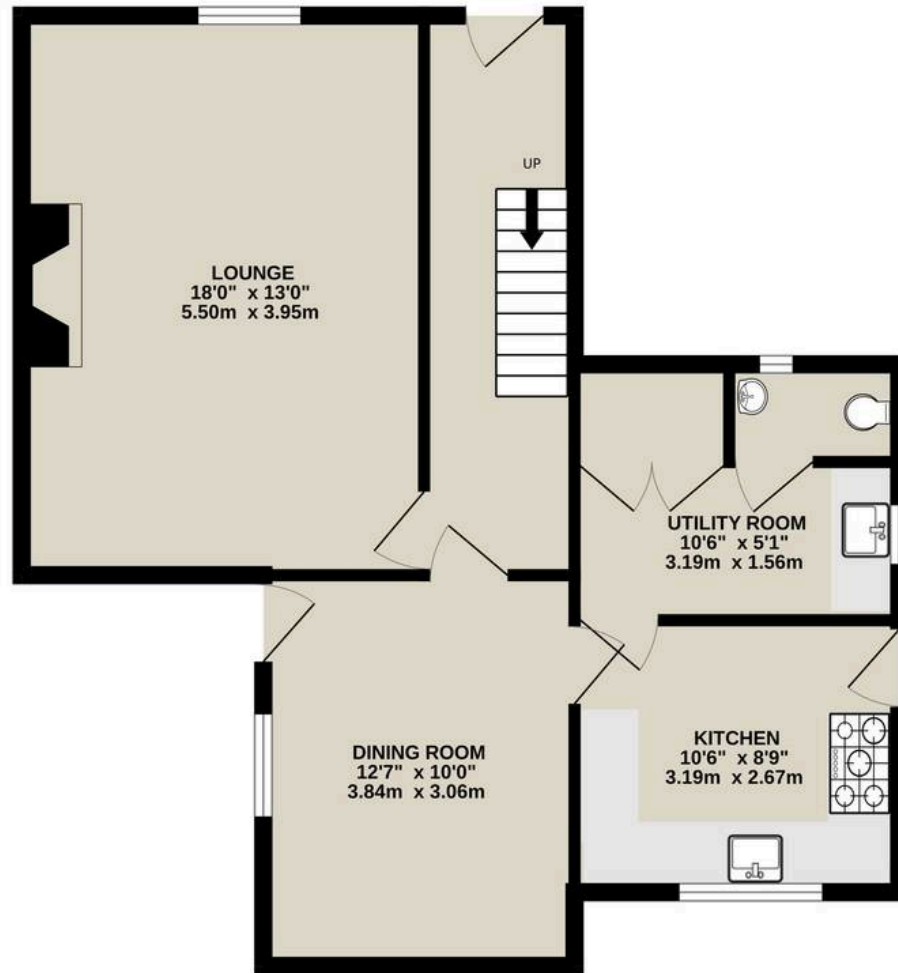
Step outside and be captivated by the extensive, well-maintained gardens that wrap around the home. Mature fruit trees, lush greenery, and dense hedges offer privacy and a peaceful atmosphere, while a beautifully landscaped lawn provides plenty of space for family activities or quiet moments in nature. The inviting patio and various outdoor seating areas are perfect for al fresco dining. The generous garden room is ideal for guests when the evenings get cooler, it could also be a home office, although the stunning views may be too much of a distraction!

To the front of the property there is parking for several cars and an opportunity to extend if needed.

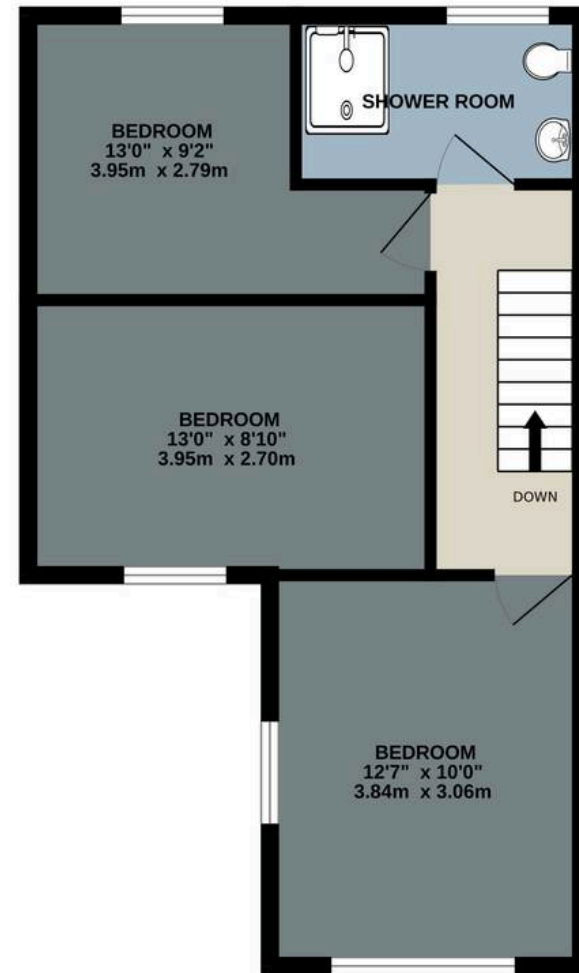




GROUND FLOOR  
617 sq.ft. (57.4 sq.m.) approx.



1ST FLOOR  
448 sq.ft. (41.6 sq.m.) approx.



TOTAL FLOOR AREA : 1065 sq.ft. (99.0 sq.m.) approx.

Whilst every attempt has been made to ensure the accuracy of the floorplan contained here, measurements of doors, windows, rooms and any other items are approximate and no responsibility is taken for any error, omission or mis-statement. This plan is for illustrative purposes only and should be used as such by any prospective purchaser. The services, systems and appliances shown have not been tested and no guarantee as to their operability or efficiency can be given.

Made with Metropix ©2026



# Rhodes Fold Cottage, Apple Street

Gee Cross

On the edge of Werneth Low Country Park you do not need the car to explore. Walks/cycling and horse-riding trails are all available from your front door. There are plenty of opportunities for a rest along the way with various pubs for light refreshments. Supermarkets, schools and the bright lights of Manchester are within easy reach. If you are looking for commuting options, the M60/M67 are a few minutes driveway and there are several railway stations to choose from. You are in the perfect spot for heading further afield with the Peak District a short drive and Manchester Airport 25 minutes away, heading to the sun or away for business is easy.

Council Tax band: E

Tenure: Freehold

EPC Energy Efficiency Rating: E

- Charming detached stone cottage
- Stunning countryside views
- Expansive landscaped garden
- Private driveway (off-road parking)
- Farmhouse-style kitchen
- Cosy fireplace with wood-burning stove
- Spacious patio and outdoor seating areas
- Modern bathroom with walk-in showers and heated towel rail
- Separate garden room





## Jardine Estates

287 Stockport Road, Gee Cross, Hyde - SK14 5RF

0161 871 7071 • [team@jardineestates.co.uk](mailto:team@jardineestates.co.uk) • [jardineestates.co.uk](http://jardineestates.co.uk)



**JARDINE**  
ESTATES