

Birdwell Lane, Long Ashton BS41 9AJ

Asking Price £350,000

- 1800's End Of Terrace Cottage
- Two Double Bedrooms
- Beautifully Presented Throughout
- Bundles Of Charm & Character
- Living Room with Log Burner
- Fitted Kitchen
- Downstairs Shower Room
- Garden Cabin / Home Office
- Private Outside Gardens / Off Street Parking

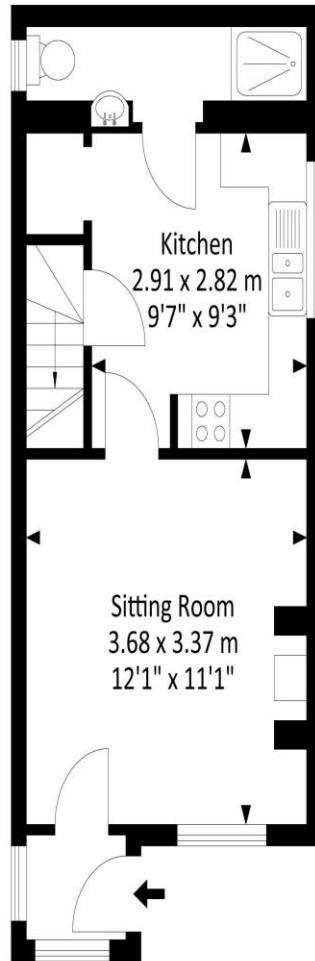
SUMMARY

Located in the heart of Long Ashton and a short walk from all local amenities this beautiful two bedroom 1800's cottage is full of charm and character. The property is well presented throughout and is in the Birdwell School catchment area. Located on the corner of Birdwell lane the accommodation is laid over two floors with an entrance porch, stylishly decorated living room which offers a log burner and stripped back floorboards. The living room is triple aspect so bundles of light floods through all day. There is a fitted kitchen with a range of base and wall units and stainless-steel sink. There is space for a four-ring gas hob with oven below, fridge freezer and washing machine. The downstairs shower room consist of enclosed mains fed shower, WC, vanity unit, heated towel rail and extractor. To the first floor there are two double bedrooms with the master boasting an exposed brickwork feature wall. The second bedroom is a double with a large storage cupboard housing the wall mounted boiler. Outside to the front is very unique with the current vendors using it a garden space with raised beds and cabin which has power and light, perfect for a home office / studio. There is an opportunity to use this space as a driveway curating off street parking.

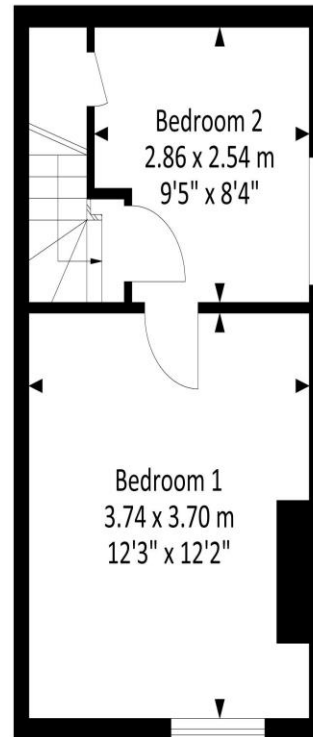


Birdwell Lane Long Ashton BS41 9AJ

Approx. Gross Internal Area
550.9 Sq.Ft - 51.2 Sq.M



Ground Floor



First Floor



Tenure
Freehold

EPC Rating
D

Council Tax Band
B

Services Mians Gas, electric and water

For illustrative purposes only. Not to scale.

Whilst every attempt has been made to ensure accuracy of the floor plan all measurements are approximate and no responsibility is taken for any error, omission or measurement.

Clifton : 01179 744 766
Long Ashton : 01275 393 956
Southville : 01174 523 700

