

for sale

offers over **£130,000**



Jason House Poseidon Close Swindon SN25 2LY

This well-presented **TWO BEDROOM SECOND FLOOR APARTMENT** offers spacious and comfortable living. Bedroom one with **ENSUITE** shower room. **ALLOCATED PARKING**. Located in the sought-after area of **OAKHURST NORTH SWINDON**,



Jason House Poseidon Close Swindon SN25 2LY

Accommodation Details

Entrance Hall

Door to communal hall. Access to all rooms. Cupboard.

Lounge

15' 9" x 11' 3" (4.80m x 3.43m)

Double glazed window to the front aspect. Access to the kitchen. Radiator.

Kitchen

7' 8" x 6' 3" (2.34m x 1.91m)

Fully fitted kitchen with a range of base and wall mounted units comprising of cupboards and drawers. Sink with drainer and mixer tap. Four ring gas hob, oven and cooker hood. Space and plumbing for washing machine. Boiler. Partially tiled to water sensitive areas.

Bedroom One

12' 3" x 8' 7" (3.73m x 2.62m)

Double glazed window to the front aspect. Access to ensuite. Radiator.

Ensuite

Three piece suite comprising of Low Level WC, wash hand basin and shower. Partially tiled to water sensitive areas.

Bedroom Two

11' 8" x 5' 9" (3.56m x 1.75m)

Double glazed window to the front aspect. Radiator.

Bathroom

Three piece suite comprising of Low Level WC, wash hand basin and panelled bath.

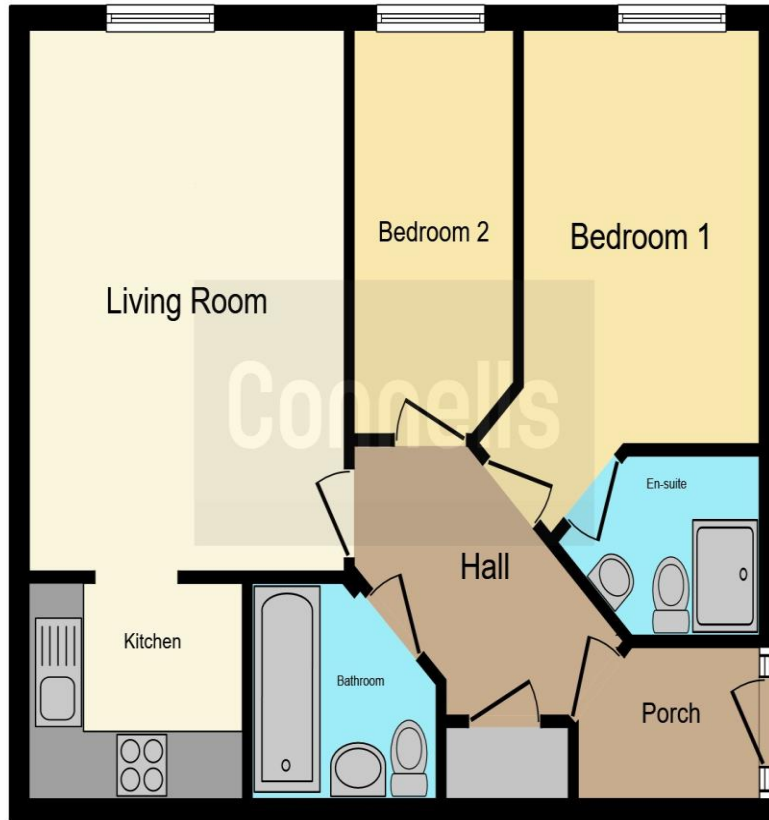


External Features

Parking

Allocated parking





This floor plan is for illustrative purposes only. It is not drawn to scale. Any measurements, floor areas (including any total floor area), openings and orientation are approximate. No details are guaranteed, they cannot be relied upon for any purpose and they do not form part of any agreement. No liability is taken for any error, omission or misstatement. A party must rely upon its own inspection(s). Powered by www.focalagent.com

To view this property please contact Connells on

T 01793 708050
E swindonnorth@connells.co.uk

Unit B11 North Swindon District Centre Thamesdown Drive
 SWINDON SN25 4AN

Property Ref: SDN313931 - 0007

Tenure:Leasehold EPC Rating: C

Council Tax Band: C Service Charge: 1225.58

Ground Rent: 75.00

view this property online connells.co.uk/Property/SDN313931

This is a Leasehold property with details as follows; Term of Lease 150 years from 01 Jan 2007. Should you require further information please contact the branch. Please Note additional fees could be incurred for items such as Leasehold packs.

1. MONEY LAUNDERING REGULATIONS Intending purchasers will be asked to produce identification documentation at a later stage and we would ask for your co-operation in order that there will be no delay in agreeing the sale. 2. These particulars do not constitute part or all of an offer or contract. 3. The measurements indicated are supplied for guidance only and as such must be considered incorrect. Potential buyers are advised to recheck measurements before committing to any expense. 4. We have not tested any apparatus, equipment, fixtures, fittings or services and it is in the buyers interest to check the working condition of any appliances.

Connells Residential is registered in England and Wales under company number 1489613, Registered Office is Cumbria House, 16-20 Hockliffe Street, Leighton Buzzard, Bedfordshire, LU7 1GN. VAT Registration Number is 500 2481 05.

