



## Courthope Road South End Green NW3 £579,950 Sole Agent

A superb apartment occupying the entire ground floor of a Victorian terraced house in a popular residential area, moments from the local shops and transport facilities at South End Green, and the open acres of Hampstead Heath. The flat has been significantly improved by the current owner and now benefits from a magnificent kitchen/breakfast room and excellent recently installed bathroom and shower room. The excellent reception room retains many original features and there is the added benefit of a private south west facing decked garden and a cellar. An internal inspection is strongly recommended to appreciate the quality of this fine home.

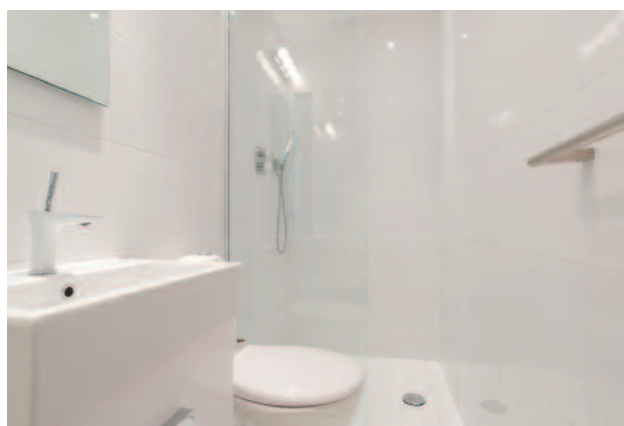
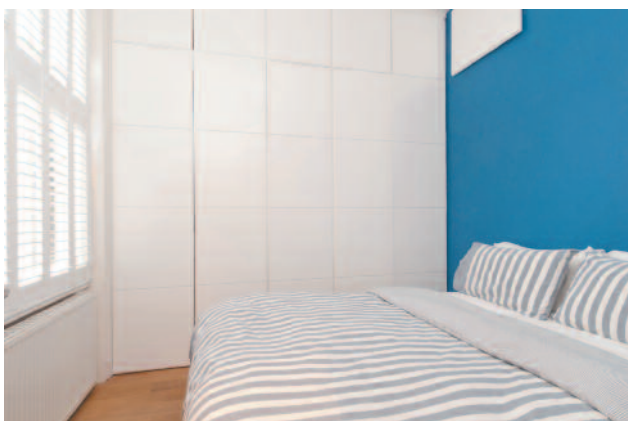
Bedroom \* Bathroom \* Shower Room \* Reception Room \* Kitchen/Diner \* Study/Office \* Cellar \* Garden \* Residents Parking Zone

Hampstead Sales Office | 020-7435 9822  
56 Heath Street London NW3 1DL | Email: sales@b-r.co.uk

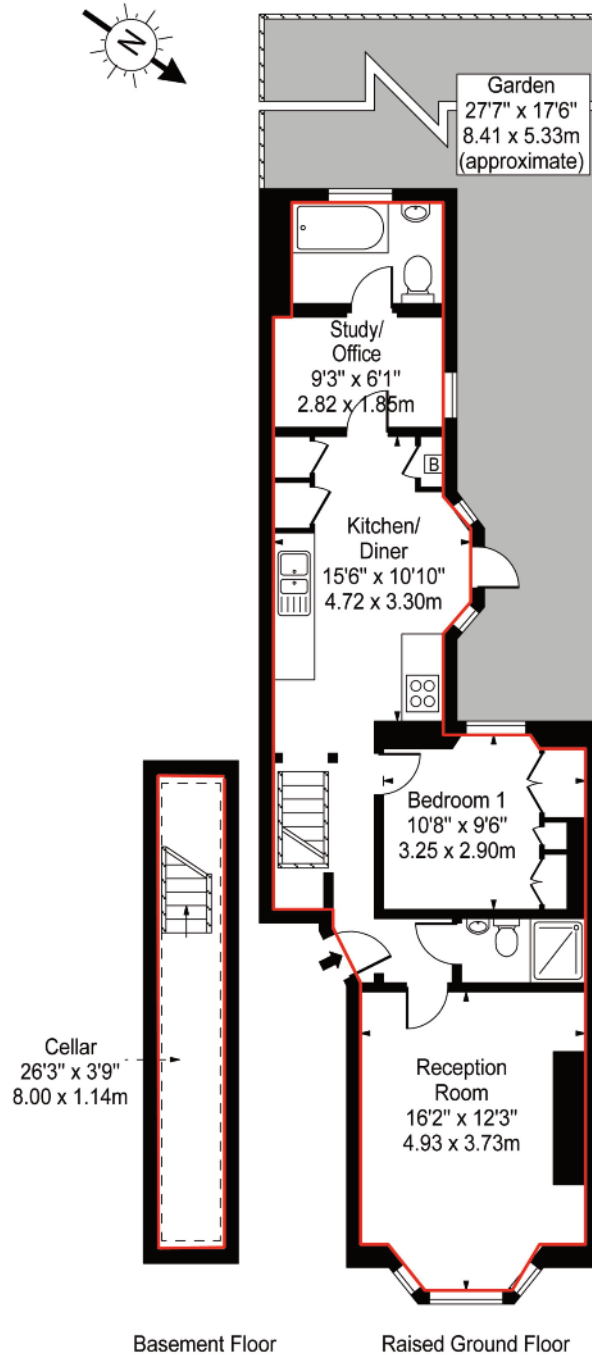


100127728/CC

If you would like to receive details within minutes please provide us with your email address.



**Courthope Road,  
Hampstead, NW3 2LE**



**Approx Gross Internal Area 791 Sq Ft - 73.48 Sq M**

For Illustration Purposes Only - Not To Scale Floor Plan by [www.nogaphotostudio.com](http://www.nogaphotostudio.com) Ref: No.10798

This floor plan should be used as a general outline for guidance only. Any intending purchaser or lessee should satisfy themselves by inspection, searches, enquiries and full survey as to the correctness of each statement. Any areas, measurements or distances quoted are approximate and should not be used to value a property or be the basis of any sale or let.