

12a Westminster Close, Ilford, IG6 1PQ



£1,650 Per month

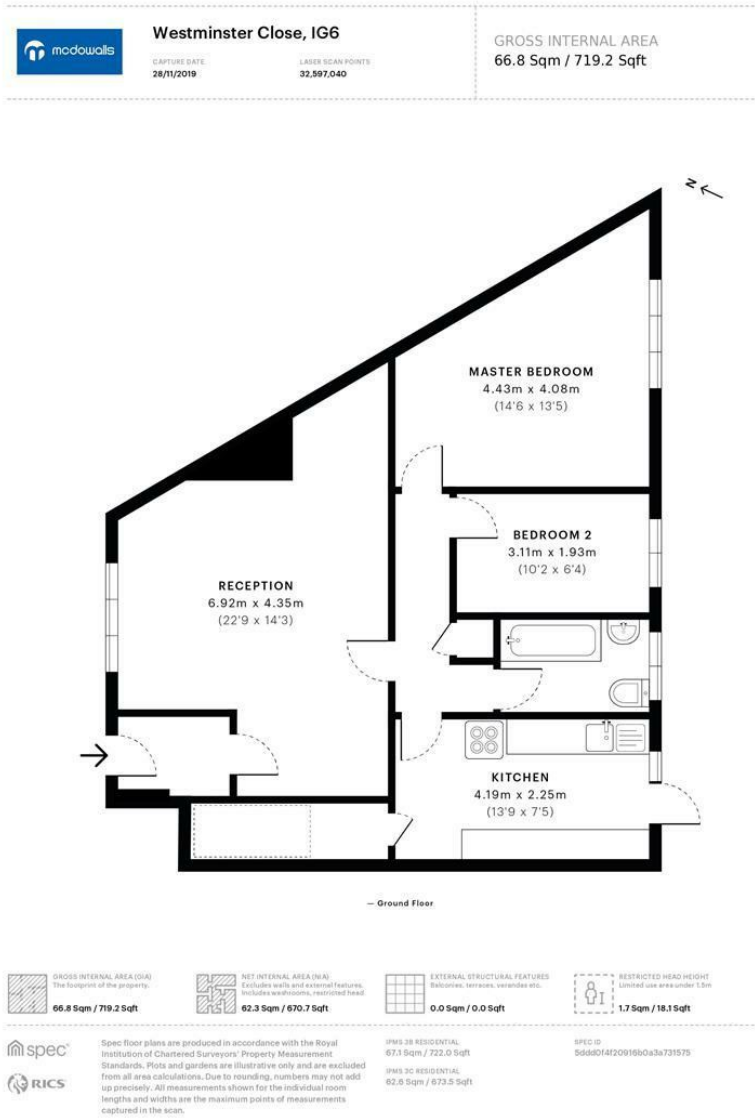
12a Westminster Close, Ilford, IG6 1PQ

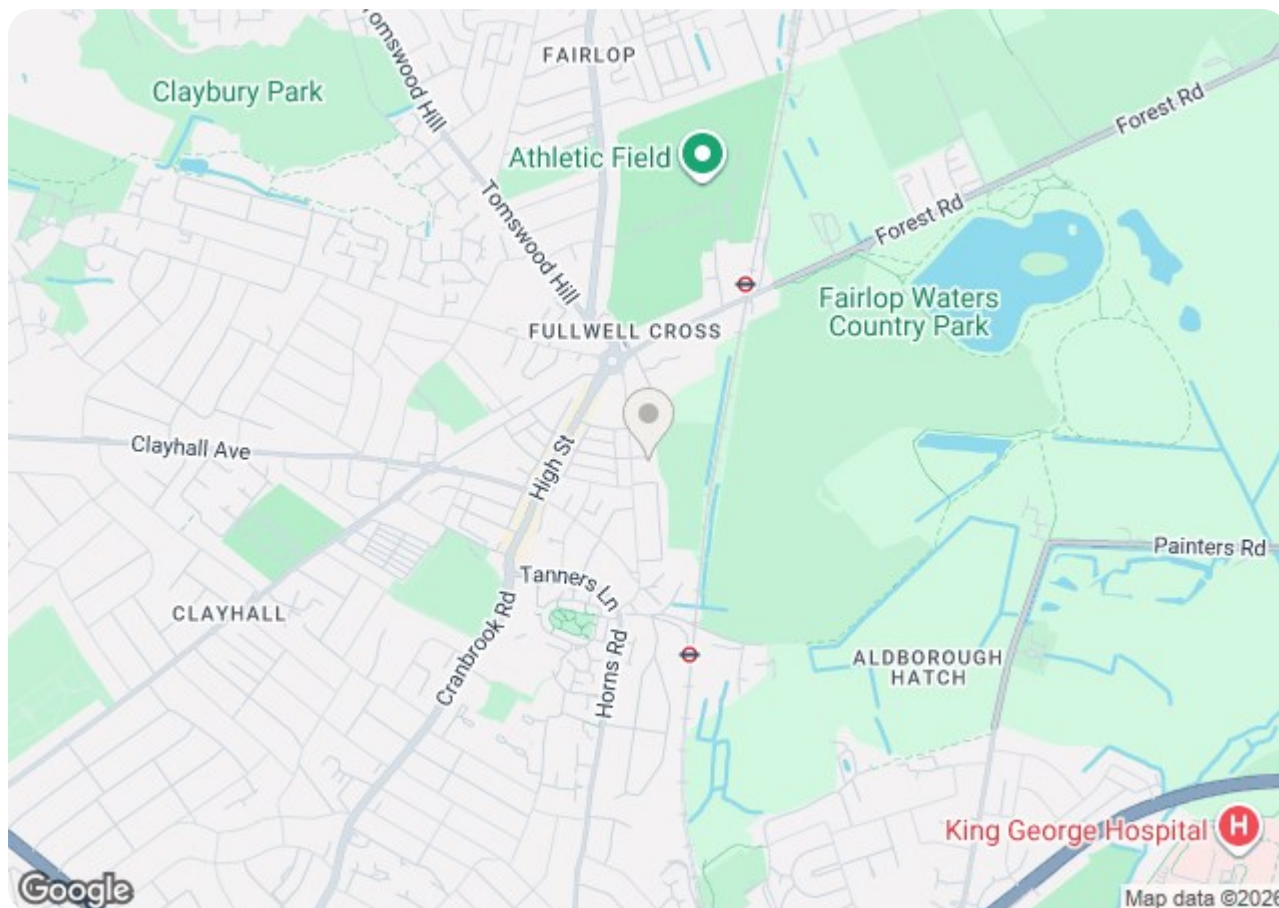
McDowalls are pleased to offer to let this two bedroom house located in a quiet close. The property features one double and one single bedroom. A fully fitted kitchen. The property is a short walk to Barkingside central line station. Close to local amenities.


The property is licensed by Redbridge Council and is only permitted for 2 people

VIEWINGS HIGHLY RECOMMENDED

Council Tax - Band C (£1650 pa)
EPC - Level C





Energy Efficiency Rating		
	Current	Potential
Very energy efficient - lower running costs		
(92 plus) A		
(81-91) B		
(69-80) C		
(55-68) D		
(39-54) E		
(21-38) F		
(1-20) G		
Not energy efficient - higher running costs		
	71	77
England & Wales	EU Directive 2002/91/EC	

Environmental Impact (CO ₂) Rating		
	Current	Potential
Very environmentally friendly - lower CO ₂ emissions		
(92 plus) A		
(81-91) B		
(69-80) C		
(55-68) D		
(39-54) E		
(21-38) F		
(1-20) G		
Not environmentally friendly - higher CO ₂ emissions		
	70	79
England & Wales	EU Directive 2002/91/EC	