



Centric Close, NW1

£800,000

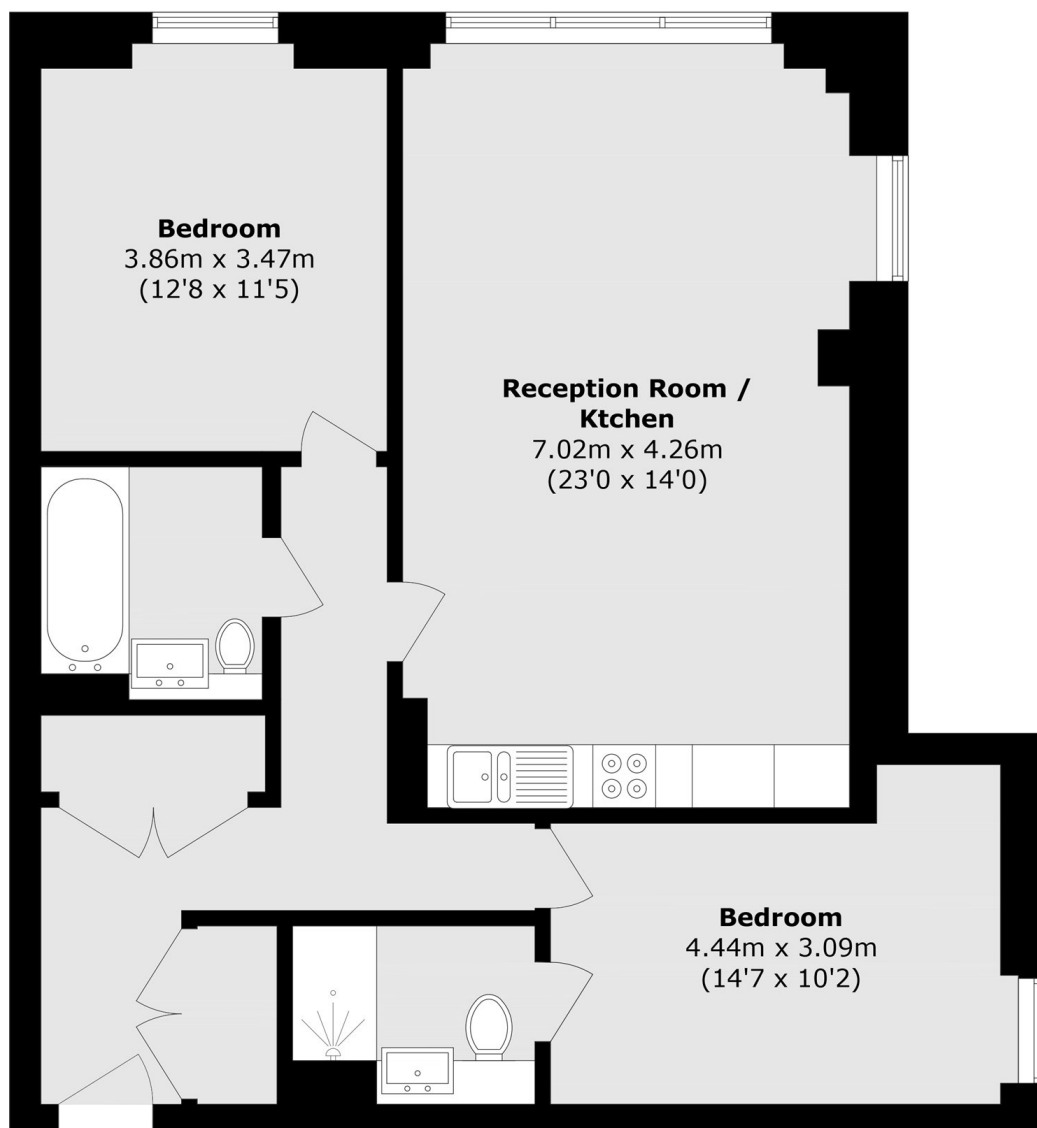
Set within this new build development is this stunning two bedroom, two bathroom fourth floor apartment with great views. The apartment has an open plan kitchen / reception room, air conditioning throughout and the flat has access to a communal roof garden.

Centric Close is within half a mile of Camden Town (Northern line) and Camden Road (Overground) stations, and the green open spaces of Regents Park are less than a 10 minute walk away.

Features

- Two Bedrooms
- Two Bathrooms
- AC Throughout
- Gated Development
- Chain Free
- Communal Roof Garden

Centric Close, London, NW1



Total area (approx.): 85.0 sq. m (914.9 sq. ft)