

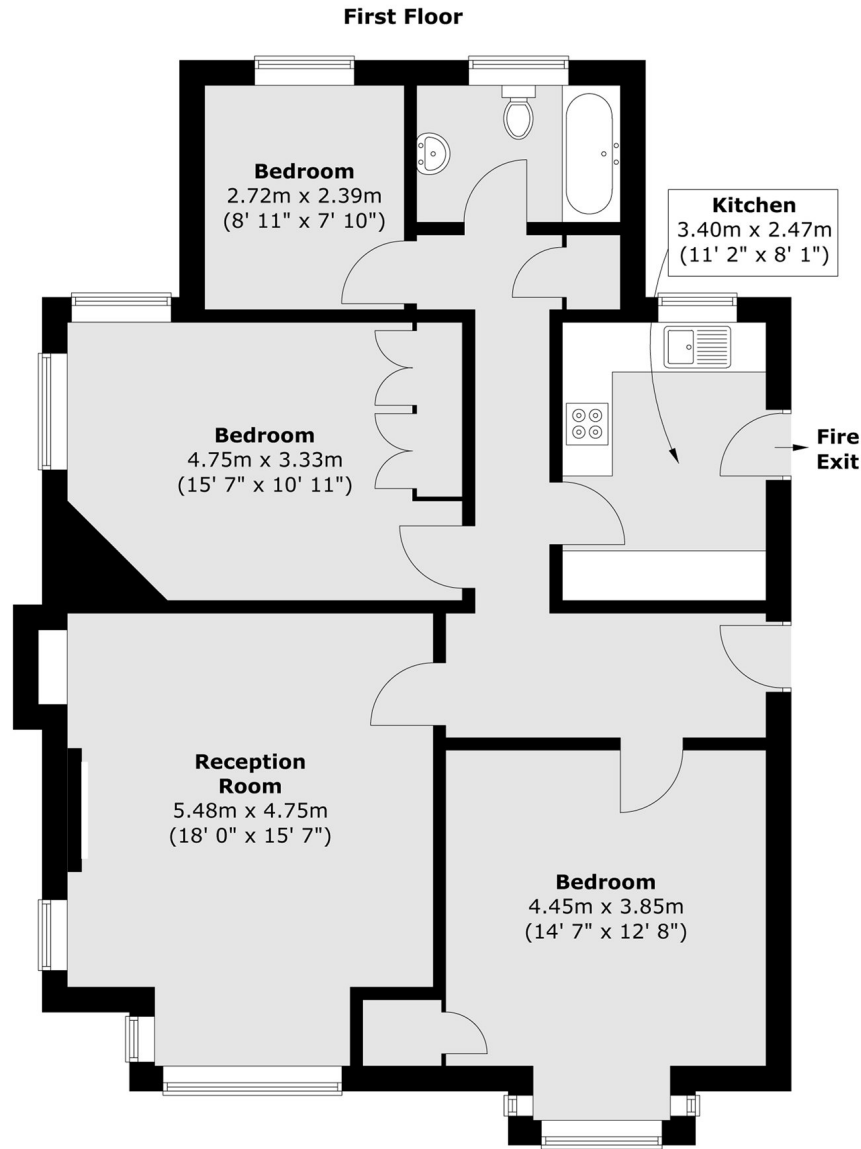


Monks Drive, W3

£635,000

A spacious three bedroom first floor flat located in the popular Hanger Hill Gardens conservation area. The property comes with 970 sq.ft of accommodation, access to well-maintained communal gardens and is offered with no onward chain.

Located in a quiet residential area, within a quarter of a mile of both North Ealing (Piccadilly) and West Acton (Central Line) stations and under a mile from Ealing Broadway (Elizabeth Line).



Total area (approx.) : 90.1 sq. m (970 sq. ft)

Robertson Smith & Kempson Acton Sales
137 High Street, Acton,
London, W3 6LY
020 8896 3996
actonsales@robertsonsmithandkempson.co.uk

Energy Rating: C. We aim to make our particulars both accurate and reliable. However they are not guaranteed; nor do they form part of an offer or contract. If you require clarification on any points then please contact us, especially if you're traveling some distance to view. Please note that appliances and heating systems have not been tested and therefore no warranties can be given as to their good working order.